

LONDON, KENTUCKY

AL-720 (FAA)

25163

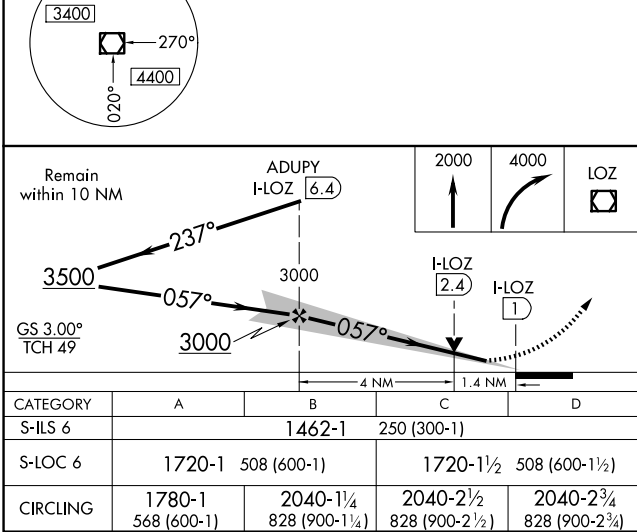
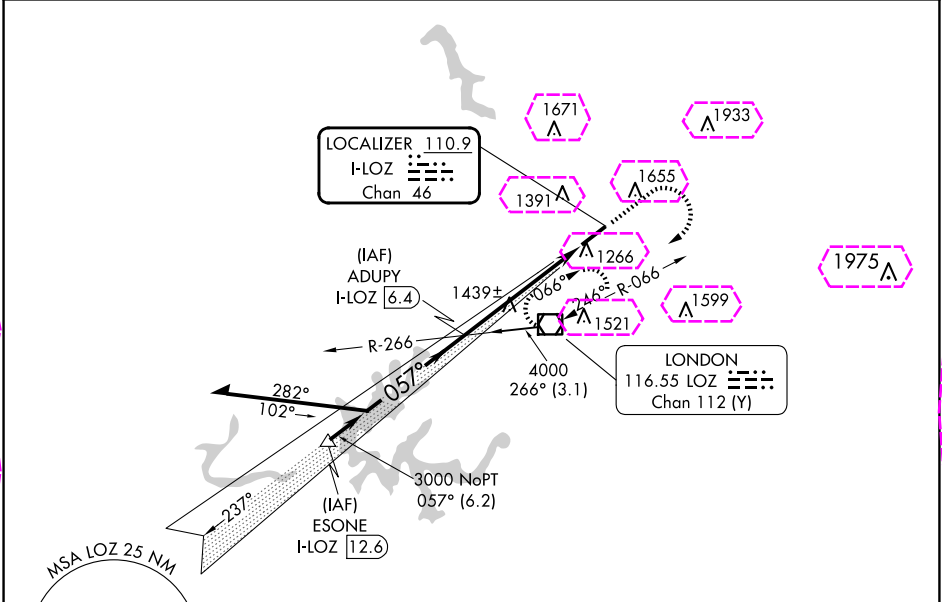
LOC/DME I-LOZ	APP CRS	Rwy Ldg	5000
110.9	057°	TDZE	1212
Chan 46		Apt Elev	1212

ILS or LOC RWY 6
LONDON/CORBIN/MAGEE (LOZ)

⚠ Visibility reduction by helicopters NA. VDP NA when using Somerset altimeter setting. When local altimeter setting not received, use Somerset altimeter setting: increase DA to 1562 feet and all visibility ¼ SM; increase all MDAs 100 feet and S-LOC 6 Cat C ¼ SM, Cat D ½ SM, Circling Cat C/D ¼ SM.

MISSED APPROACH: Climb to 2000 then climbing right turn to 4000 direct LOZ VOR/DME and hold, continue climb-in-hold to 4000.

ASOS 119.075	INDIANAPOLIS CENTER 124.625 371.925	UNICOM 123.0 (CTAF) 1
-----------------	--	--------------------------



ELEV 1212	TDZE 1212
MIRL Rwy 6-24 1	
REIL Rws 6 and 24 1	
FAF to MAP 5.4 NM	
Knots	60 90 120 150 180
Min:Sec	5:24 3:36 2:42 2:10 1:48

LONDON, KENTUCKY
Amdt 1C 20MAY21

37°05'N-84°05'W

LONDON/CORBIN/MAGEE (LOZ)
ILS or LOC RWY 6

LONDON, KENTUCKY

AL-720 (FAA)

25219

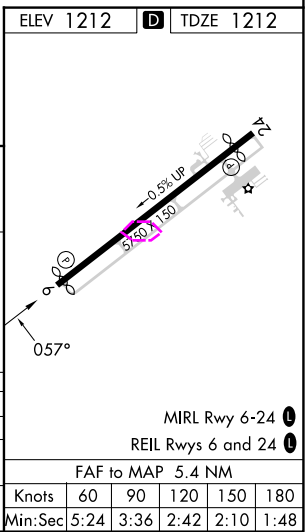
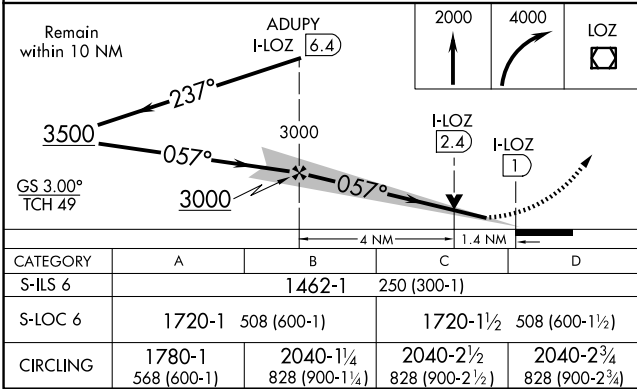
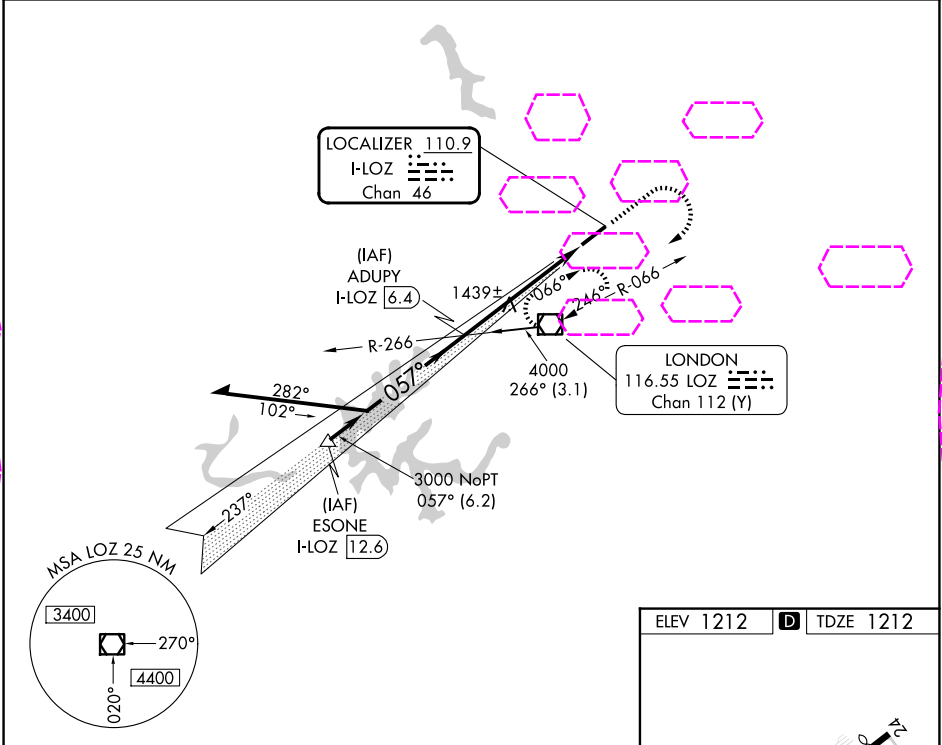
LOC/DME I-LOZ	APP CRS	Rwy Ldg	5000
110.9	057°	TDZE	1212
Chan 46		Apt Elev	1212

ILS or LOC RWY 6
LONDON/CORBIN/MAGEE (LOZ)

⚠ Visibility reduction by helicopters NA. VDP NA when using Somerset altimeter setting. When local altimeter setting not received, use Somerset altimeter setting: increase DA to 1562 feet and all visibility ¼ SM; increase all MDAs 100 feet and S-LOC 6 Cat C ¼ SM, Cat D ½ SM, Circling Cat C/D ¼ SM.

MISSED APPROACH: Climb to 2000 then climbing right turn to 4000 direct LOZ VOR/DME and hold, continue climb-in-hold to 4000.

ASOS 119.075	INDIANAPOLIS CENTER 124.625 371.925	UNICOM 123.0 (CTAF) 1
-----------------	--	--------------------------



LONDON, KENTUCKY
Amdt 1C 20MAY21

37°05'N-84°05'W

LONDON/CORBIN/MAGEE (LOZ)
ILS or LOC RWY 6

SE-1, 07 AUG 2025 to 04 SEP 2025

SE-1, 07 AUG 2025 to 04 SEP 2025