

CHAMPAIGN/URBANA, ILLINOIS

AL-709 (FAA)

24249

VORTAC CMI	APP CRS	Rwy Idg	6502
115.75	207°	TDZE	750
Chan 104 (Y)		Apt Elev	755

VOR RWY 22

UNIVERSITY OF ILLINOIS/WILLARD (CMI)

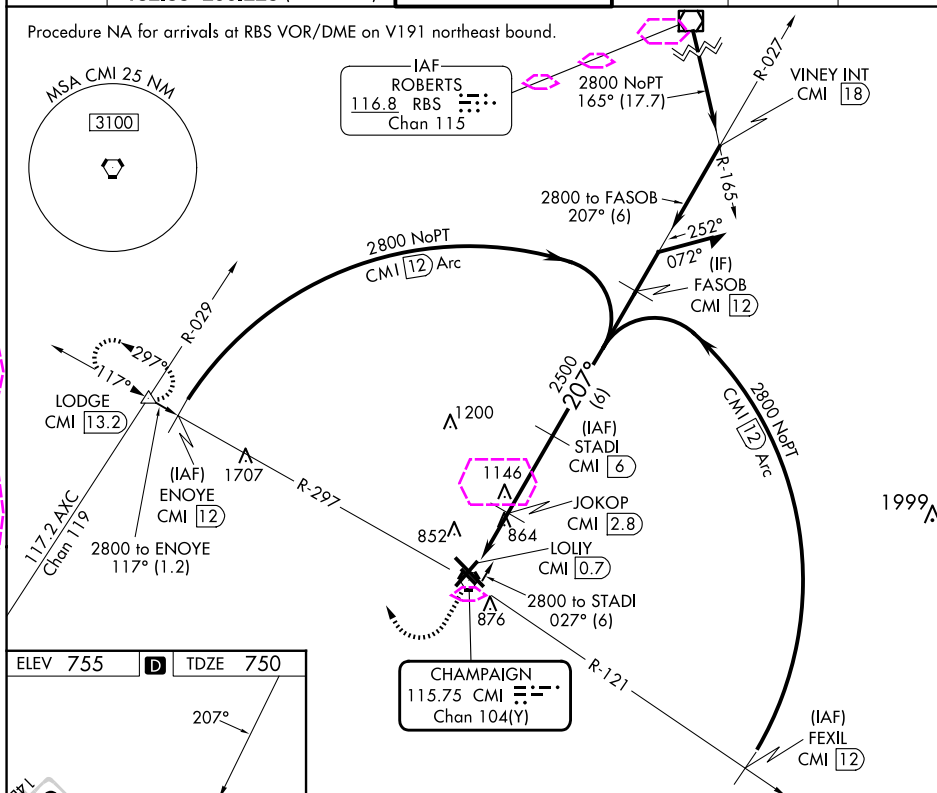
DME required.

⚠ Rwy 22 helicopter visibility reduction below $\frac{3}{4}$ SM NA.
ASR

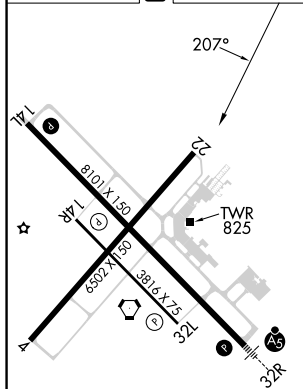
MISSED APPROACH: Climb to 2800 then right turn on heading 340° and on CMI VORTAC R-297 to LODGE INT/CMI 13.2 DME and hold.

ATIS	CHAMPAIGN APP CON *	CHAMPAIGN TOWER *	GND CON	CLNC DEL	UNICOM
124.85	121.35 285.65 (319°-138°) 132.85 290.225 (139°-318°)	120.4 (CTAF) 229.4	121.8	128.75	122.95

Procedure NA for arrivals at RBS VOR/DME on V191 northeast bound.



ELEV 755	D	TDZE 750
----------	---	----------



HIRL Rwy 14L-32R
MIRL Rwy 4-22
MIRL Rwy 14R-32L

2800	hdg 340°	CMI R-297	LODGE	STADI CMI 6	Remain within 10 NM
				027°	2800
				207°	2500
				1460	≤ 3.04° TCH 41
				1 NM	1.1
				3.2 NM	
CATEGORY	A	B	C	D	
S-22	1120-1	370 (400-1)	1120-1¼	370 (400-1¼)	
CIRCLING	1240-1	485 (500-1)	1500-2¼	1500-2½	
			745 (800-2¼)	745 (800-2½)	

CHAMPAIGN/URBANA, ILLINOIS

Amdt 8B 25JAN24

UNIVERSITY OF ILLINOIS/WILLARD (CMI)

40°02'N-88°17'W

VOR RWY 22

EC-3, 10 JUL 2025 to 07 AUG 2025

EC-3, 10 JUL 2025 to 07 AUG 2025

CHAMPAIGN/URBANA, ILLINOIS

AL-709 (FAA)

25219

VORTAC CMI	APP CRS	Rwy Ldg	6502
115.75	207°	TDZE	750
Chan 104 (Y)		Apt Elev	755

VOR RWY 22

UNIVERSITY OF ILLINOIS/WILLARD (CMI)

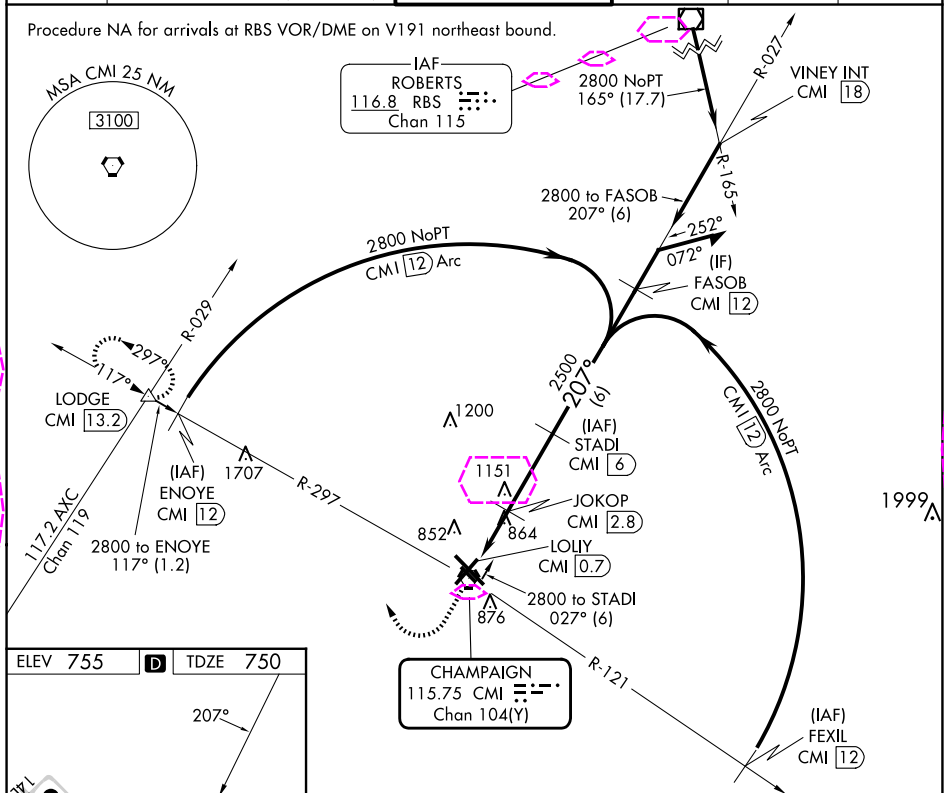
DME required.

Rwy 22 helicopter visibility reduction below $\frac{3}{4}$ SM NA.
ASR

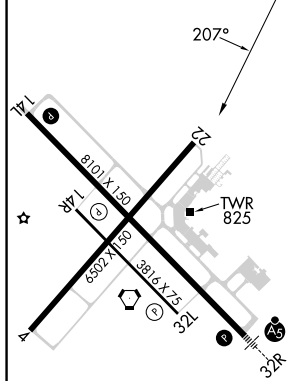
MISSED APPROACH: Climb to 2800 then right turn on heading 340° and on CMI VORTAC R-297 to LODGE INT/CMI 13.2 DME and hold.

ATIS	CHAMPAIGN APP CON *	CHAMPAIGN TOWER *	GND CON	CLNC DEL	UNICOM
124.85	121.35 285.65 (319°-138°) 132.85 290.225 (139°-318°)	120.4 (CTAF) 229.4	121.8	128.75	122.95

Procedure NA for arrivals at RBS VOR/DME on V191 northeast bound.



ELEV 755	D	TDZE 750
----------	---	----------



HIRL Rwy 14L-32R
MIRL Rwy 4-22
MIRL Rwy 14R-32L

2800	hdg 340°	CMI R-297	LODGE CMI	STADI CMI 6	Remain within 10 NM
			JOKOP CMI 2.8		
			LILLY CMI 0.7		
			CMI VORTAC		
			CMI 1.7		
			3.19° TCH 41		
			1500	2500	
			1 NM	1.1 NM	3.2 NM
CATEGORY	A	B	C	D	
S-22		1120-1	370 (400-1)		
CIRCLING	1240-1	485 (500-1)	1500-2¼ 745 (800-2¼)	1500-2½ 745 (800-2½)	

CHAMPAIGN/URBANA, ILLINOIS

Amdt 8C 07AUG25

UNIVERSITY OF ILLINOIS/WILLARD (CMI)

40°02'N-88°17'W

VOR RWY 22

EC-3, 07 AUG 2025 to 04 SEP 2025

EC-3, 07 AUG 2025 to 04 SEP 2025