

FINDLAY, OHIO

AL-702 (FAA)

24137

APP CRS	Rwy Idg	4558
074°	TDZE	810
	Apt Elev	813

RNAV (GPS) RWY 7

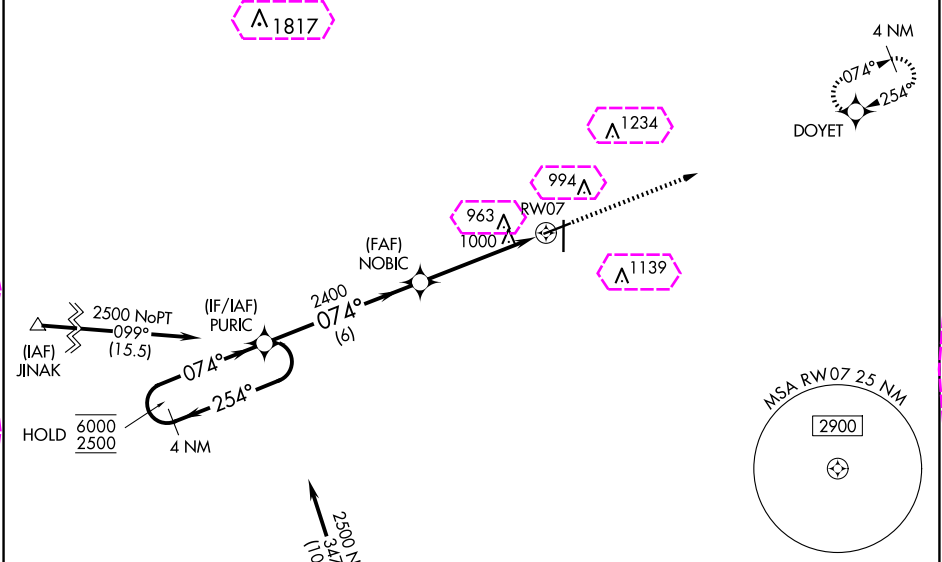
FINDLAY (F'DY)

RNP APCH - GPS.

Baro-VNAV and VDP NA when using Lima Allen County altimeter setting. Rwy 7 helicopter visibility reduction below $\frac{3}{4}$ SM NA. For uncompensated Baro-VNAV systems, LNAV/VNAV NA below -16°C or above 54°C . When local altimeter setting not received, use Lima altimeter setting and increase LNAV/VNAV DA to 1391 feet and all visibilities $\frac{3}{8}$ SM. Increase all MDAs 80 feet and LNAV visibility Cat C/D $\frac{1}{8}$ SM, and Circling visibility Cat C/D $\frac{1}{4}$ SM. Straight-In Rwy 7 NA at night, Circling Rwy 7 NA at night.

MISSED APPROACH:
Climb to 2500 direct
DOYET and hold.

ASOS 132.85	TOLEDO APP CON 120.8 317.55	UNICOM 122.725 (CTAF) 0
----------------	--------------------------------	----------------------------



Procedure NA for arrivals at KINDE on V47 southbound.

VGSI and RNAV glidepath not coincident (VGSI Angle 3.00/ TCH 24)

4 NM Holding Pattern

GP 3.00° TCH 39

CATEGORY	A	B	C	D
LNAV/VNAV DA	1311-1 $\frac{3}{4}$ 501 (500-1 $\frac{3}{4}$)			
LNAV MDA	1260-1	450 (500-1)	1260-1 $\frac{3}{8}$	450 (500-1 $\frac{3}{8}$)
CIRCLING	1440-1	627 (700-1)	1440-1 $\frac{3}{4}$ 627 (700-1 $\frac{3}{4}$)	1540-2 $\frac{1}{4}$ 727 (800-2 $\frac{1}{4}$)

ELEV 813 TDZE 810

DOYET

81

25

5883 X 100

6499 X 100

36

HIRL Rwy 7-25 and 18-36 0

REIL Rwy 7, 25 and 36 0

FINDLAY, OHIO

Orig-C 19MAY22

41°01'N-83°40'W

FINDLAY (F'DY)

RNAV (GPS) RWY 7

FINDLAY, OHIO

AL-702 (FAA)

25219

APP CRS	Rwy Ldg	4558
074°	TDZE	810
	Apt Elev	813

RNAV (GPS) RWY 7

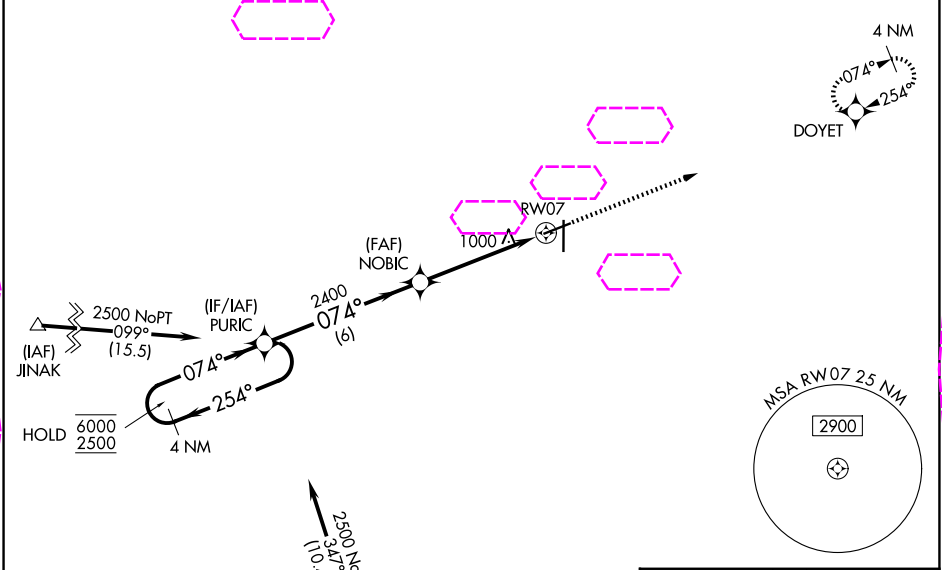
FINDLAY (F'DY)

RNP APCH - GPS.

⚠ Baro-VNAV and VDP NA when using Lima Allen County altimeter setting. Rwy 7 helicopter visibility reduction below $\frac{3}{4}$ SM NA. For uncompensated Baro-VNAV systems, LNAV/VNAV NA below -16°C or above 54°C. When local altimeter setting not received, use Lima altimeter setting and increase LNAV/VNAV DA to 1391 feet and all visibilities $\frac{3}{8}$ SM. Increase all MDAs 80 feet and LNAV visibility Cat C/D $\frac{1}{8}$ SM, and Circling visibility Cat C/D $\frac{1}{4}$ SM. Straight-In Rwy 7 NA at night, Circling Rwy 7 NA at night.

MISSED APPROACH:
Climb to 2500 direct
DOYET and hold.

ASOS 132.85	TOLEDO APP CON 120.8 317.55	UNICOM 122.725 (CTAF) 0
----------------	--------------------------------	----------------------------



ELEV 813 TDZE 810

This section provides a detailed view of the final approach. It shows the glide path starting from the DOYET, passing through the FAF NOBIC, and ending at the runway RW07. Key altitudes and distances are highlighted: 2500, 2400, and 2300. The diagram also shows the 1.4 NM distance to the runway and the 5883 x 100 and 6499 x 100 dimensions of the runway.

CATEGORY	A	B	C	D
LNAV/VNAV DA	1311-1 $\frac{3}{4}$ 501 (500-1 $\frac{3}{4}$)			
LNAV MDA	1260-1	450 (500-1)	1260-1 $\frac{3}{8}$	450 (500-1 $\frac{3}{8}$)
CIRCLING	1440-1	627 (700-1)	1440-1 $\frac{3}{4}$ 627 (700-1 $\frac{3}{4}$)	1540-2 $\frac{1}{4}$ 727 (800-2 $\frac{1}{4}$)

HIRL Rwy 7-25 and 18-36 0

REIL Rwy 7, 25 and 36 0

EC-2, 07 AUG 2025 to 04 SEP 2025

EC-2, 07 AUG 2025 to 04 SEP 2025

FINDLAY, OHIO

Orig-C 19MAY22

41°01'N-83°40'W

RNAV (GPS) RWY 7