

FINDLAY, OHIO

AL-702 (FAA)

24137

WAAS CH 72705 W36A	APP CRS 005°	Rwy Idg TDZE App Elev	6499 809 813
--	------------------------	-----------------------------	---

RNAV (GPS) RWY 36

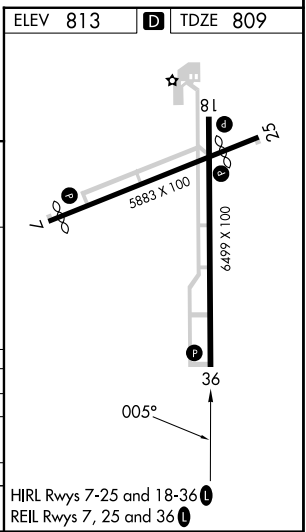
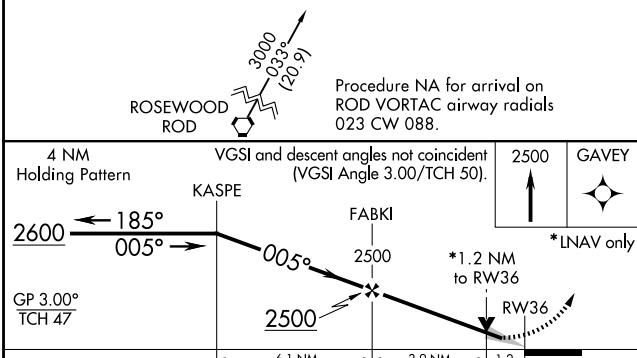
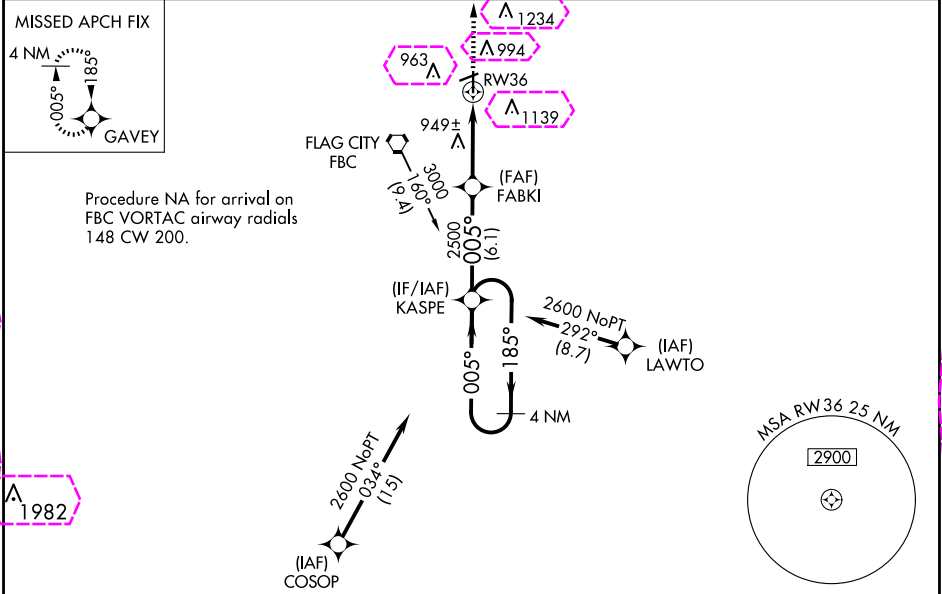
FINDLAY (F'DY)

RNP APCH-GPS.

▼ For uncompensated Baro-VNAV systems, LNAV/VNAV NA below -16°C or above 47°C.
▲ Baro-VNAV and VDP NA when using Lima Allen County altimeter setting.
When local altimeter setting not received, use Lima Allen County altimeter setting: increase all DAs/MDAs 80 feet; increase LNAV Cat C/D visibility $\frac{1}{8}$ SM and Circling Cat C/D visibility $\frac{1}{4}$ SM.
Circling Rwy 7 NA at night.

MISSED APPROACH:
Climb to 2500 direct
GAVEY and hold.

ASOS 132.85	TOLEDO APP CON 120.8 317.55	UNICOM 122.725 (CTAF)
-----------------------	---------------------------------------	---------------------------------



CATEGORY	A	B	C	D
LPV DA	1106-1	297 (300-1)		
LNAV/VNAV DA	1229-1½	420 (500-1½)		
LNAV MDA	1220-1	411 (500-1)	1220-1¼	411 (500-1¼)
CIRCLING	1440-1	627 (700-1)	1440-1¾	1540-2¼
			627 (700-1¾)	727 (800-2¼)

FINDLAY, OHIO
Amdt 1D 19MAY22

41°01'N-83°40'W

RNAV (GPS) RWY 36

FINDLAY, OHIO

AL-702 (FAA)

25219

WAAS CH 72705 W36A	APP CRS 005°	Rwy Ldg TDZE App Elev	6499 809 813
--	------------------------	-----------------------------	---

RNAV (GPS) RWY 36

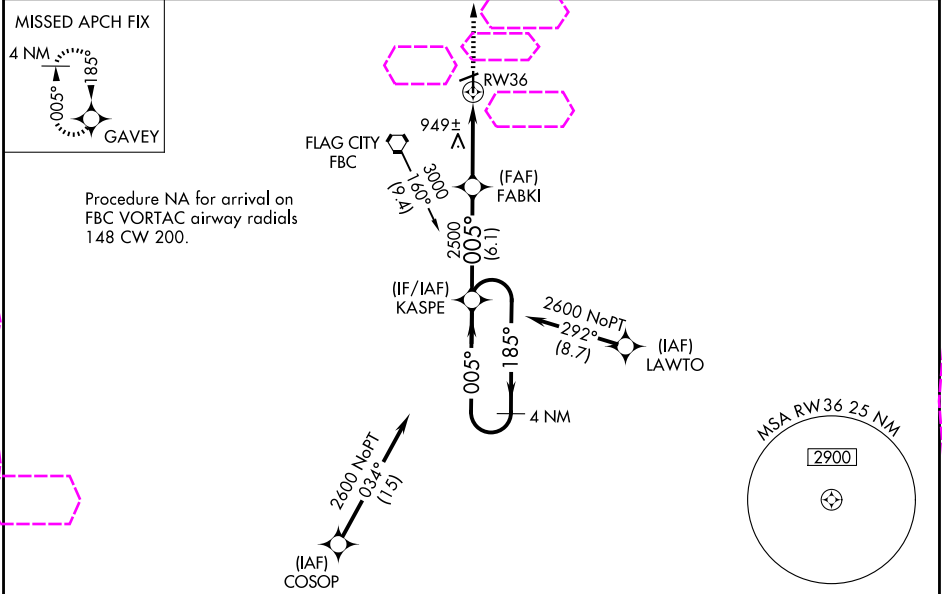
FINDLAY (F'DY)

RNP APCH-GPS.

▼ For uncompensated Baro-VNAV systems, LNAV/VNAV NA below -16°C or above 47°C.
▲ Baro-VNAV and VDP NA when using Lima Allen County altimeter setting.
When local altimeter setting not received, use Lima Allen County altimeter setting: increase all DAs/MDAs 80 feet; increase LNAV Cat C/D visibility $\frac{1}{8}$ SM and Circling Cat C/D visibility $\frac{1}{4}$ SM.
Circling Rwy 7 NA at night.

MISSED APPROACH:
Climb to 2500 direct
GAVEY and hold.

ASOS 132.85	TOLEDO APP CON 120.8 317.55	UNICOM 122.725 (CTAF)
-----------------------	---------------------------------------	---------------------------------



4 NM Holding Pattern

2600 ← 185°
005° →

GP 3.00°
TCH 47

KASPE

FABKI

2500

2500

6.1 NM

3.9 NM

1.2

*LNAV only

*1.2 NM to RW36

RW36

VGSI and descent angles not coincident (VGSI Angle 3.00/TCH 50).

CATEGORY	A	B	C	D
LPV DA	1106-1 297 (300-1)			
LNAV/VNAV DA	1229-1½ 420 (500-1½)			
LNAV MDA	1220-1 411 (500-1)	1220-1¼ 411 (500-1¼)		
CIRCLING	1440-1 627 (700-1)	1440-1¾ 627 (700-1¾)	1540-2¼ 727 (800-2¼)	

ELEV 813 D TDZE 809

HIRL Rwy 7-25 and 18-36
REIL Rwy 7, 25 and 36

EC-2, 07 AUG 2025 to 04 SEP 2025

EC-2, 07 AUG 2025 to 04 SEP 2025

FINDLAY, OHIO

Amdt 1D 19MAY22

41°01'N-83°40'W

RNAV (GPS) RWY 36

FINDLAY (F'DY)