

WAAS CH 56405 W25A	APP CRS 254°	Rwy Idg TDZE Apt Elev	4558 812 813
--	------------------------	-----------------------------	---

RNAV (GPS) RWY 25

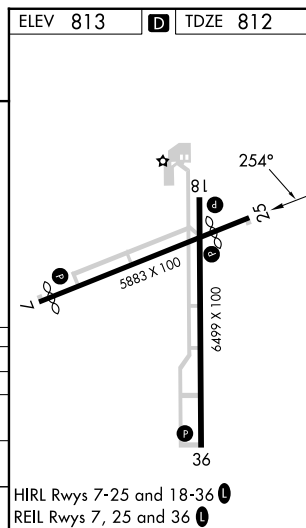
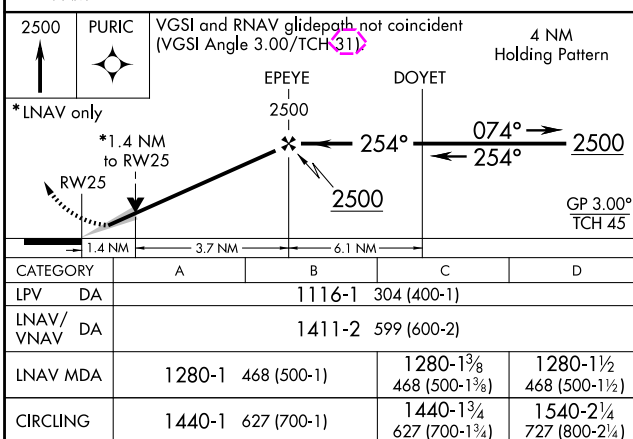
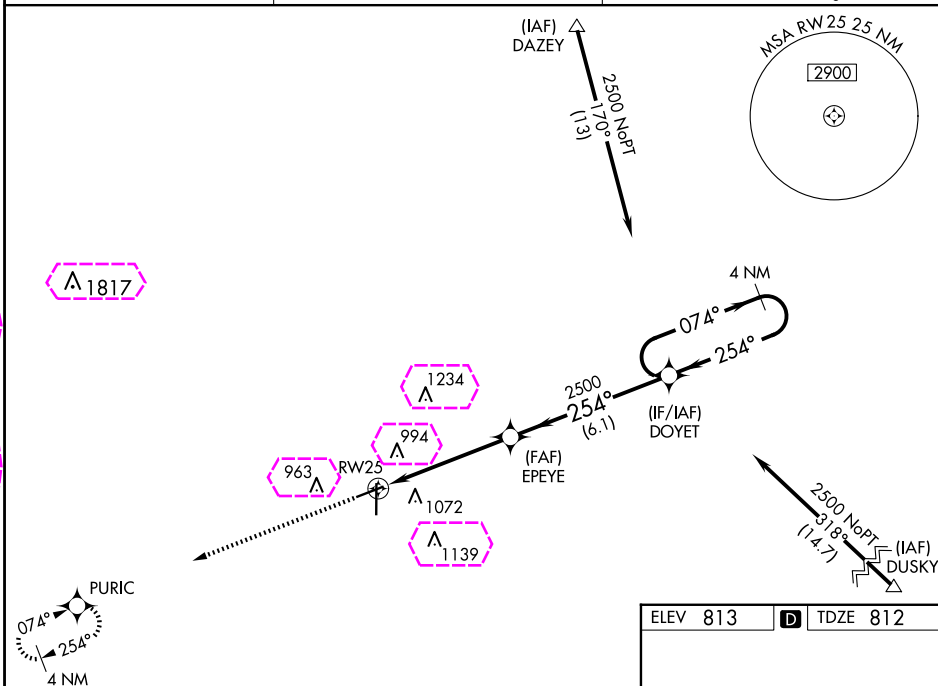
FINDLAY (FDY)

RNP APCH-GPS.

T For uncompensated Baro-VNAV systems, LNAV/VNAV NA below -16°C or above 47°C. Baro-VNAV and VDP NA when using Lima Allen County altimeter setting. When local altimeter setting not received, use Lima Allen County altimeter setting: increase all DAs/MDAs 80 feet; increase LPV visibility ½ SM all Cats; increase LNAV Cat C/D and Circling Cat C/D visibility ¼ SM. Circling Rwy 7 NA at night.

MISSED APPROACH:
Climb to 2500 direct
PURIC and hold.

ASOS 132.85	TOLEDO APP CON 120.8 317.55	UNICOM 122.725 (CTAF) 0
-----------------------	---------------------------------------	-----------------------------------



EC-2, 10 JUL 2025 to 07 AUG 2025

REC-2, 10 JUL 2025 to 07 AUG 2025

WAAS CH 56405 W25A	APP CRS 254°	Rwy Ldg TDZE Apt Elev	4558 812 813
--	------------------------	-----------------------------	---

RNAV (GPS) RWY 25

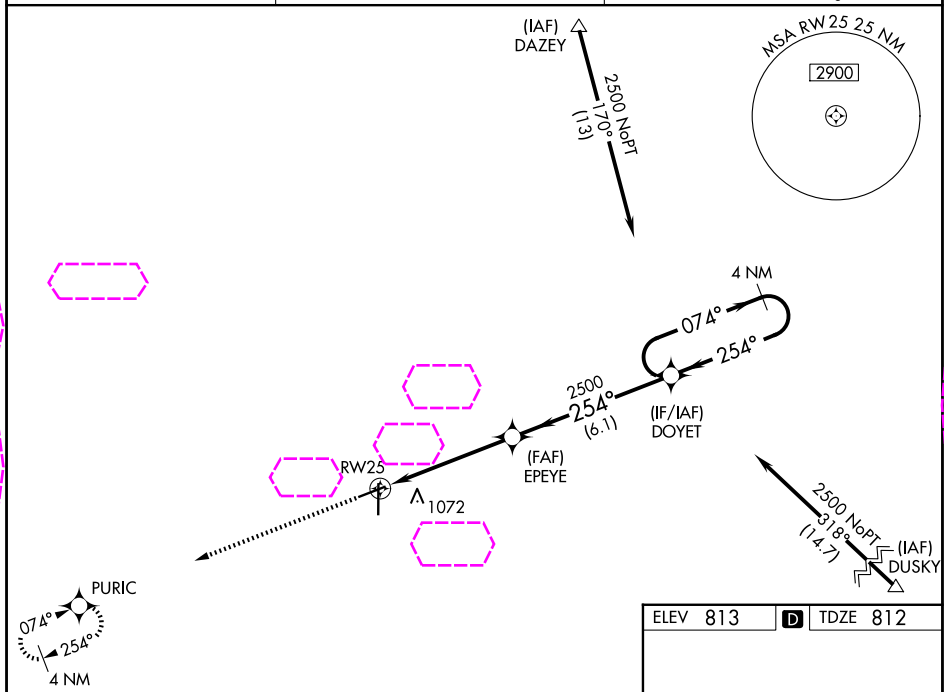
FINDLAY (FDY)

RNP APCH-GPS.

T For uncompensated Baro-VNAV systems, LNAV/VNAV NA below -16°C or above 47°C. Baro-VNAV and VDP NA when using Lima Allen County altimeter setting. When local altimeter setting not received, use Lima Allen County altimeter setting: increase all DAs/MDAs 80 feet; increase LPV visibility ½ SM all Cats; increase LNAV Cat C/D and Circling Cat C/D visibility ¼ SM. Circling Rwy 7 NA at night.

MISSED APPROACH:
Climb to 2500 direct
PURIC and hold.

ASOS 132.85	TOLEDO APP CON 120.8 317.55	UNICOM 122.725 (CTAF) 0
-----------------------	---------------------------------------	-----------------------------------



VGSI and RNAV glidepath not coincident
(VGSI Angle 3.00/TCH 33)

4 NM Holding Pattern

EPEYE 2500 DOYET

*LNAV only

*1.4 NM to RW25

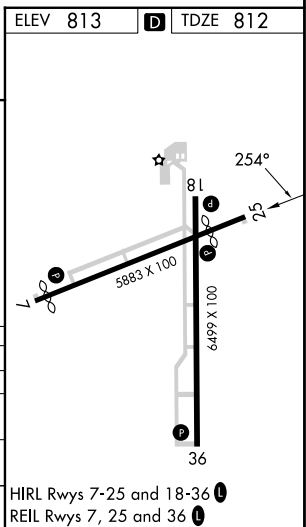
RW25

1.4 NM 3.7 NM 6.1 NM

254° 074° → 2500 ← 254°

GP 3.00°
TCH 45°

CATEGORY	A	B	C	D
LPV DA	1116-1	304 (400-1)		
LNAV/VNAV DA	1411-2	599 (600-2)		
LNAV MDA	1280-1 468 (500-1)	1280-1 ³ / ₈ 468 (500-1 ³ / ₈)	1280-1 ¹ / ₂ 468 (500-1 ¹ / ₂)	
CIRCLING	1440-1 627 (700-1)	1440-1 ³ / ₄ 627 (700-1 ³ / ₄)	1540-2 ¹ / ₄ 727 (800-2 ¹ / ₄)	



EC-2, 07 AUG 2025 to 04 SEP 2025

EC-2, 07 AUG 2025 to 04 SEP 2025.