

REDDING, CALIFORNIA

AL-688 (FAA)

25051

VOR/DME RDD 114.35 Chan 90 (Y)	APP CRS 355°	Rwy Idg 6997 TDZE 499 Apt Elev 505
--	------------------------	---

VOR RWY 34

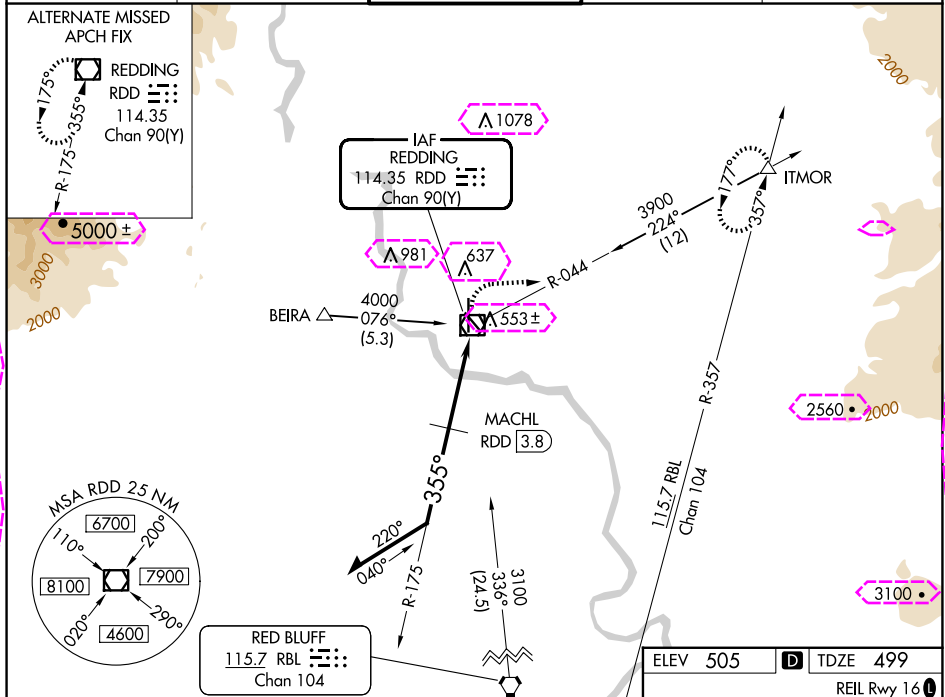
REDDING RGNL (RDD)

⚠ Inop table does not apply to S-34 Cats C/D.
⚠ MACHL fix minimums: for inop ALS, increase S-34 Cat C/D visibility to 1¾ SM.

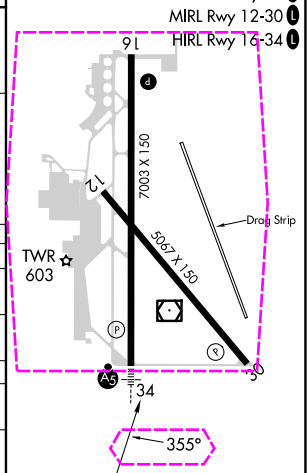
MALSR

MISSED APPROACH: Climb to 2100 then climbing right turn to 5300 on heading 090° and on RDD VOR/DME R-044 to ITMOR INT and hold, continue climb-in-hold to 5300.

ATIS 124.1	OAKLAND CENTER 132.2 350.3	REDDING TOWER ★ 119.8(CTAF) 269.25	GND CON 121.7	UNICOM 122.95
----------------------	--------------------------------------	--	-------------------------	-------------------------



Remain within 10 NM				
CATEGORY	A	B	C	D
S-34	1680-¾ 1181 (1200-¾)	1680-1 1181 (1200-1)	1680-3	1181 (1200-3)
CIRCLING	1680-1¼ 1175 (1200-1¼)	1680-1½ 1175 (1200-1½)	1680-3	1175 (1200-3)
MACHL FIX MINIMUMS				
S-34	1100-½ 601 (600-½)		1100-1⅜ 601 (600-1⅜)	
CIRCLING	1100-1 595 (600-1)		1120-1¾ 615 (700-1¾)	1340-2¾ 835 (900-2¾)



REDDING, CALIFORNIA
Amdt 11 30JAN20

40°31'N-122°18'W

REDDING RGNL (RDD)
VOR RWY 34

SW-2, 10 JUL 2025 to 07 AUG 2025

SW-2, 10 JUL 2025 to 07 AUG 2025

REDDING, CALIFORNIA

AL-688 (FAA)

25219

VOR/DME RDD 114.35 Chan 90 (Y)	APP CRS 355°	Rwy Ldg TDZE 499 Apt Elev 505
--	------------------------	---

VOR RWY 34

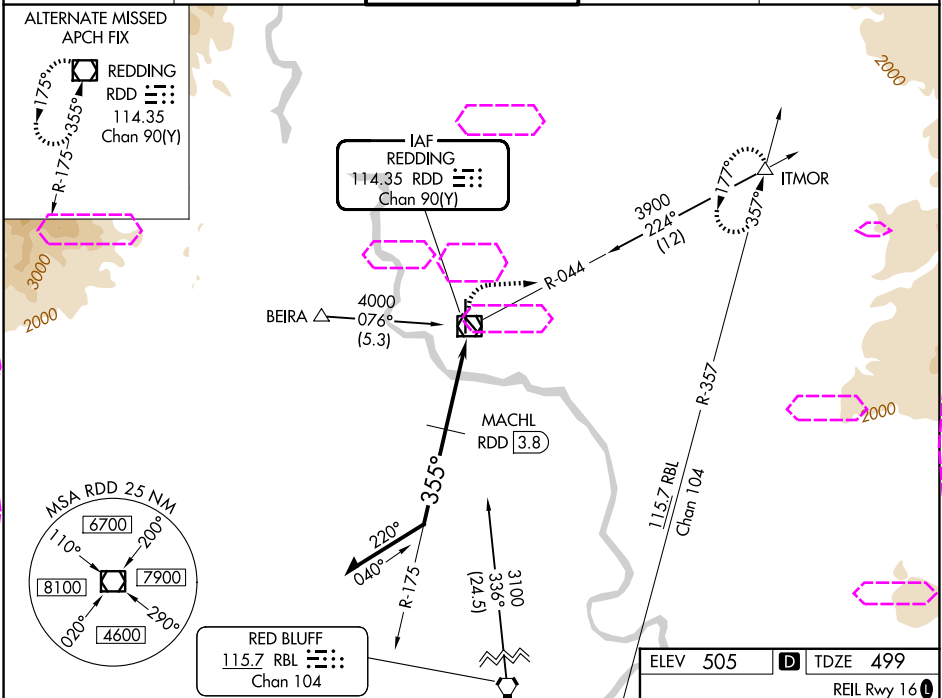
REDDING RGNL (RDD)

⚠ Inop table does not apply to S-34 Cats C/D. MACHL fix minimums: for inop ALS, increase S-34 Cat C/D visibility to 1¾ SM.

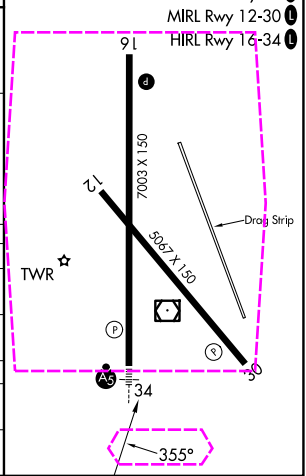
MALSR

MISSED APPROACH: Climb to 2100 then climbing right turn to 5300 on heading 090° and on RDD VOR/DME R-044 to ITMOR INT and hold, continue climb-in-hold to 5300.

ATIS 124.1	OAKLAND CENTER 132.2 350.3	REDDING TOWER ★ 119.8(CTAF) 0 269.25	GND CON 121.7	UNICOM 122.95
----------------------	--------------------------------------	--	-------------------------	-------------------------



Remain within 10 NM				
CIRCLING				
CATEGORY	A	B	C	D
S-34	1680-¾ 1181 (1200-¾)	1680-1 1181 (1200-1)	1680-3	1181 (1200-3)
CIRCLING	1680-1¼ 1175 (1200-1¼)	1680-1½ 1175 (1200-1½)	1680-3	1175 (1200-3)
MACHL FIX MINIMUMS				
S-34	1100-½ 601 (600-½)		1100-1⅜ 601 (600-1⅜)	
CIRCLING	1100-1 595 (600-1)		1120-1¾ 615 (700-1¾)	1340-2¾ 835 (900-2¾)



REDDING, CALIFORNIA
Amdt 11 30JAN20

40°31'N-122°18'W

REDDING RGNL (RDD)
VOR RWY 34

SW-2, 07 AUG 2025 to 04 SEP 2025

SW-2, 07 AUG 2025 to 04 SEP 2025