

REDDING, CALIFORNIA

AL-688 (FAA)

25051

WAAS CH 56402 W34A	APP CRS 346°	Rwy Idg TDZE 499 Apt Elev 505
--	------------------------	---

RNAV (GPS) RWY 34

REDDING RGNL (RDD)

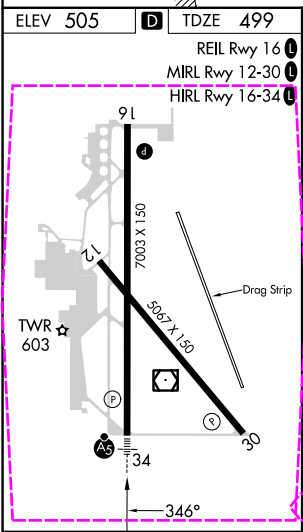
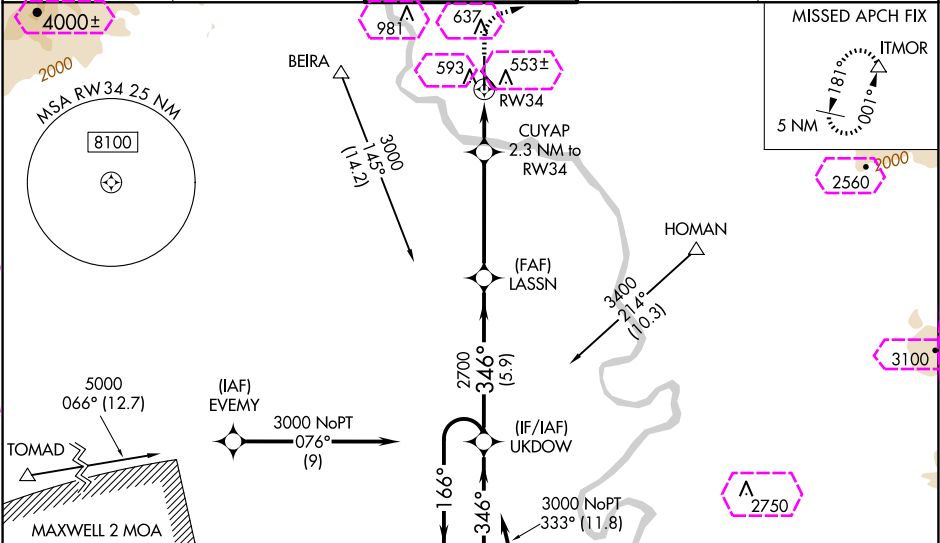
RNP APCH.

⚠ For uncompensated Baro-VNAV systems, LNAV/VNAV NA below -4°C or above 54°C. For inop ALS, increase LNAV/VNAV all Cnts visibility to ¾ SM and LNAV Cat C, D visibility to 1 SM.

MALS R

MISSED APPROACH: Climb to 1700 then climbing right turn to 5000 direct ITMOR, continue climb-in-hold to 5000.

ATIS 124.1	OAKLAND CENTER 132.2 350.3	REDDING TOWER ★ 119.8(CTAF) 0 269.25	GND CON 121.7	UNICOM 122.95
----------------------	--------------------------------------	--	-------------------------	-------------------------



VGSI and RNAV glidepath not coincident (VGSI Angle 3.00/TCH 55).				1700	5000	ITMOR
4 NM Holding Pattern				↑	↷	△
UKDOW				LASSN	CUYAP 2.3 NM to RW34	*LNAV only.
6000 ← 166°				2700	*1 NM to RW34	
3000 → 346°				2700	*1260	
GP 3.00° TCH 52				5.9 NM	4.5 NM	1.3 NM
CATEGORY	A	B	C	D		
LPV DA	699-½		200 (200-½)			
LNAV/VNAV DA	754-½		255 (300-½)			
LNAV MDA	860-½		860-⅝		361 (400-⅝)	
CIRCLING	940-1 435 (500-1)	1000-1 495 (500-1)	1120-1¾ 615 (700-1¾)	1340-2¾ 835 (900-2¾)		

SW-2, 10 JUL 2025 to 07 AUG 2025

SW-2, 10 JUL 2025 to 07 AUG 2025

REDDING, CALIFORNIA

AL-688 (FAA)

25219

WAAS CH 56402 W34A	APP CRS 346°	Rwy Ldg TDZE 499 Apt Elev 505
--	------------------------	---

RNAV (GPS) RWY 34

REDDING RGNL (RDD)

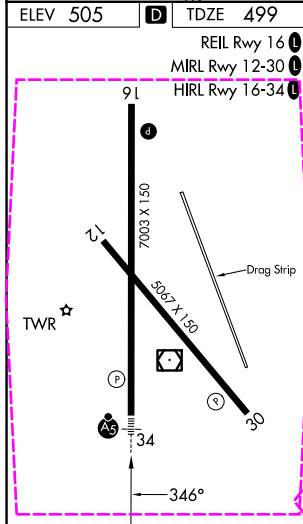
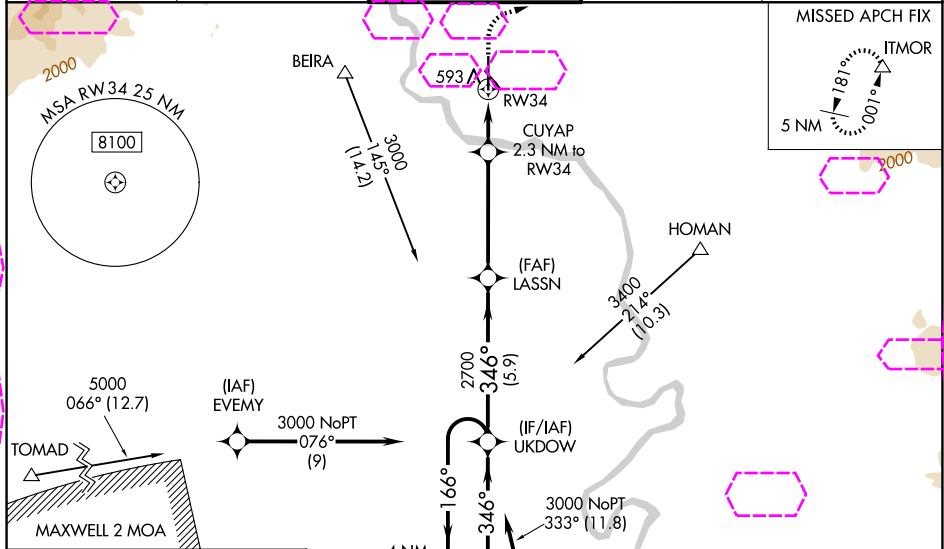
RNP APCH.

⚠ For uncompensated Baro-VNAV systems, LNAV/VNAV NA below -4°C or above 54°C. For inop ALS, increase LNAV/VNAV all Cats visibility to ¾ SM and LNAV Cat C, D visibility to 1 SM.

MALS

⚠ MISSED APPROACH: Climb to 1700 then climbing right turn to 5000 direct ITMOR, continue climb-in-hold to 5000.

ATIS 124.1	OAKLAND CENTER 132.2 350.3	REDDING TOWER ★ 119.8(CTAF) 0 269.25	GND CON 121.7	UNICOM 122.95
----------------------	--------------------------------------	--	-------------------------	-------------------------



VGSI and RNAV glidepath not coincident (VGSI Angle 3.00/TCH 55).				1700	5000	ITMOR
4 NM Holding Pattern				↑	↷	△
UKDOW				*LNAV only.		
6000 ← 166° 3000 → 346°				*1 NM to RW34		
GP 3.00° TCH 52				*1260		
5.9 NM 4.5 NM 1.3 NM 1 NM						
CATEGORY	A	B	C	D		
LPV DA	699-½		200 (200-½)			
LNAV/VNAV DA	754-½		255 (300-½)			
LNAV MDA	860-½ 361 (400-½)		860-⅝ 361 (400-⅝)			
CIRCLING	940-1 435 (500-1)	1000-1 495 (500-1)	1120-1¾ 615 (700-1¾)	1340-2¾ 835 (900-2¾)		

REDDING, CALIFORNIA
Amdt 2 30JAN20

40°31'N-122°18'W

RNAV (GPS) RWY 34