

WAAS CH 86443 W16A	APP CRS 166°	Rwy Idg 6997 TDZE 505 Apt Elev 505
--	------------------------	---

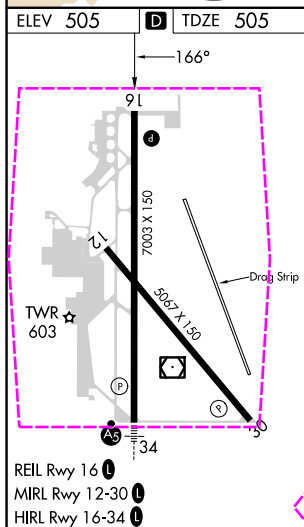
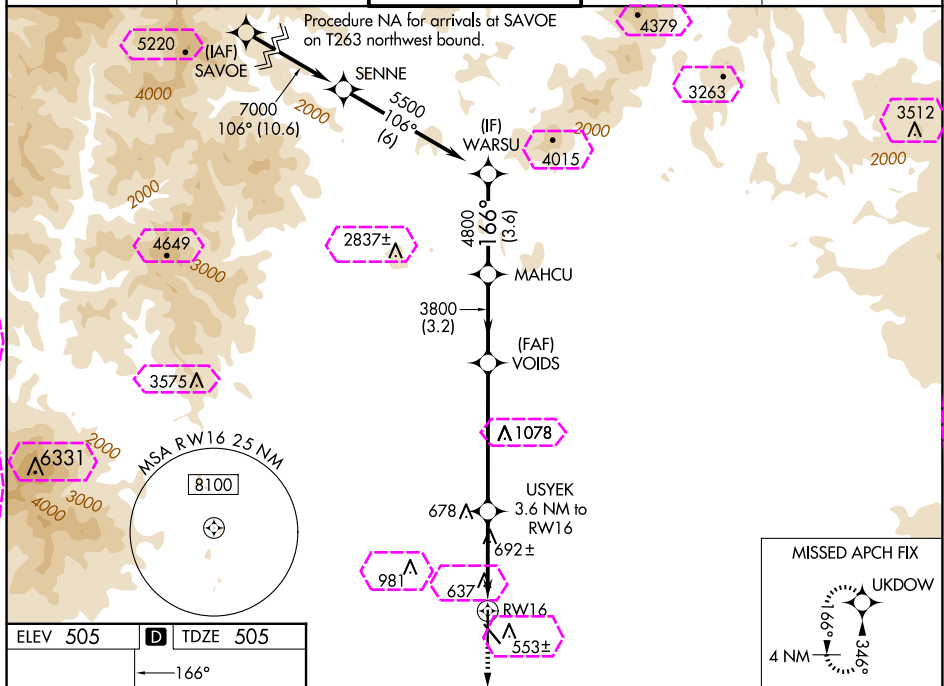
RNAV (GPS) RWY 16
REDDING RGNL (RDD)

RNP APCH.

T	Rwy 16 helicopter visibility reduction below $\frac{3}{4}$ SM NA.
A	For uncompensated Baro-VNAV systems, LNAV/VNAV NA below -4°C or above 53°C.

MISSED APPROACH: Climb to 3000 direct UKDOW and hold.

ATIS 124.1	OAKLAND CENTER 132.2 350.3	REDDING TOWER ★ 119.8 (CTAF) 0 269.25	GND CON 121.7	UNICOM 122.95
----------------------	--------------------------------------	---	-------------------------	-------------------------



CATEGORY	A	B	C	D
LPV DA	755- $\frac{3}{4}$ 250 (300- $\frac{3}{4}$)	775- $\frac{7}{8}$ 270 (300- $\frac{7}{8}$)		
RNAV/VNAV DA	892-1 $\frac{1}{8}$ 387 (400-1 $\frac{1}{8}$)			
RNAV MDA	960-1 455 (500-1)		960-1 $\frac{3}{8}$ 455 (500-1 $\frac{3}{8}$)	

REDDING, CALIFORNIA

AL-688 (FAA)

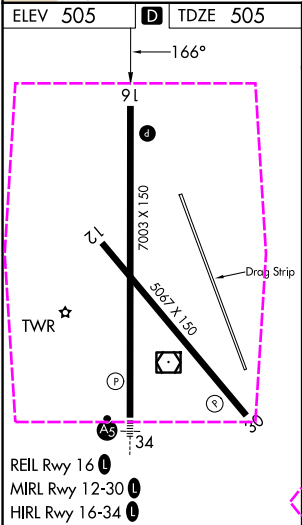
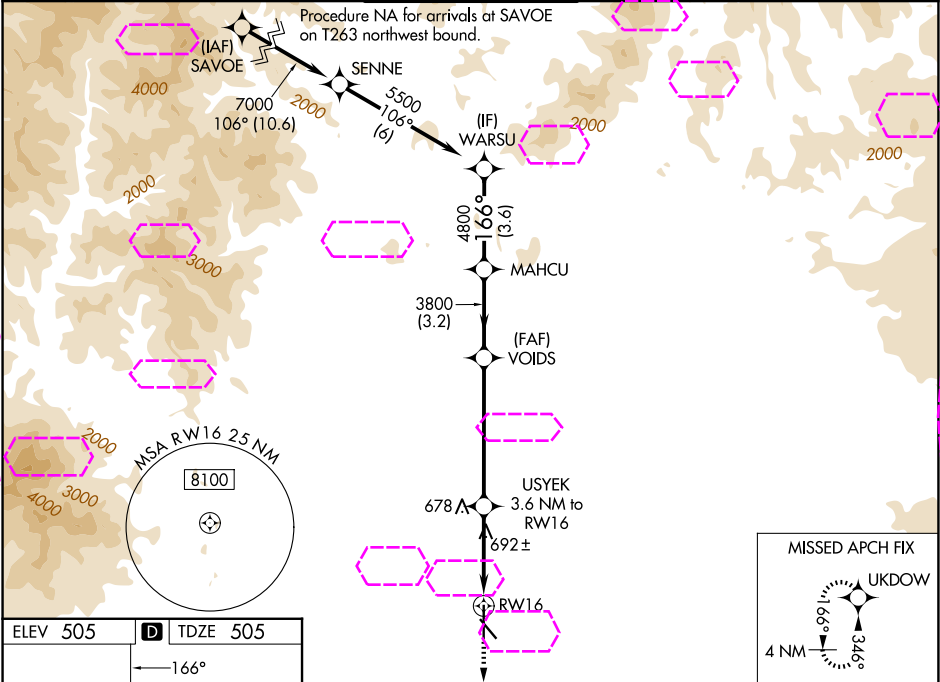
25219

WAAS CH 86443 W16A	APP CRS 166°	Rwy Ldg 7003 TDZE 505 Apt Elev 505
--	------------------------	---

RNAV (GPS) RWY 16
REDDING RGNL (RDD)

RNP APCH. ▼ Rwy 16 helicopter visibility reduction below ¾ SM NA. ▲ For uncompensated Baro-VNAV systems, LNAV/VNAV NA below -4°C or above 53°C.	MISSED APPROACH: Climb to 3000 direct UKDOW and hold.
---	---

ATIS 124.1	OAKLAND CENTER 132.2 350.3	REDDING TOWER ★ 119.8 (CTAF) 0 269.25	GND CON 121.7	UNICOM 122.95
----------------------	--------------------------------------	---	-------------------------	-------------------------



3000 UKDOW	VGSI and RNAV glidepath not coincident (VGSI Angle 3.43/TCH 40).			
*LNAV only.	USYEK 3.6 NM to RW16	VOIDS 3800	MAHCU	WARSU 5500
1.3 NM to RW16	1860	3800	4800	GP 3.43° TCH 55
1.3 NM	2.3 NM	5.3 NM	3.2 NM	3.6 NM
CATEGORY	A	B	C	D
LPV DA	755-¾	250 (300-¾)	775-⅞	270 (300-⅞)
LNAV/VNAV DA	892-1½ 387 (400-1½)			
LNAV MDA	960-1 455 (500-1)	960-1¾ 455 (500-1¾)	960-1¾ 455 (500-1¾)	960-1¾ 455 (500-1¾)
CIRCLING	960-1 455 (500-1)	1000-1 495 (500-1)	1120-1¾ 615 (700-1¾)	1340-2¾ 835 (900-2¾)

REDDING, CALIFORNIA
Orig 30JAN20

40°31'N-122°18'W

REDDING RGNL (RDD)
RNAV (GPS) RWY 16

SW-2, 07 AUG 2025 to 04 SEP 2025

SW-2, 07 AUG 2025 to 04 SEP 2025