

REDDING, CALIFORNIA

AL-688 (FAA)

25051

LOC/DME I-RDD <b>108.7</b> Chan 24	APP CRS <b>166°</b>	Rwy Idg <b>6997</b> TDZE <b>505</b> Apt Elev <b>505</b>
--	------------------------	---

# LOC BC RWY 16

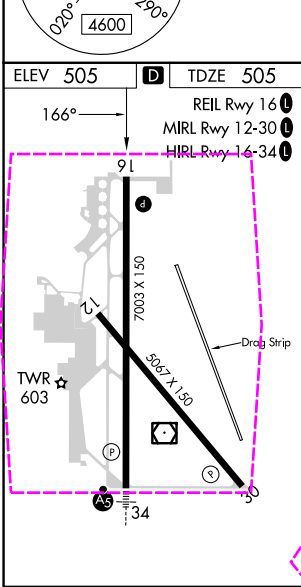
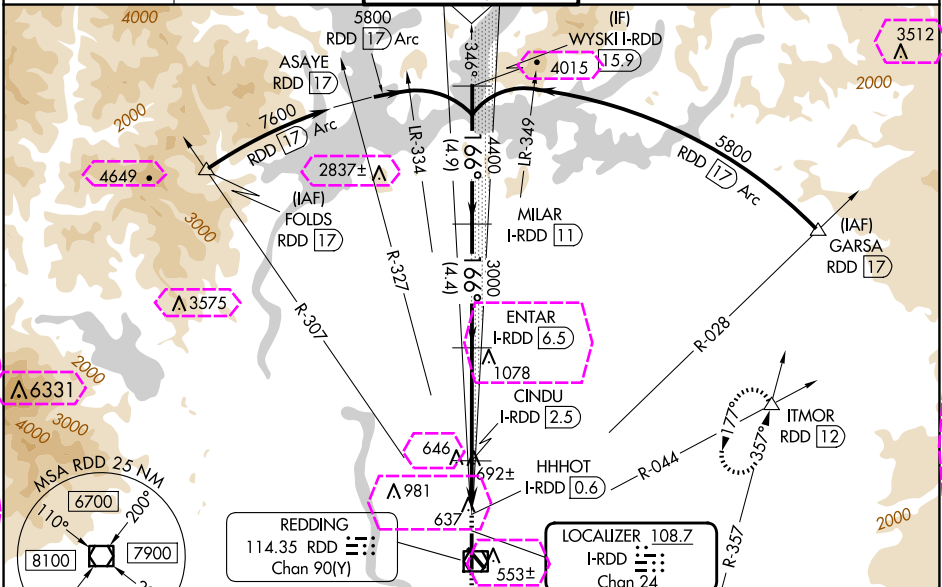
REDDING RGNL (RDD)

DME required.

Rwy 16 helicopter visibility reduction below ¾ SM NA.

MISSED APPROACH: Climb to 2000 then climbing left turn to 5000 on heading 015° and RDD VOR/DME R-044 to ITMOR INT/RDD 12 DME and hold, continue climb-in-hold to 5000.

ATIS <b>124.1</b>	OAKLAND CENTER <b>132.2 350.3</b>	REDDING TOWER ★ <b>119.8(CTAF) 0 269.25</b>	GND CON <b>121.7</b>	UNICOM <b>122.95</b>
----------------------	--------------------------------------	--	-------------------------	-------------------------



REDDING, CALIFORNIA

AL-688 (FAA)

25219

LOC/DME I-RDD <b>108.7</b> Chan 24	APP CRS <b>166°</b>	Rwy Ldg <b>7003</b> TDZE <b>505</b> Apt Elev <b>505</b>
--	------------------------	---

# LOC BC RWY 16

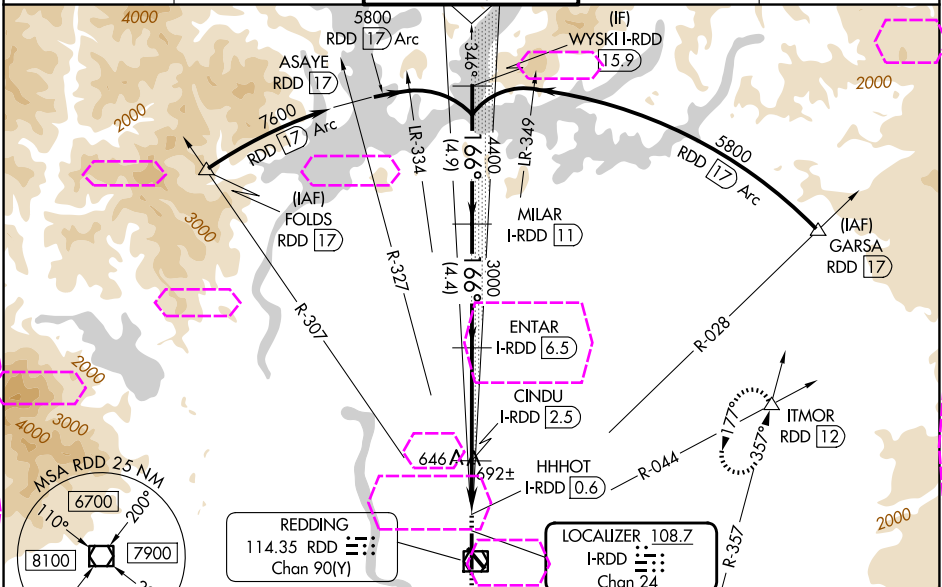
REDDING RGNL (RDD)

DME required.

Rwy 16 helicopter visibility reduction below  $\frac{3}{4}$  SM NA.

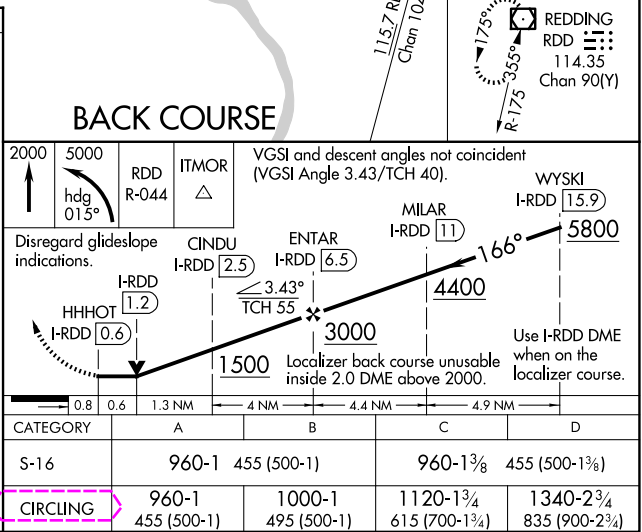
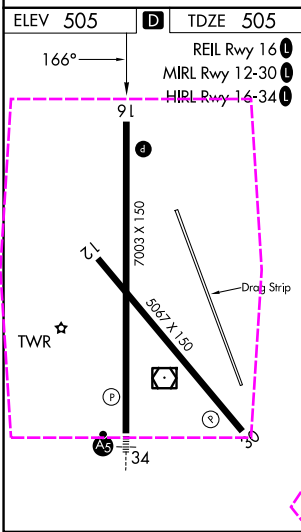
MISSED APPROACH: Climb to 2000 then climbing left turn to 5000 on heading 015° and RDD VOR/DME R-044 to ITMOR INT/RDD 12 DME and hold, continue climb-in-hold to 5000.

ATIS <b>124.1</b>	OAKLAND CENTER <b>132.2 350.3</b>	REDDING TOWER ★ <b>119.8(CTAF) 0 269.25</b>	GND CON <b>121.7</b>	UNICOM <b>122.95</b>
----------------------	--------------------------------------	--	-------------------------	-------------------------



SW-2, 07 AUG 2025 to 04 SEP 2025

SW-2, 07 AUG 2025 to 04 SEP 2025



REDDING, CALIFORNIA  
Amdt 8 30JAN20

40°31'N-122°18'W

REDDING RGNL (RDD)  
**LOC BC RWY 16**