

REDDING, CALIFORNIA

AL-688 (FAA)

25051

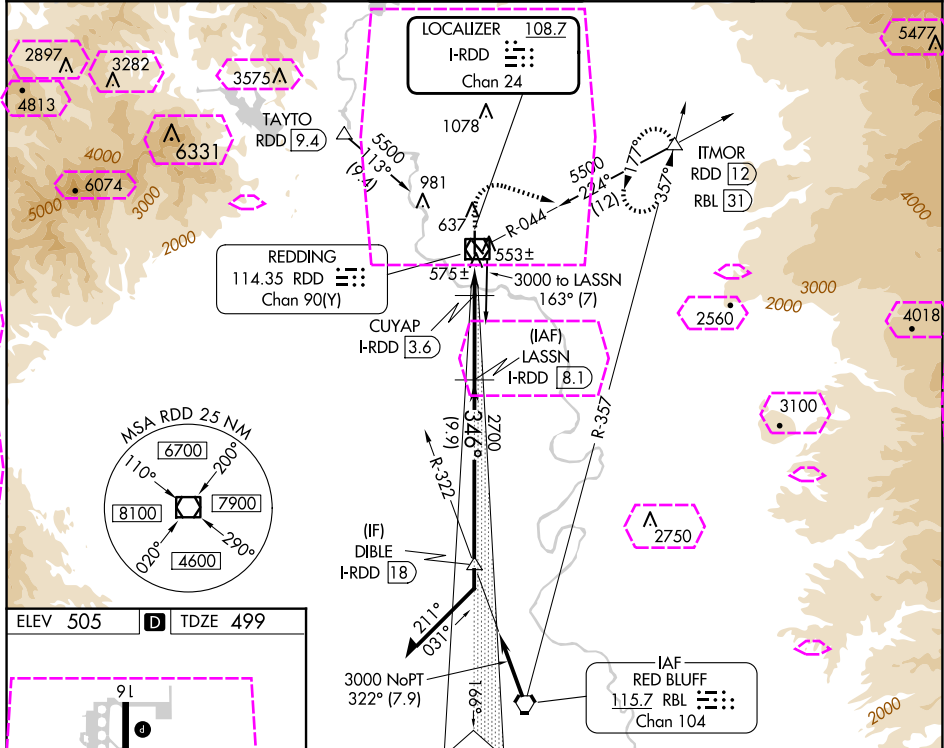
LOC/DME I-RDD 108.7 Chan 24	APP CRS 346°	Rwy Idg 6997 TDZE 499 Apt Elev 505
---	------------------------	---

ILS or LOC RWY 34

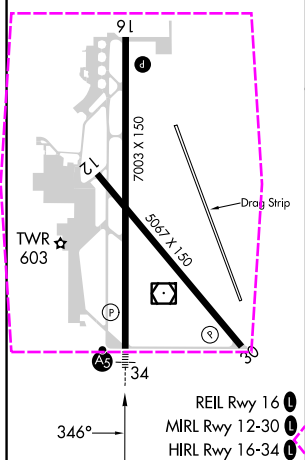
REDDING RGNL (RDD)

DME required for LOC only.	MALSR 	MISSED APPROACH: Climb to 1700 then climbing right turn to 5000 on heading 090° and RDD R-044 to ITMOR INT/RDD 12 DME and hold, continue climb-in-hold to 5000.
 For inop ALS, increase S-ILS 34 Cat E visibility to 3/4 SM and S-LOC 34 Cat C/D/E visibility to 1 SM.		

ATIS 124.1	OAKLAND CENTER 132.2 350.3	REDDING TOWER ★ 119.8(CTAF) 0 269.25	GND CON 121.7	UNICOM 122.95
----------------------	--------------------------------------	--	-------------------------	-------------------------



ELEV 505	D	TDZE 499
-----------------	----------	-----------------



1700	5000	RDD R-044	ITMOR	LASSN I-RDD 8.1	VGSI and ILS glidepath not coincident (VGSI Angle 3.00/TCH 55).
Use I-RDD DME when on the localizer course.					
* LOC only.					
CUYAP I-RDD 3.6	CUYAP I-RDD 1.3	CUYAP I-RDD 3.6	CUYAP I-RDD 1.3	CUYAP I-RDD 3.6	CUYAP I-RDD 1.3
2700	2700	2700	2700	2700	2700
1260*	1260*	1260*	1260*	1260*	1260*
2.3 NM	4.5 NM	9.9 NM			
CATEGORY	A	B	C	D	E
S-ILS 34	699-1/2	200 (200-1/2)			
S-LOC 34	840-1/2	341 (400-1/2)	840-5/8	341 (400-3/8)	
CIRCLING	940-1	1000-1	1120-1 3/4	1340-2 3/4	1340-3
	435 (500-1)	495 (500-1)	615 (700-1 3/4)	835 (900-2 3/4)	835 (900-3)

REDDING, CALIFORNIA
Amdt 12 30JAN20

40°31'N-122°18'W

REDDING RGNL (RDD)
ILS or LOC RWY 34

REDDING, CALIFORNIA


AL-688 (FAA)

25219

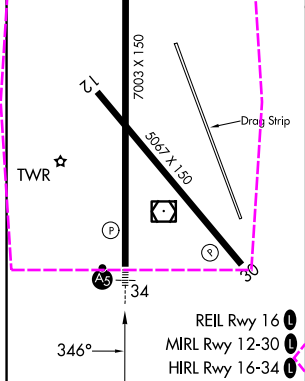
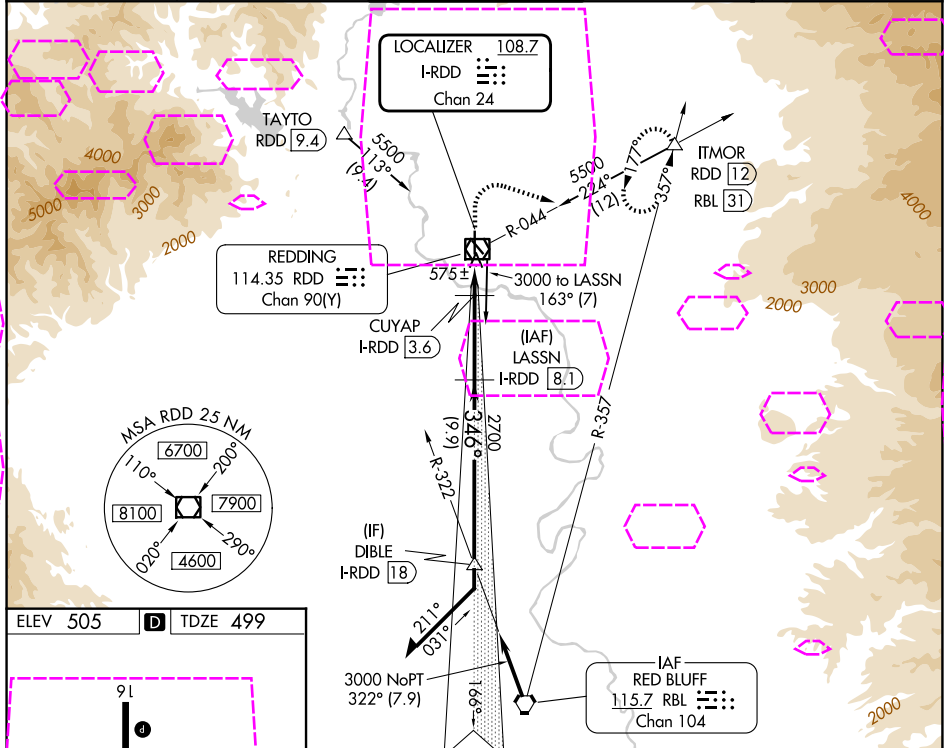
LOC/DME I-RDD 108.7 Chan 24	APP CRS 346°	Rwy Ldg TDZE 499 Apt Elev 505
---	------------------------	---

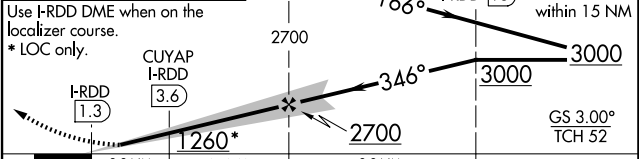
ILS or LOC RWY 34

REDDING RGNL (RDD)

DME required for LOC only.		<div>MALSR</div> <div></div>	MISSED APPROACH: Climb to 1700 then climbing right turn to 5000 on heading 090° and RDD R-044 to ITMOR INT/RDD 12 DME and hold, continue climb-in-hold to 5000.
<div><div><div>▼</div><div>▲</div></div></div> <div>For inop ALS, increase S-ILS 34 Cat E visibility to ¾ SM and S-LOC 34 Cat C/D/E visibility to 1 SM.</div>			

ATIS 124.1	OAKLAND CENTER 132.2 350.3	REDDING TOWER ★ 119.8(CTAF) 0 269.25	GND CON 121.7	UNICOM 122.95
----------------------	--------------------------------------	--	-------------------------	-------------------------



1700	5000	RDD R-044	ITMOR	LASSN I-RDD [8.1]	VGSI and ILS glidepath not coincident (VGSi Angle 3.00/TCH 55).
Use I-RDD DME when on the localizer course. * LOC only.					Remain within 15 NM
					GS 3.00° TCH 52
CATEGORY	A	B	C	D	E
S-ILS 34	699-½ 200 (200-½)				
S-LOC 34	840-½	341 (400-½)	840-⅝	341 (400-⅝)	
CIRCLING	940-1	1000-1	1120-1¾	1340-2¾	1340-3
	435 (500-1)	495 (500-1)	615 (700-1¾)	835 (900-2¾)	835 (900-3)

REDDING, CALIFORNIA
Amdt 12 30JAN20

40°31'N-122°18'W

REDDING RGNL (RDD)
ILS or LOC RWY 34

SW-2, 07 AUG 2025 to 04 SEP 2025

SW-2, 07 AUG 2025 to 04 SEP 2025