

JAMESTOWN, NORTH DAKOTA

AL-685 (FAA)

21168

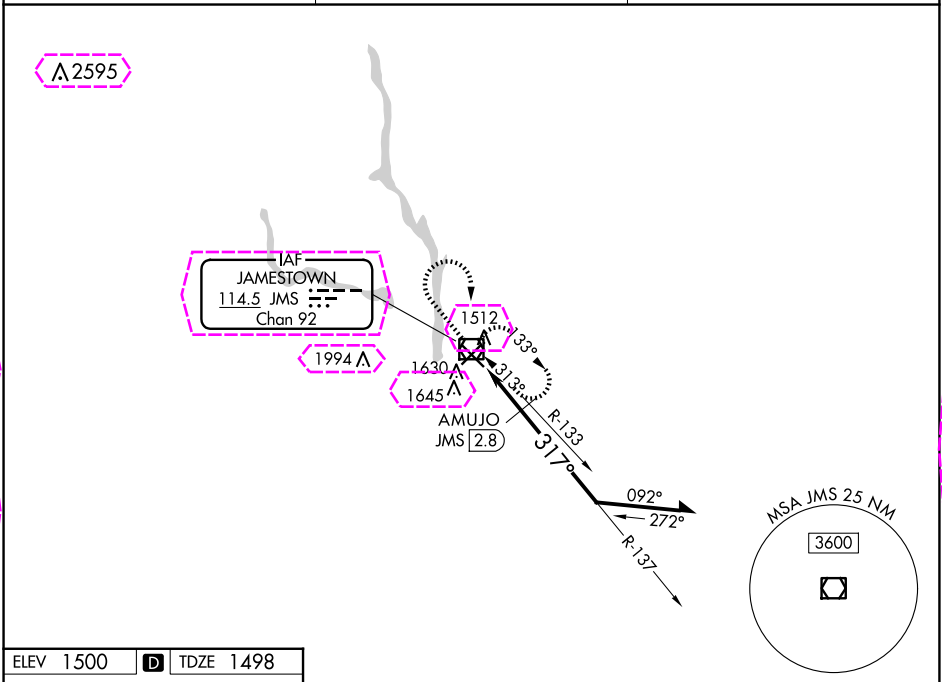
VOR/DME JMS	APP CRS	Rwy Idg	6502
114.5	317°	TDZE	1498
Chan 92		Apt Elev	1500

VOR RWY 31
JAMESTOWN RGNL (JMS)

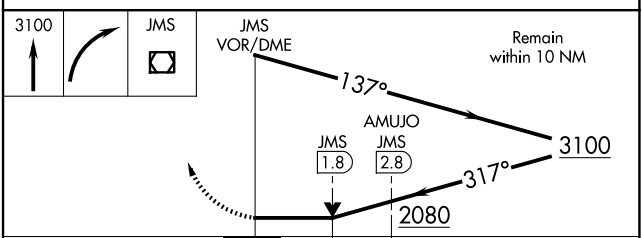
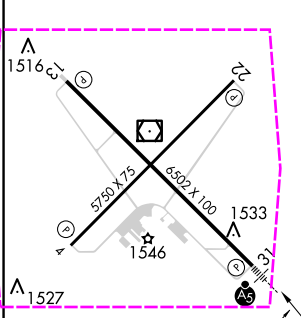
MALSR

MISSED APPROACH: Climb to 3100 then right turn direct JMS VOR/DME and hold.

ASOS 118.425	MINNEAPOLIS CENTER 124.2 270.3	UNICOM 123.0 (CTAF) 0
-----------------	-----------------------------------	--------------------------



ELEV 1500	D	TDZE 1498
-----------	---	-----------



CATEGORY	A	B	C	D
S-31	2080-½	582 (600-½)	2080-1	2080-1¼
			582 (600-1)	582 (600-1¼)
	2080-1	580 (600-1)	2080-1¾	2300-2½
			580 (600-1¾)	800 (800-2½)
AMUJO FIX MINIMUMS				
S-31	1900-½	402 (400-½)	1900-¾	1900-1
			402 (400-¾)	402 (400-1)
	1960-1	460 (500-1)	2000-1½	2300-2½
			500 (500-1½)	800 (800-2½)

JAMESTOWN, NORTH DAKOTA
Amdt 9A 07DEC17

46°56'N-98°41'W

JAMESTOWN RGNL (JMS)
VOR RWY 31

JAMESTOWN RGNL (JMS)
VOR RWY 31

NC-1, 07 AUG 2025 to 04 SEP 2025