

JAMESTOWN, NORTH DAKOTA

AL-685 (FAA)

21168

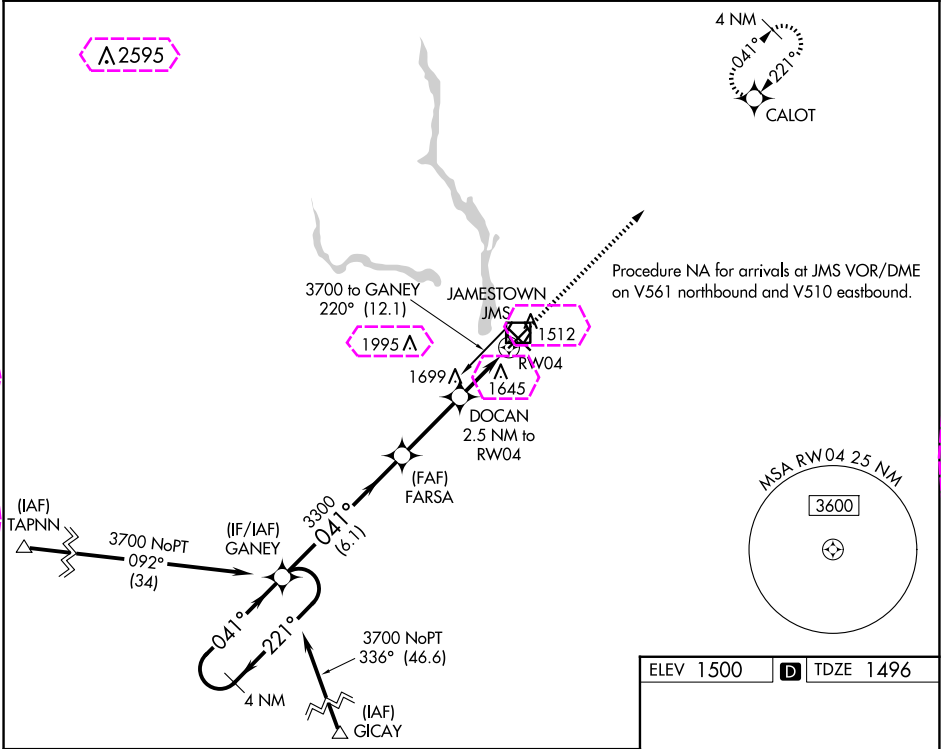
WAAS CH 97505 W04A	APP CRS 041°	Rwy Idg 5750 TDZE 1496 Apt Elev 1500
--	------------------------	---

RNAV (GPS) RWY 4

JAMESTOWN RGNL (JMS)

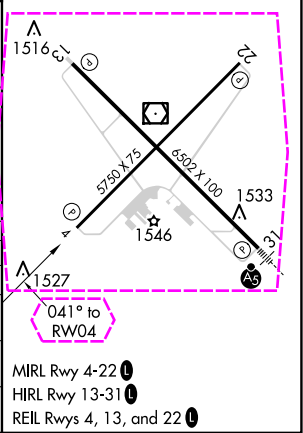
⚠ For uncompensated Baro-VNAV systems, LNAV/VNAV NA below -21°C (-5°F) or above 54°C (130°F). DME/DME RNP-0.3 NA.	MISSED APPROACH: Climb to 3300 direct CALOT and hold.
--	---

ASOS 118.425	MINNEAPOLIS CENTER 124.2 270.3	UNICOM 123.0 (CTAF) 0
------------------------	--	---------------------------------



4 NM Holding Pattern		VGSI and RNAV glidepath not coincident (VGSI Angle 3.00/TCH 22).		3300	CALOT
3700 ← 221° 041° →		GANEY		FARSA	DOCAN 2.5 NM to RW04
GP 3.00° TCH 45		041°		3300	*1.5 NM to RW04
		3300		*2340	RW04
		6.1 NM		2.9 NM	1 NM
				1.5 NM	
CATEGORY	A	B	C	D	
LPV DA	1746-1		250 (300-1)		
LNAV/VNAV DA	1930-1½		434 (500-1½)		
LNAV MDA	2000-1 504 (500-1)		2000-1½ 504 (500-1½)		
C CIRCLING	2000-1 500 (500-1)		2000-1½ 500 (500-1½)		2300-2½ 800 (800-2½)

ELEV 1500	D TDZE 1496
-----------	--------------------



JAMESTOWN, NORTH DAKOTA
Orig-B 07DEC17

46°56'N-98°41'W

JAMESTOWN RGNL (JMS) RNAV (GPS) RWY 4

NC-1, 10 JUL 2025 to 07 AUG 2025

NC-1, 10 JUL 2025 to 07 AUG 2025

JAMESTOWN, NORTH DAKOTA

AL-685 (FAA)

25219

WAAS CH 97505 W04A	APP CRS 041°	Rwy Ldg TDZE 1496 Apt Elev 1500
--	------------------------	---

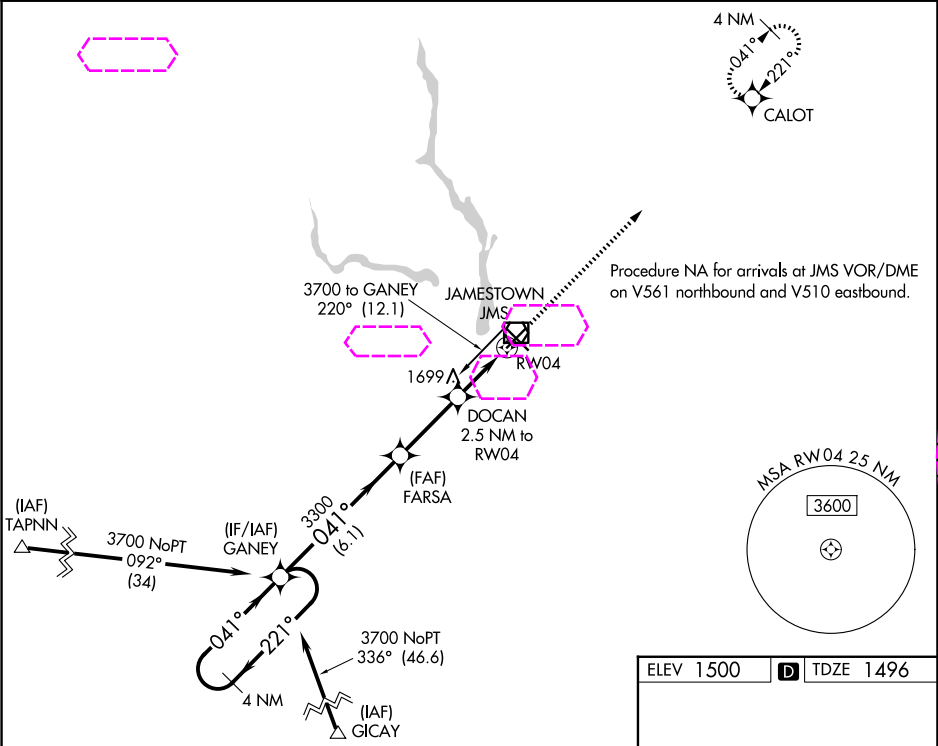
RNAV (GPS) RWY 4

JAMESTOWN RGNL (JMS)

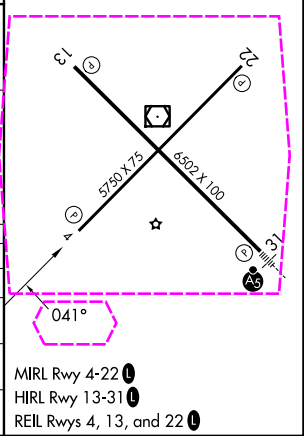
⚠ For uncompensated Baro-VNAV systems, LNAV/VNAV NA below -21°C (-5°F) or above 54°C (130°F). DME/DME RNP-0.3 NA.

MISSED APPROACH: Climb to 3300 direct CALOT and hold.

ASOS 118.425	MINNEAPOLIS CENTER 124.2 270.3	UNICOM 123.0 (CTAF) 0
------------------------	--	---------------------------------



4 NM Holding Pattern		VGSI and RNAV glidepath not coincident (VGSI Angle 3.00/TCH 22).		3300	CALOT
3700		GANEY		FARSA	DOCAN 2.5 NM to RW04
GP 3.00° TCH 45		3300		*2340	
6.1 NM		2.9 NM		1 NM	
1.5 NM		1.5 NM		1.5 NM	
CATEGORY	A	B	C	D	
LPV DA	1746-1		250 (300-1)		
LNAV/VNAV DA	1930-1½		434 (500-1½)		
LNAV MDA	2000-1 504 (500-1)		2000-1½ 504 (500-1½)		
CIRCLING	2000-1 500 (500-1)		2000-1½ 500 (500-1½)		



JAMESTOWN, NORTH DAKOTA
Orig-B 07DEC17

46°56'N-98°41'W

JAMESTOWN RGNL (JMS)
RNAV (GPS) RWY 4

NC-1, 07 AUG 2025 to 04 SEP 2025

NC-1, 07 AUG 2025 to 04 SEP 2025