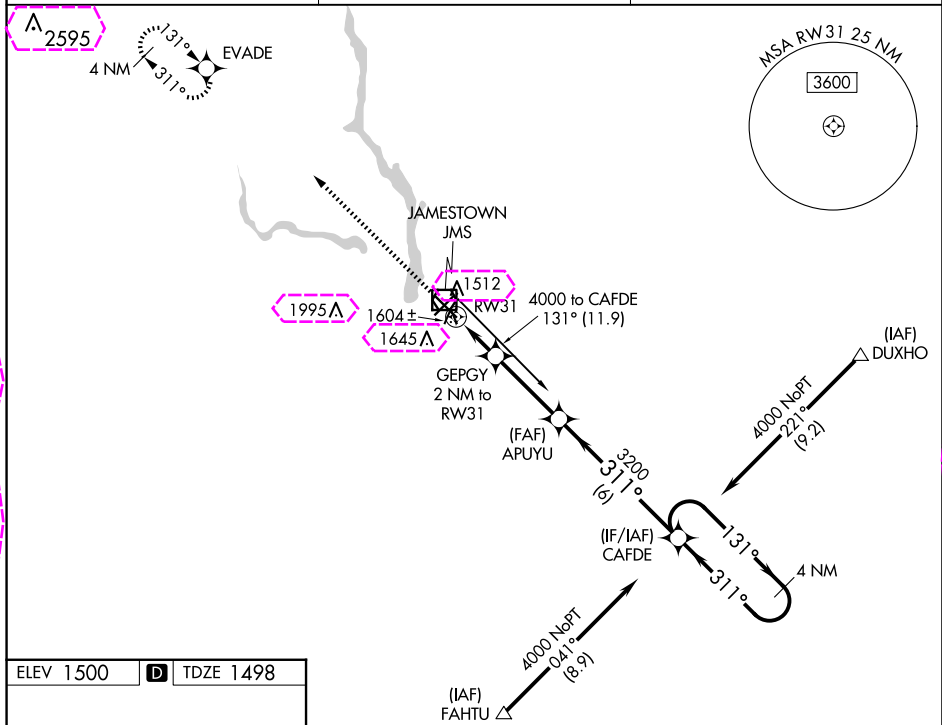


WAAS CH 66014 W31A	APP CRS 311°	Rwy Idg 6502 TDZE 1498 Apt Elev 1500
--	------------------------	---

RNAV (GPS) RWY 31
JAMESTOWN RGNL (JMS)

	<p>For uncompensated Baro-VNAV systems, LNAV/VNAV NA below -21°C (-5°F) or above 54°C (130°F). DME/DME RNP-0.3 NA.</p>	<p>MALSR</p>	<p>MISSED APPROACH: Climb to 3600 direct EVADE and hold.</p>
--	--	--------------	--

ASOS 118.425	MINNEAPOLIS CENTER 124.2 270.3	UNICOM 123.0 (CTAF) ①
------------------------	--	---------------------------------



MRL Rwy 4-22 **L**
 HIRL Rwy 13-31 **L**
 REIL Rws 4, 13, and 22 **L**

<div style="display: flex; justify-content: space-around;"> <div style="text-align: center;"> 3600 ↑ </div> <div style="text-align: center;"> EVADE ★ </div> </div>					
*RNAV only. 					
CATEGORY	A		B	C	D
LPV DA			1698-½	200 (200-½)	
RNAV/ VNAV DA			1786-½	288 (300-½)	
RNAV MDA	1880-½ 382 (400-½)		1880-⅝ 382 (400-⅝)		
CIRCLING	1960-1	460 (500-1)	2000-1½ 500 (500-1½)	2300-2½ 800 (800-2½)	

JAMESTOWN, NORTH DAKOTA

AL-685 (FAA)

25219

WAAS CH 66014 W31A	APP CRS 311°	Rwy Ldg 6502 TDZE 1498 Apt Elev 1500
--	------------------------	---

RNAV (GPS) RWY 31

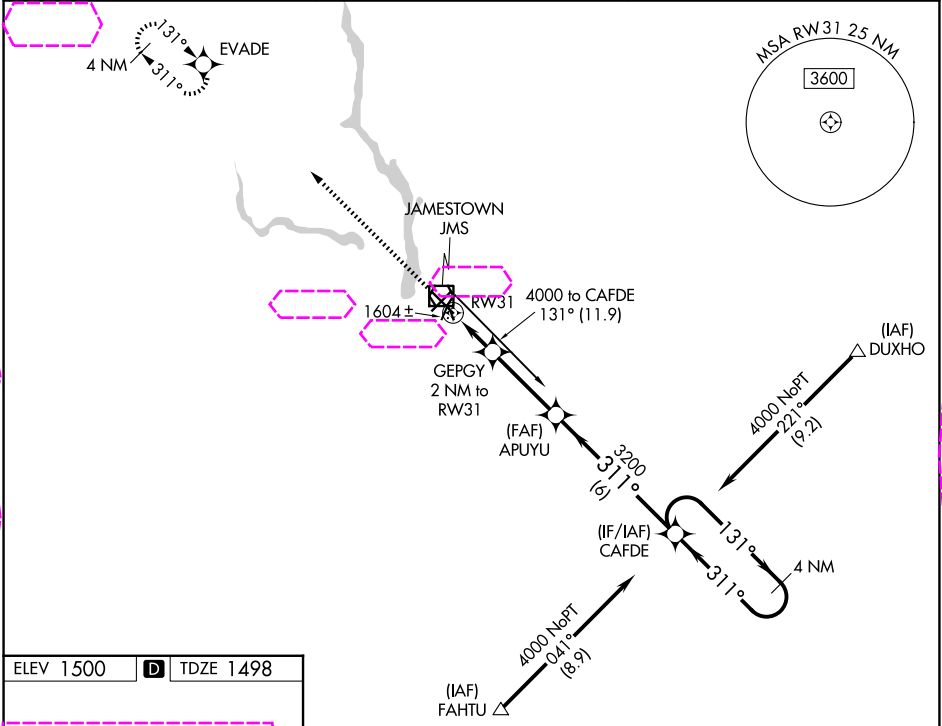
JAMESTOWN RGNL (JMS)

A For uncompensated Baro-VNAV systems, LNAV/VNAV NA below -21°C (-5°F) or above 54°C (130°F). DME/DME RNP-0.3 NA.

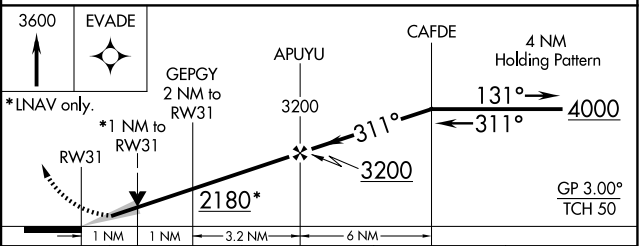
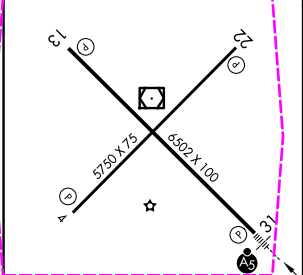
MALSR

MISSED APPROACH: Climb to 3600 direct EVADE and hold.

ASOS 118.425	MINNEAPOLIS CENTER 124.2 270.3	UNICOM 123.0 (CTAF) 0
------------------------	--	---------------------------------



ELEV 1500	D	TDZE 1498
-----------	----------	-----------



CATEGORY	A	B	C	D
LPV DA	1698-½ 200 (200-½)			
LNAV/VNAV DA	1786-½ 288 (300-½)			
LNAV MDA	1880-½ 382 (400-½)		1880-⅝ 382 (400-⅝)	
CIRCLING	1960-1 460 (500-1)		2000-1½ 500 (500-1½)	2300-2½ 800 (800-2½)

MIRL Rwy 4-22
HIRL Rwy 13-31
REIL Rwy 4, 13, and 22

JAMESTOWN, NORTH DAKOTA
Amdt 1 07DEC17

46°56'N-98°41'W

JAMESTOWN RGNL (JMS)

RNAV (GPS) RWY 31

NC-1, 07 AUG 2025 to 04 SEP 2025

NC-1, 07 AUG 2025 to 04 SEP 2025