

JAMESTOWN, NORTH DAKOTA

AL-685 (FAA)

21168

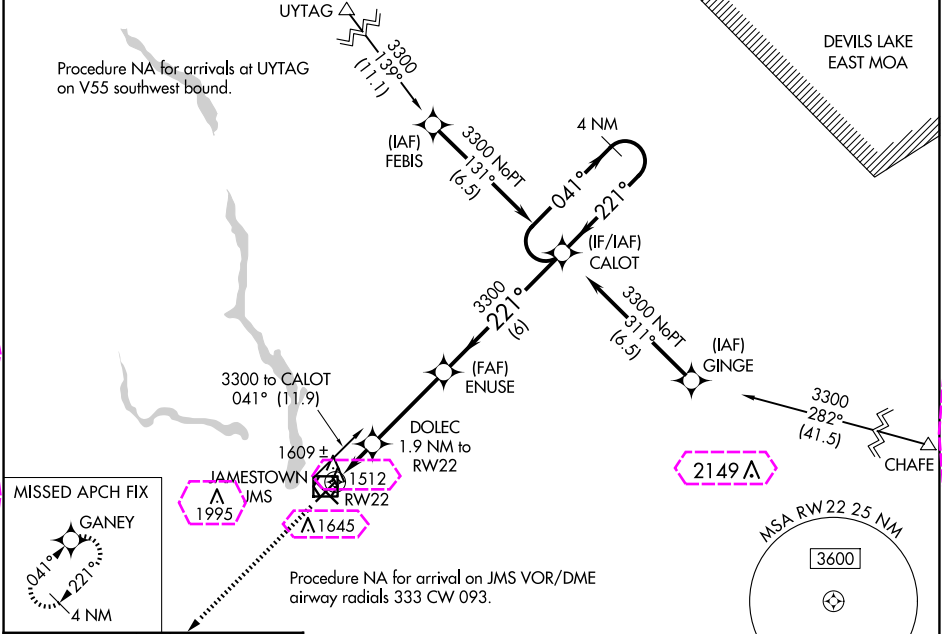
WAAS CH 70505 W22A	APP CRS 221°	Rwy Idg TDZE 1500 Apt Elev 1500
--	------------------------	---

RNAV (GPS) RWY 22

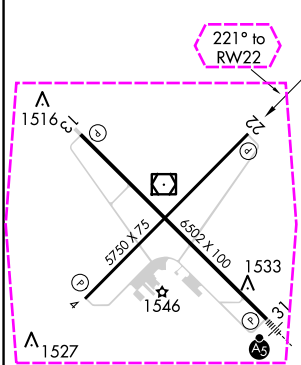
JAMESTOWN RGNL (JMS)

<p>⚠ For uncompensated Baro-VNAV systems, LNAV/VNAV NA below -21°C (5°F) or above 54°C (130°F). DME/DME RNP-0.3 NA.</p>	<p>MISSED APPROACH: Climb to 3700 direct GANEY and hold.</p>
--	--

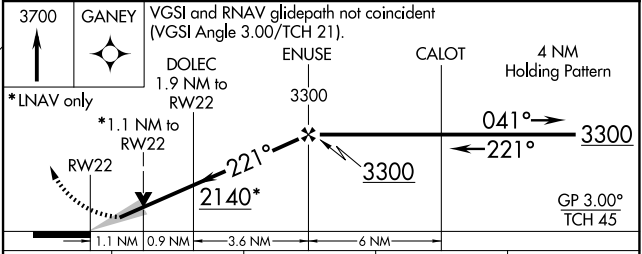
ASOS 118.425	MINNEAPOLIS CENTER 124.2 270.3	UNICOM 123.0 (CTAF) 0
------------------------	--	---------------------------------



ELEV 1500	D	TDZE 1500
-----------	----------	-----------



MIRL Rwy 4-22
HIRL Rwy 13-31
REIL Rwy 4, 13, and 22



CATEGORY	A	B	C	D
LPV DA	1750-3/4 250 (300-3/4)			
LNAV/VNAV DA	1790-1 290 (300-1)			
LNAV MDA	1860-1 360 (400-1)			
CIRCLING	1960-1	460 (500-1)	2000-1 1/2 500 (500-1 1/2)	2300-2 1/2 800 (800-2 1/2)

JAMESTOWN, NORTH DAKOTA
Amdt 1 07DEC17

46°56'N-98°41'W

JAMESTOWN RGNL (JMS) RNAV (GPS) RWY 22

JAMESTOWN, NORTH DAKOTA

AL-685 (FAA)

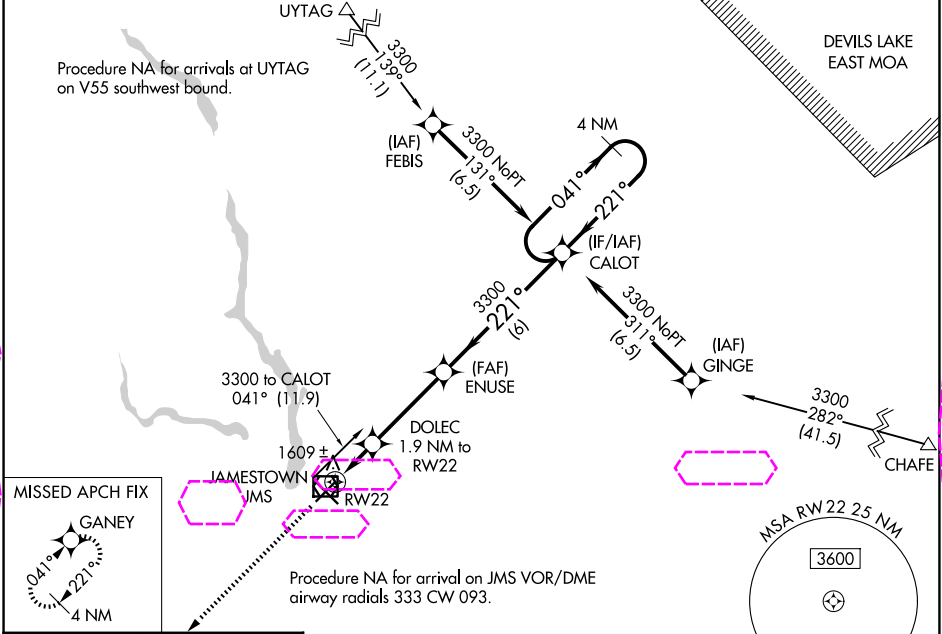
25219

WAAS CH 70505 W22A	APP CRS 221°	Rwy Ldg TDZE Apt Elev	5750 1500 1500
--	------------------------	-----------------------------	---

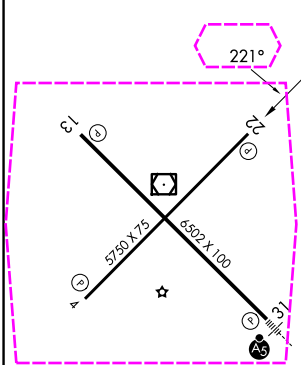
RNAV (GPS) RWY 22

JAMESTOWN RGNL (JMS)

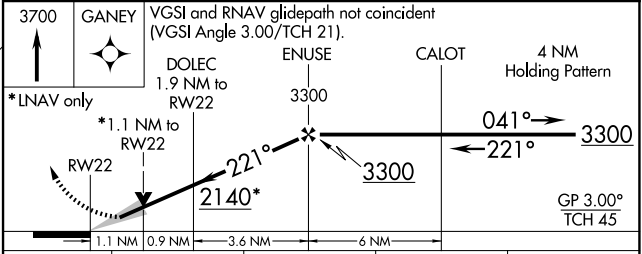
<p>⚠ For uncompensated Baro-VNAV systems, LNAV/VNAV NA below -21°C (5°F) or above 54°C (130°F). DME/DME RNP-0.3 NA.</p>		MISSED APPROACH: Climb to 3700 direct GANEY and hold.
ASOS 118.425	MINNEAPOLIS CENTER 124.2 270.3	UNICOM 123.0 (CTAF) 0



ELEV 1500	D	TDZE 1500
-----------	----------	-----------



MIRL Rwy 4-22 **0**
HIRL Rwy 13-31 **0**
REIL Rwy 4, 13, and 22 **0**



CATEGORY	A	B	C	D
LPV DA	1750-3/4 250 (300-3/4)			
LNAV/VNAV DA	1790-1 290 (300-1)			
LNAV MDA	1860-1 360 (400-1)			
CIRCLING	1960-1	460 (500-1)	2000-1 1/2 500 (500-1 1/2)	2300-2 1/2 800 (800-2 1/2)

JAMESTOWN, NORTH DAKOTA

Amdt 1 07DEC17

46°56'N-98°41'W

JAMESTOWN RGNL (JMS)

RNAV (GPS) RWY 22

NC-1, 07 AUG 2025 to 04 SEP 2025

NC-1, 07 AUG 2025 to 04 SEP 2025