

JAMESTOWN, NORTH DAKOTA

AL-685 (FAA)

21168

WAAS CH 65805 W13A	APP CRS 131°	Rwy Idg TDZE 1500 Apt. Elev 1500
--	------------------------	--

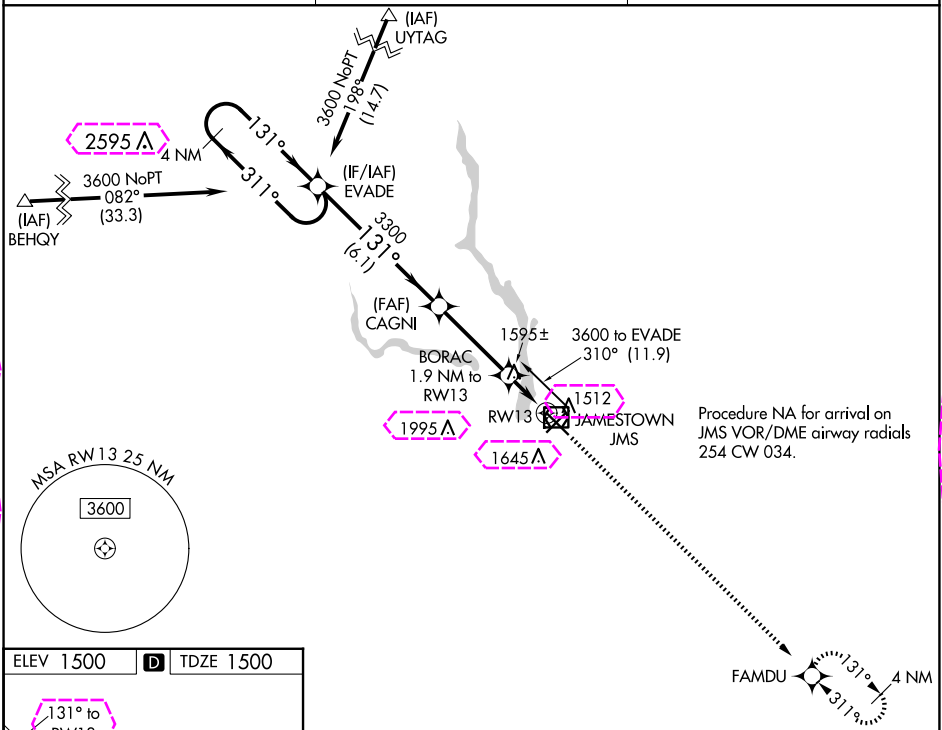
RNAV (GPS) RWY 13

JAMESTOWN RGNL (JMS)

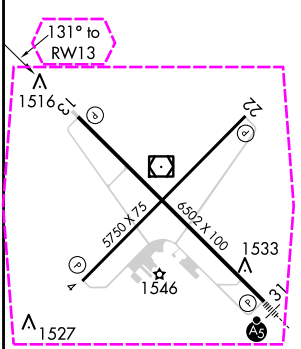
⚠ For uncompensated Baro-VNAV systems, LNAV/VNAV NA below -21°C (-5°F) or above 54°C (130°F). Rwy 13 helicopter visibility reduction below ¾ SM NA. DME/DME RNP-0.3 NA.

⚠ MISSED APPROACH: Climb to 3500 direct FAMDU and hold.

ASOS 118.425	MINNEAPOLIS CENTER 124.2 270.3	UNICOM 123.0 (CTAF) 0
------------------------	--	---------------------------------



ELEV 1500	D	TDZE 1500
-----------	----------	-----------



MIRL Rwy 4-22 **0**
HIRL Rwy 13-31 **0**
REIL Rws 4, 13, and 22 **0**

4 NM Holding Pattern		EVADE		CAGNI		BORAC 1.9 NM to RW13		3500 ↑		FAMDU ✦	
3600 ← 311° 131° →		131°		3300		*1 NM to RW13		*LNAV only		RW13	
GP 3.00° TCH 52				3300		*2160					
		6.1 NM		3.5 NM		0.9 NM		1 NM			
CATEGORY		A		B		C		D			
LPV DA		1787-1 287 (300-1)									
LNAV/ VNAV DA		1820-1 320 (400-1)									
LNAV MDA		1860-1 360 (400-1)								1860-1½ 360 (400-1½)	
CIRCLING		1960-1 460 (500-1)				2000-1½ 500 (500-1½)				2300-2½ 800 (800-2½)	

JAMESTOWN, NORTH DAKOTA
Orig-A 07DEC17

46°56'N-98°41'W

JAMESTOWN RGNL (JMS)

RNAV (GPS) RWY 13

NC-1, 10 JUL 2025 to 07 AUG 2025

NC-1, 10 JUL 2025 to 07 AUG 2025

JAMESTOWN, NORTH DAKOTA

AL-685 (FAA)

25219

WAAS CH 65805 W13A	APP CRS 131°	Rwy Ldg TDZE Apt. Elev	6502 1500 1500
--	------------------------	------------------------------	---

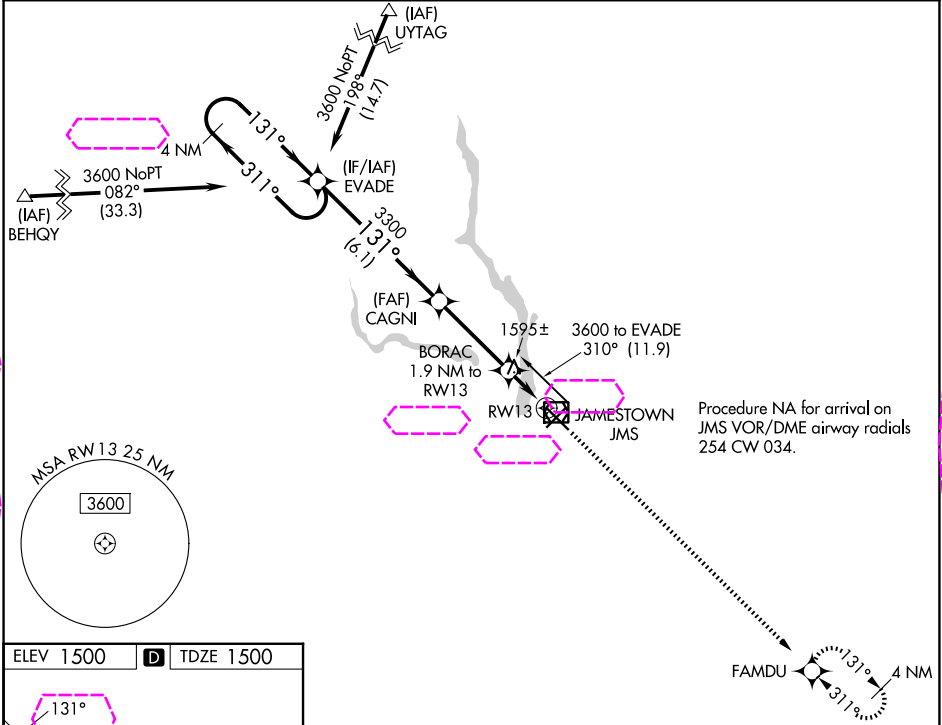
RNAV (GPS) RWY 13

JAMESTOWN RGNL (JMS)

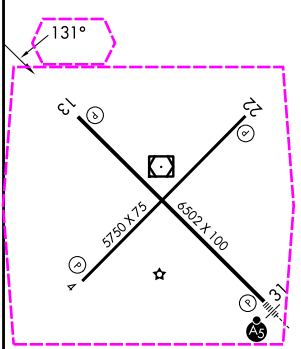
⚠ For uncompensated Baro-VNAV systems, LNAV/VNAV NA below -21°C (-5°F) or above 54°C (130°F). Rwy 13 helicopter visibility reduction below ¾ SM NA. DME/DME RNP-0.3 NA.

MISSSED APPROACH: Climb to 3500 direct FAMDU and hold.

ASOS 118.425	MINNEAPOLIS CENTER 124.2 270.3	UNICOM 123.0 (CTAF) 0
------------------------	--	---------------------------------



ELEV 1500	D	TDZE 1500
-----------	----------	-----------



MIRL Rwy 4-22 0
HIRL Rwy 13-31 0
REIL Rws 4, 13, and 22 0

4 NM Holding Pattern		EVADE	CAGNI	BORAC 1.9 NM to RWY 13	3500	FAMDU
3600		311°	131°	131°	↑	✧
GP 3.00°		TCH 52	3300	*2160	*1 NM to RWY 13	*LNAV only
		6.1 NM	3.5 NM	0.9 NM	1 NM	
CATEGORY	A	B	C	D		
LPV DA	1787-1		287 (300-1)			
LNAV/VNAV DA	1820-1		320 (400-1)			
LNAV MDA	1860-1		360 (400-1)		1860-1¼ 360 (400-1¼)	
CIRCLING	1960-1		460 (500-1)		2000-1½ 500 (500-1½)	
					2300-2½ 800 (800-2½)	

JAMESTOWN, NORTH DAKOTA
Orig-A 07DEC17

46°56'N-98°41'W

JAMESTOWN RGNL (JMS)

RNAV (GPS) RWY 13

NC-1, 07 AUG 2025 to 04 SEP 2025

NC-1, 07 AUG 2025 to 04 SEP 2025