

JAMESTOWN, NORTH DAKOTA

AL-685 (FAA)

21168

LOC I-JMS 109.3	APP CRS 131°	Rwy Idg 6502
		TDZE 1500
		Apt Elev 1500

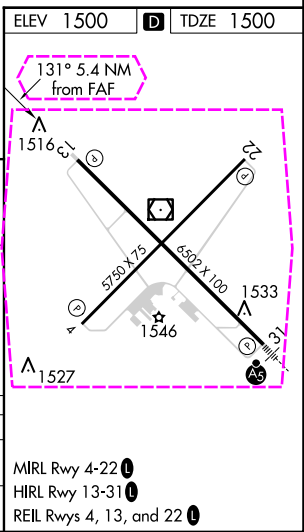
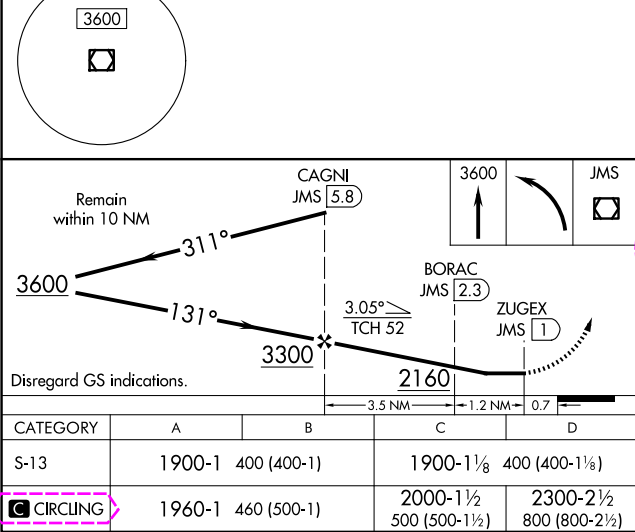
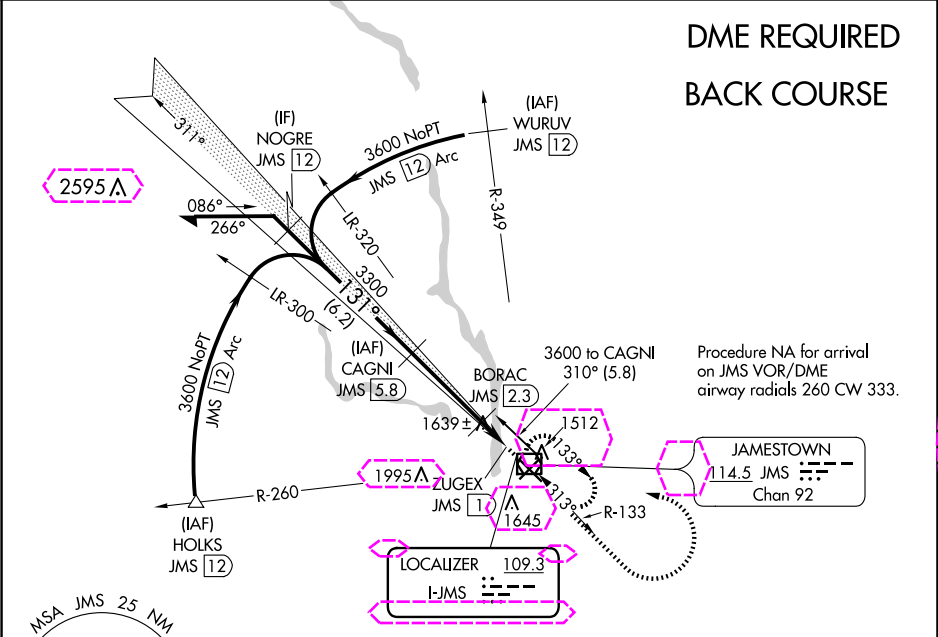
LOC BC RWY 13
JAMESTOWN RGNL (JMS)

NA Rwy 13 helicopter visibility reduction below ¾ SM NA.
DME required. DME from JMS VOR/DME. Simultaneous reception of I-JMS and JMS VOR/DME required.

MISSED APPROACH: Climb to 3600 then left turn direct JMS VOR/DME and hold.

ASOS 118.425	MINNEAPOLIS CENTER 124.2 270.3	UNICOM 123.0 (CTAF) 0
------------------------	--	---------------------------------

DME REQUIRED
BACK COURSE



JAMESTOWN, NORTH DAKOTA

AL-685 (FAA)

25219

LOC I-JMS 109.3	APP CRS 131°	Rwy Ldg TDZE Apt Elev	6502 1500 1500
---------------------------	------------------------	-----------------------------	---

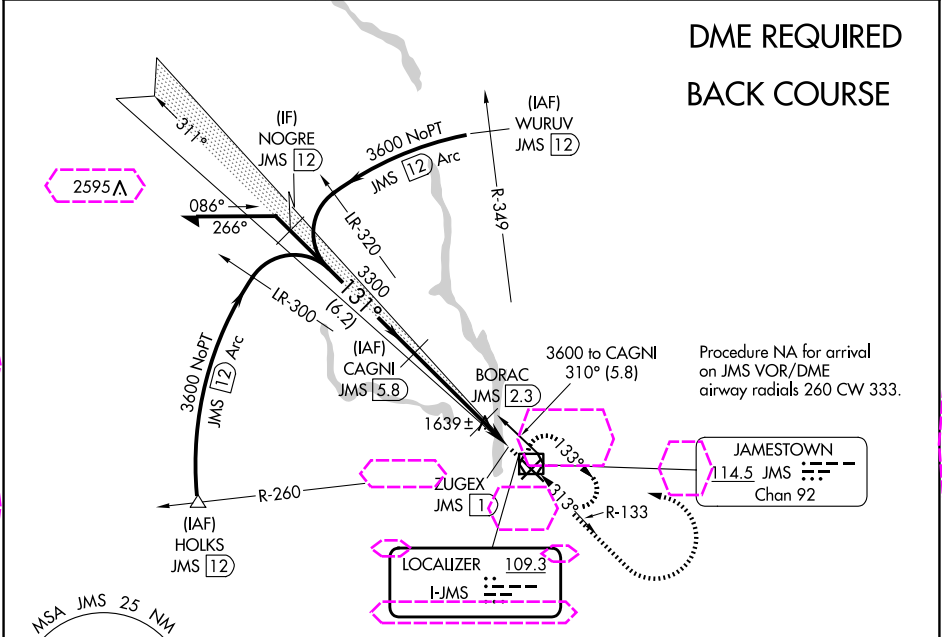
LOC BC RWY 13
JAMESTOWN RGNL (JMS)

NA Rwy 13 helicopter visibility reduction below ¾ SM NA. DME required. DME from JMS VOR/DME. Simultaneous reception of I-JMS and JMS VOR/DME required.

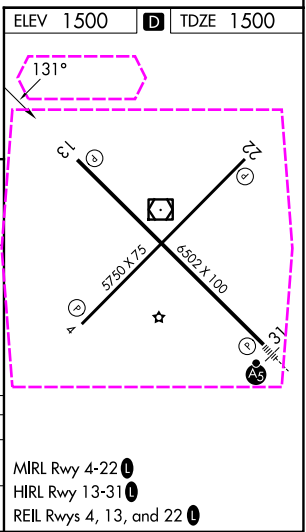
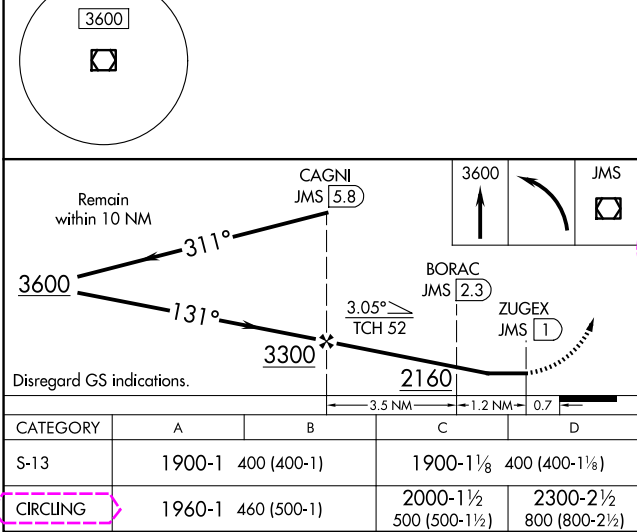
MISSED APPROACH: Climb to 3600 then left turn direct JMS VOR/DME and hold.

ASOS 118.425	MINNEAPOLIS CENTER 124.2 270.3	UNICOM 123.0 (CTAF) 0
------------------------	--	---------------------------------

DME REQUIRED
BACK COURSE



Procedure NA for arrival on JMS VOR/DME airway radials 260 CW 333.



JAMESTOWN, NORTH DAKOTA
Amdt 8 07DEC17

46°56'N-98°41'W

JAMESTOWN RGNL (JMS)
LOC BC RWY 13

NC-1, 07 AUG 2025 to 04 SEP 2025

NC-1, 07 AUG 2025 to 04 SEP 2025