

JAMESTOWN, NORTH DAKOTA

AL-685 (FAA)

21168

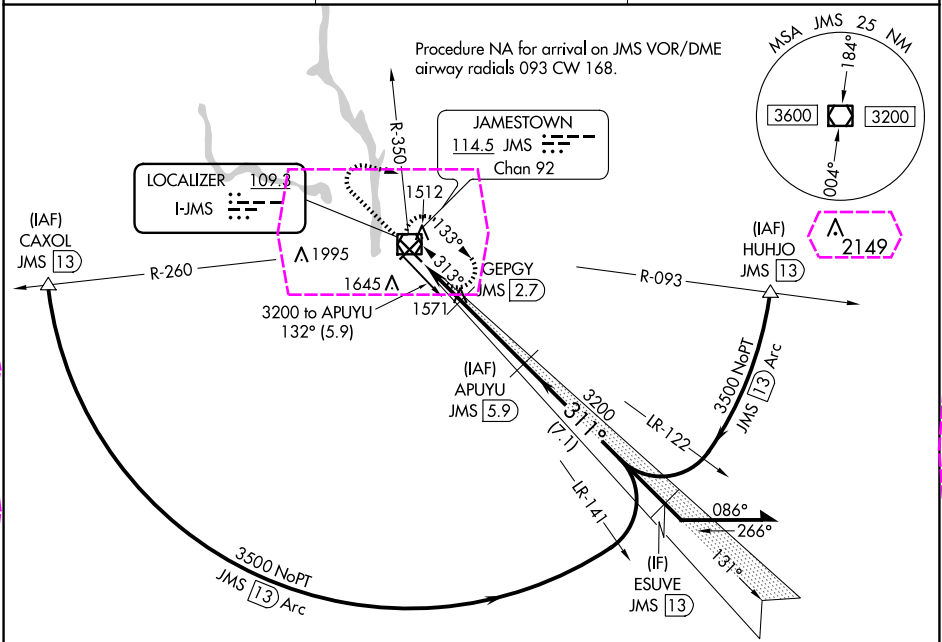
LOC I-JMS 109.3	APP CRS 311°	Rwy Idg 6502 TDZE 1498 Apt Elev 1500
---------------------------	------------------------	---

ILS or LOC RWY 31

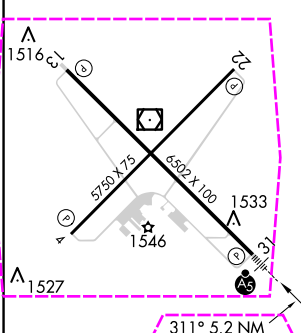
JAMESTOWN RGNL (JMS)

▼ Autopilot coupled approach NA below 1900. DME required. ▲ NA DME from JMS VOR/DME. Simultaneous reception of I-JMS and JMS VOR/DME required.	MALSR 	MISSED APPROACH: Climb to 3200 then right turn heading 100° and on JMS VOR/DME R-350 to JMS VOR/DME and hold.
---	------------------	--

ASOS 118.425	MINNEAPOLIS CENTER 124.2 270.3	UNICOM 123.0 (CTAF) 0
-------------------------------	---	--

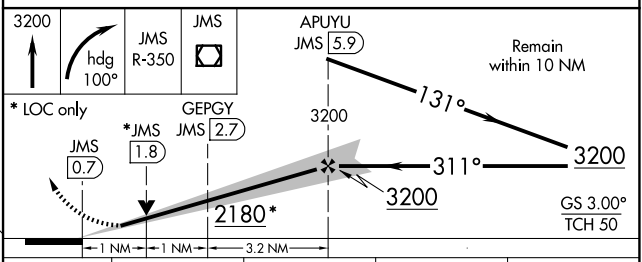


ELEV 1500	D	TDZE 1498
-----------	----------	-----------



MIRL Rwy 4-22	0
HIRL Rwy 13-31	0
REIL Rwys 4, 13, and 22	0
FAF to MAP 5.2 NM	
Knots	60 90 120 150 180
Min:Sec	5:12 3:28 2:36 2:05 1:44

DME REQUIRED



CATEGORY	A	B	C	D
S-ILS 31	1698-½ 200 (200-½)			
S-LOC 31	1880-½	382 (400-½)	1880-⅝	382 (400-⅝)
CIRCLING	1960-1	460 (500-1)	2000-1½ 500 (500-1½)	2300-2½ 800 (800-2½)

JAMESTOWN, NORTH DAKOTA

Amtd 8 07DEC17

46°56'N-98°41'W

JAMESTOWN RGNL (JMS)

ILS or LOC RWY 31

NC-1, 10 JUL 2025 to 07 AUG 2025

NC-1, 10 JUL 2025 to 07 AUG 2025

JAMESTOWN, NORTH DAKOTA

AL-685 (FAA)

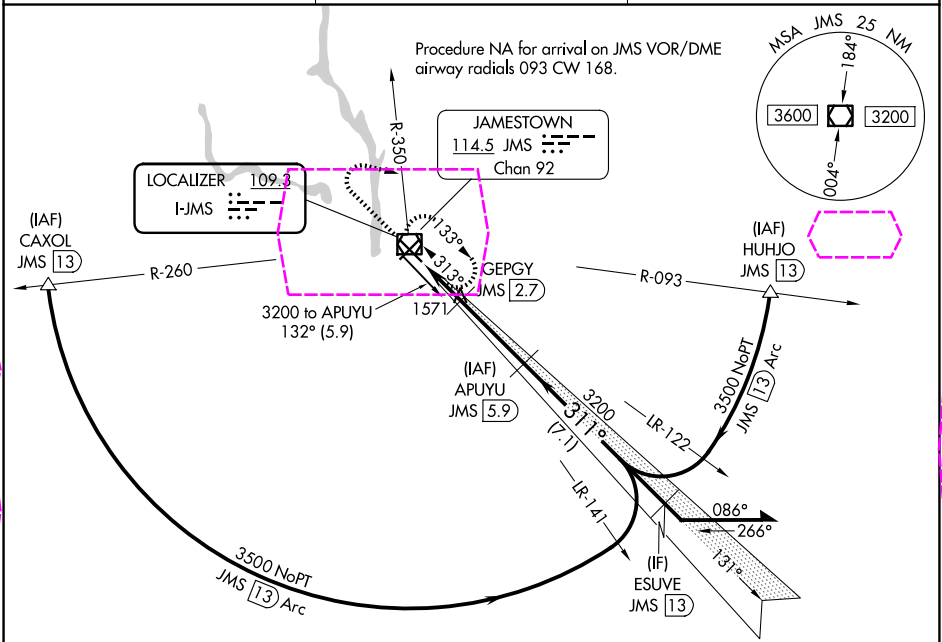
25219

LOC I-JMS 109.3	APP CRS 311°	Rwy Ldg 6502 TDZE 1498 Apt Elev 1500
---------------------------	------------------------	---

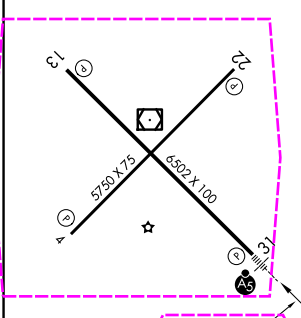
ILS or LOC RWY 31
JAMESTOWN RGNL (JMS)

▼ Autopilot coupled approach NA below 1900. DME required. ▲ NA DME from JMS VOR/DME. Simultaneous reception of I-JMS and JMS VOR/DME required.	MALSR 	MISSED APPROACH: Climb to 3200 then right turn heading 100° and on JMS VOR/DME R-350 to JMS VOR/DME and hold.
---	------------------	--

ASOS 118.425	MINNEAPOLIS CENTER 124.2 270.3	UNICOM 123.0 (CTAF) 0
-------------------------------	---	--

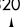

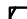


ELEV 1500	D	TDZE 1498
-----------	----------	-----------



MIRL Rwy 4-22	0
HIRL Rwy 13-31	0
REL Rwys 4, 13, and 22	0
FAF to MAP 5.2 NM	
Knots	60 90 120 150 180
Min:Sec	5:12 3:28 2:36 2:05 1:44

DME REQUIRED

3200		 hdg 100°	JMS R-350	JMS 	APUYU JMS <u>5.9</u>	Remain within 10 NM
* LOC only			GEPGY JMS <u>2.7</u>	3200	131°	
	JMS <u>0.7</u>	* JMS <u>1.8</u>		3200	311°	3200
				2180*	3200	GS 3.00° TCH 50
	1 NM 1 NM 3.2 NM					
CATEGORY	A		B	C	D	
S-ILS 31	1698-½		200 (200-½)			
S-LOC 31	1880-½		382 (400-½)		1880-⅝ 382 (400-⅝)	
CIRCLING	1960-1		460 (500-1)		2000-1½ 500 (500-½) 2300-2½ 800 (800-2½)	

JAMESTOWN, NORTH DAKOTA

Amtd 8 07DEC17

46°56'N-98°41'W

JAMESTOWN RGNL (JMS)
ILS or LOC RWY 31

NC-1, 07 AUG 2025 to 04 SEP 2025

NC-1, 07 AUG 2025 to 04 SEP 2025