

PORTSMOUTH, NEW HAMPSHIRE

AL-678 (FAA)

21364

WAAS CH 40012 W16A	APP CRS 165°	Rwy Idg 10518 TDZE 100 Apt Elev 100
--	------------------------	--

RNAV (GPS) RWY 16

PORTSMOUTH INTL AT PEASE (PSM)

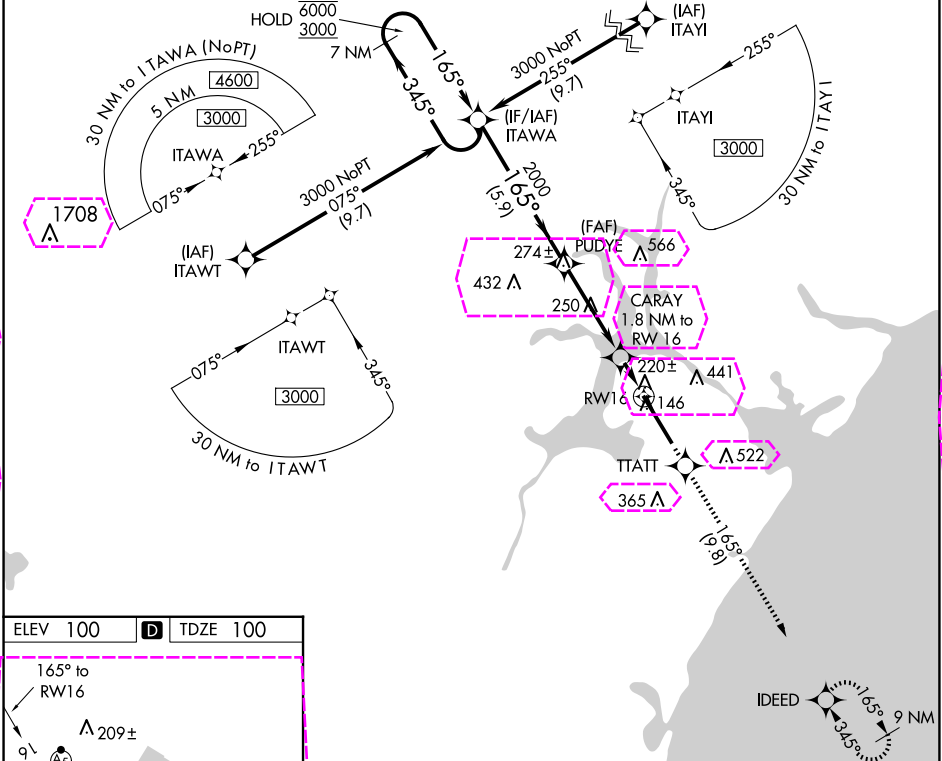
RNP APCH - GPS.

▼ For uncompensated Baro-VNAV systems, LNAV/VNAV NA below -15°C or above 54°C. Circling NA east of Rwy 16-34. For inop ALS, increase LPV Cat E visibility to RVR 4500; increase LNAV/VNAV all Cats visibility to RVR 4500; increase LNAV Cat C/D/E visibility to RVR 5500. * RVR 1800 authorized with use of FD or AP or HUD to DA (NA when using Rochester altimeter setting).

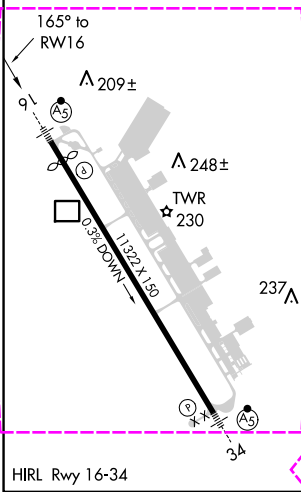
MALSRL

MISSED APPROACH:
Climb to 3000 direct
TTATT and track 165° to
IDEED and hold, continue
climb-in-hold to 3000.

ATIS 132.05 273.5	BOSTON APP CON 125.05 269.4	PORTSMOUTH TOWER 128.4 269.0	GND CON 120.95 275.8	CLNC DEL 335.8
-----------------------------	---------------------------------------	--	--------------------------------	--------------------------



ELEV 100	D	TDZE 100
----------	----------	----------



VGSI and RNAV glidepath not coincident (VGSI Angle 3.00/TCH 72).					3000	TTATT	IDEED
7 NM Holding Pattern ITAWA							
GP 3.00° TCH 55					6000 3000	2000 720	1 NM to RW16
					345° 165°	165°	165°
					5.9 NM	4 NM	0.8 NM
CATEGORY	A	B	C	D	E		
LPV DA*	300/24 200 (200-½)						
LNAV/VNAV DA	397/24 297 (300-½)						
LNAV MDA	480/24	380 (400-½)	480/35	380 (400-¾)			
	500-1	560-1	680-1½	780-2¼	800-2½		
	400 (400-1)	460 (500-1)	580 (600-½)	680 (700-2¼)	700 (700-2½)		

PORTSMOUTH, NEW HAMPSHIRE
Amdt 3A 30DEC21

43°05'N-70°49'W

PORTSMOUTH INTL AT PEASE (PSM)
RNAV (GPS) RWY 16

NE-1, 10 JUL 2025 to 07 AUG 2025

NE-1, 10 JUL 2025 to 07 AUG 2025

PORTSMOUTH, NEW HAMPSHIRE

AL-678 (FAA)

25219

WAAS CH 40012 W16A	APP CRS 165°	Rwy Ldg 10518 TDZE 100 Apt Elev 100
--	------------------------	--

RNAV (GPS) RWY 16

PORTSMOUTH INTL AT PEASE (PSM)

RNP APCH - GPS.

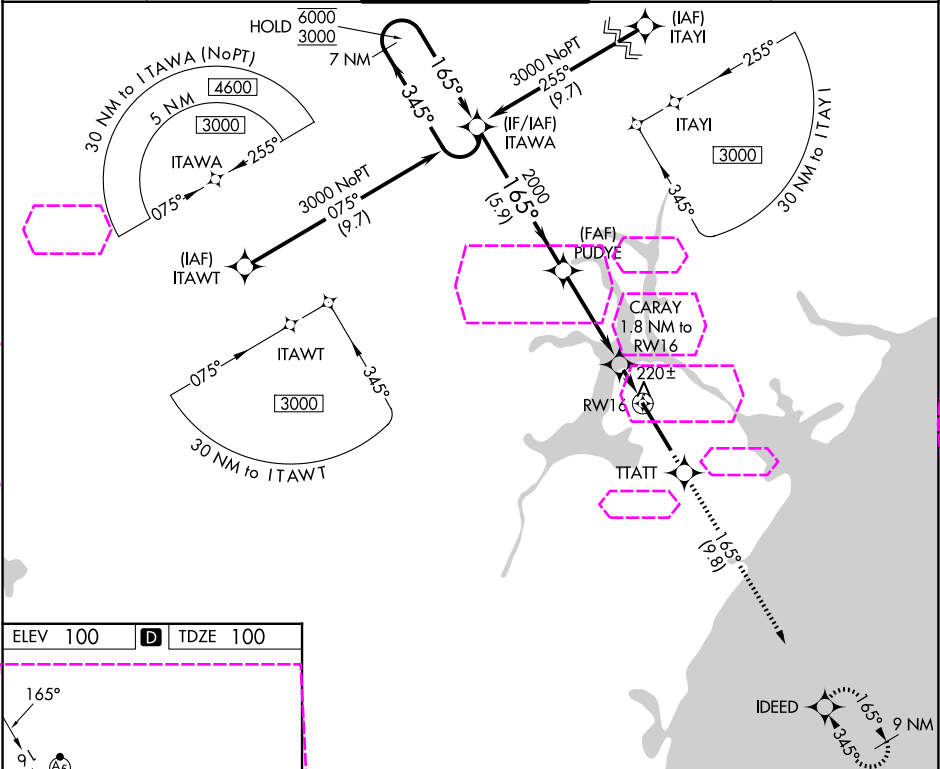
▼ For uncompensated Baro-VNAV systems, LNAV/VNAV NA below -15°C or above 54°C. Circling NA east of Rwy 16-34. For inop ALS, increase LPV Cat E visibility to RVR 4500; increase LNAV/VNAV all Cats visibility to RVR 4500; increase LNAV Cat C/D/E visibility to RVR 5500. * RVR 1800 authorized with use of FD or AP or HUD to DA (NA when using Rochester altimeter setting).

MALSR

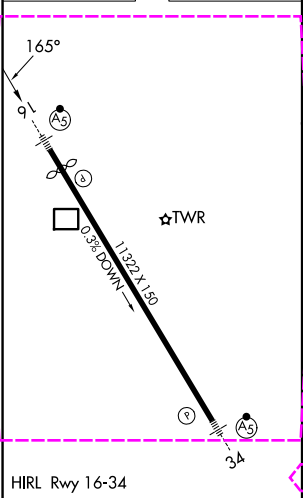


MISSED APPROACH:
Climb to 3000 direct
TTATT and track 165° to
IDEED and hold, continue
climb-in-hold to 3000.

ATIS 132.05 273.5	BOSTON APP CON 125.05 269.4	PORTSMOUTH TOWER 128.4 269.0	GND CON 120.95 275.8	CLNC DEL 335.8
-----------------------------	---------------------------------------	--	--------------------------------	--------------------------



ELEV 100	D	TDZE 100
----------	----------	----------



VGSI and RNAV glidepath not coincident 7 NM (VGSI Angle 3.00°/TCH 72).					3000	TTATT	IDEED
Holding Pattern ITAWA					↑	✧	✧
GP 3.00° TCH 55					2000	720	
					← 5.9 NM →	← 4 NM →	← 0.8 NM →
CATEGORY	A	B	C	D	E		
LPV DA*	300/24				200 (200-½)		
LNAV/VNAV DA	397/24				297 (300-½)		
LNAV MDA	480/24	380 (400-½)	480/35		380 (400-¾)		
CIRCLING	500-1 400 (400-1)	560-1 460 (500-1)	680-1½ 580 (600-1½)	780-2¼ 680 (700-2¼)	800-2½ 700 (700-2½)		

PORTSMOUTH, NEW HAMPSHIRE

Amdt 3A 30DEC21

43°05'N-70°49'W

PORTSMOUTH INTL AT PEASE (PSM)

RNAV (GPS) RWY 16

NE-1, 07 AUG 2025 to 04 SEP 2025

NE-1, 07 AUG 2025 to 04 SEP 2025