

PORTSMOUTH, NEW HAMPSHIRE

AL-678 (FAA)

21336

LOC I-PSM 110.1	APP CRS 345°	Rwy Idg 11321
		TDZE 84
		App Elev 100

ILS or LOC RWY 34
PORTSMOUTH INTL AT PEASE (PSM)

DME or RADAR required.

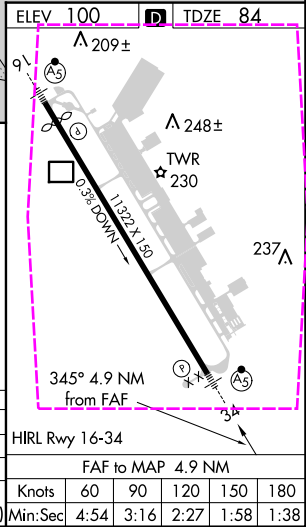
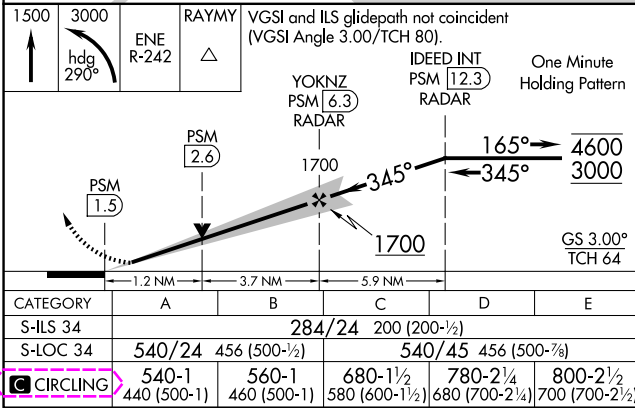
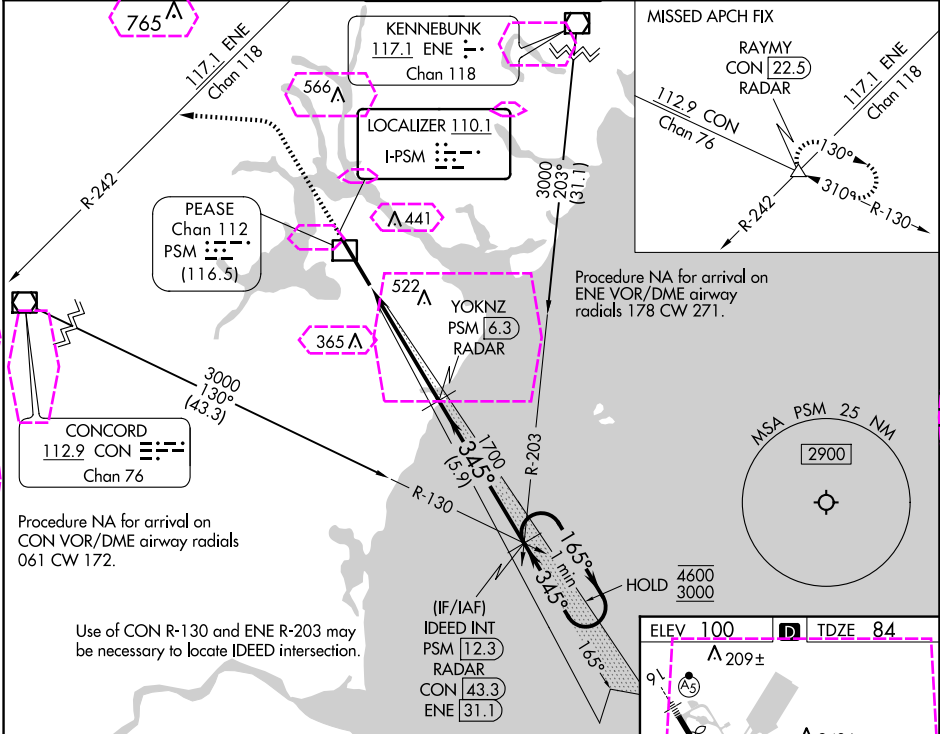
⚠

Circling NA east of Rwy 16-34. DME from PSM DME. Simultaneous reception of I-PSM and PSM DME required. For inop ALS, increase S-ILS 34 Cat E visibility to RVR 4000; increase S-LOC 34 Cat E visibility to 1 1/2 SM.

MALSR

MISSED APPROACH: Climb to 1500 then dimbing left turn on heading 290° to 3000 and ENE VOR/DME R-242 to RAYMY INT/CON VOR/DME 22.5 DME/RADAR and hold.

ATIS 132.05 273.5	BOSTON APP CON 125.05 269.4	PORTSMOUTH TOWER 128.4 269.0	GND CON 120.95 275.8	CLNC DEL 335.8
-----------------------------	---------------------------------------	--	--------------------------------	--------------------------



PORTSMOUTH, NEW HAMPSHIRE

AL-678 (FAA)

25219

LOC I-PSM 110.1	APP CRS 345°	Rwy Ldg 11321
		TDZE 84
		App Elev 100

ILS or LOC RWY 34

PORTSMOUTH INTL AT PEASE (PSM)

DME or RADAR required.

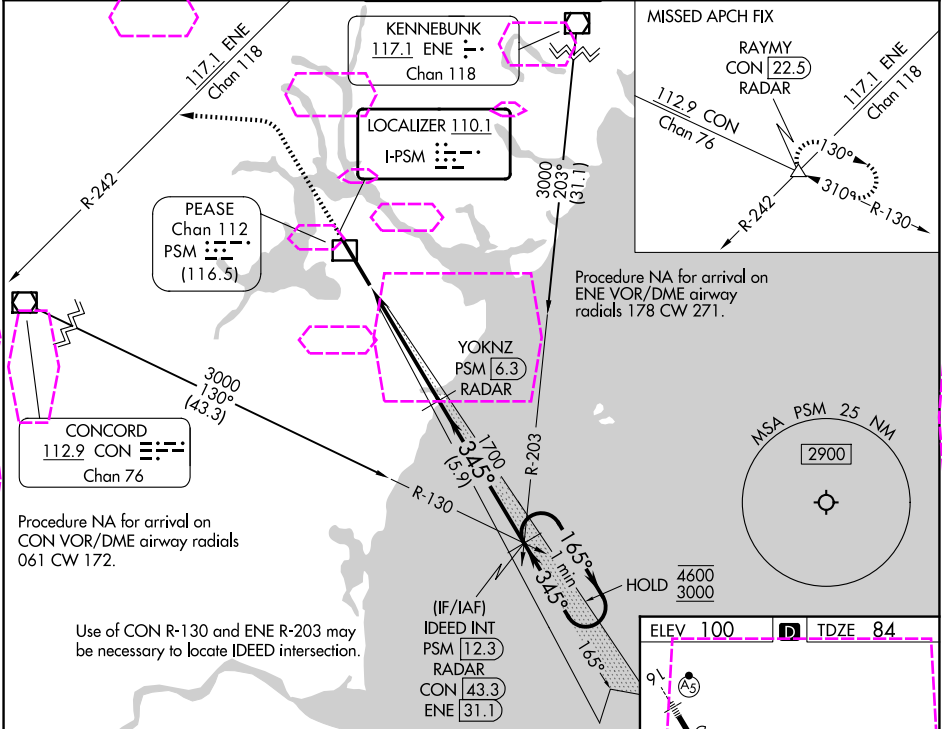
⚠

Circling NA east of Rwy 16-34. DME from PSM DME. Simultaneous reception of I-PSM and PSM DME required. For inop ALS, increase S-ILS 34 Cat E visibility to RVR 4000; increase S-LOC 34 Cat E visibility to 1 1/2 SM.

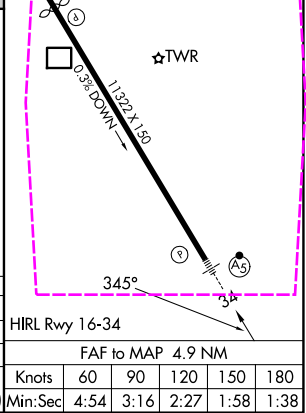
MAISLR

MISSED APPROACH: Climb to 1500 then dimbing left turn on heading 290° to 3000 and ENE VOR/DME R-242 to RAYMY INT/CON VOR/DME 22.5 DME/RADAR and hold.

ATIS 132.05 273.5	BOSTON APP CON 125.05 269.4	PORTSMOUTH TOWER 128.4 269.0	GND CON 120.95 275.8	CLNC DEL 335.8
-----------------------------	---------------------------------------	--	--------------------------------	--------------------------



1500	3000	RAYMY	VGSI and ILS glidepath not coincident (VGSI Angle 3.00/TCH 80).	IDEED INT PSM 12.3 RADAR	One Minute Holding Pattern
hdg 290°	ENE R-242	△		YOKNZ PSM 6.3 RADAR	
				PSM 2.6	
				1700	
				345°	
				165°	
				4600	
				3000	
				GS 3.00° TCH 64	
				1.2 NM	
				3.7 NM	
				5.9 NM	
CATEGORY	A	B	C	D	E
S-ILS 34			284/24	200 (200-1/2)	
S-LOC 34	540/24	456 (500-1/2)	540/45	456 (500-3/4)	
CIRCLING	540-1 440 (500-1)	560-1 460 (500-1)	680-1 1/2 580 (600-1 1/2)	780-2 1/4 680 (700-2 1/4)	800-2 1/2 700 (700-2 1/2)



NE-1, 07 AUG 2025 to 04 SEP 2025

NE-1, 07 AUG 2025 to 04 SEP 2025