

ILS or LOC RWY 16
PORTSMOUTH INTL AT PEASE (PSM)

MALSR
A5

MISSED APPROACH: Climb to 1500 then climbing right turn to 3000 on CON VOR/DME R-130 to RAYMY INT/CON VOR/DME 22.5 DME/RADAR and hold

HIRL Rwy 16-34

FAF to MAP	5.8 NM
------------	--------

Knots	60	90	120	150	180
Min:Sec	5:48	3:52	2:54	2:19	1:56

Amdt 3A 30DEC21

43°05'N-70°49'W

PORTSMOUTH INTL AT PEASE (PSM)

ILS or LOC RWY 16

PORTSMOUTH, NEW HAMPSHIRE

AL-678 (FAA)

25219

LOC I-PGQ 110.1	APP CRS 165°	Rwy Ldg 10518
	TDZE 100	
	App Elev 100	

ILS or LOC RWY 16
PORTSMOUTH INTL AT PEASE (PSM)

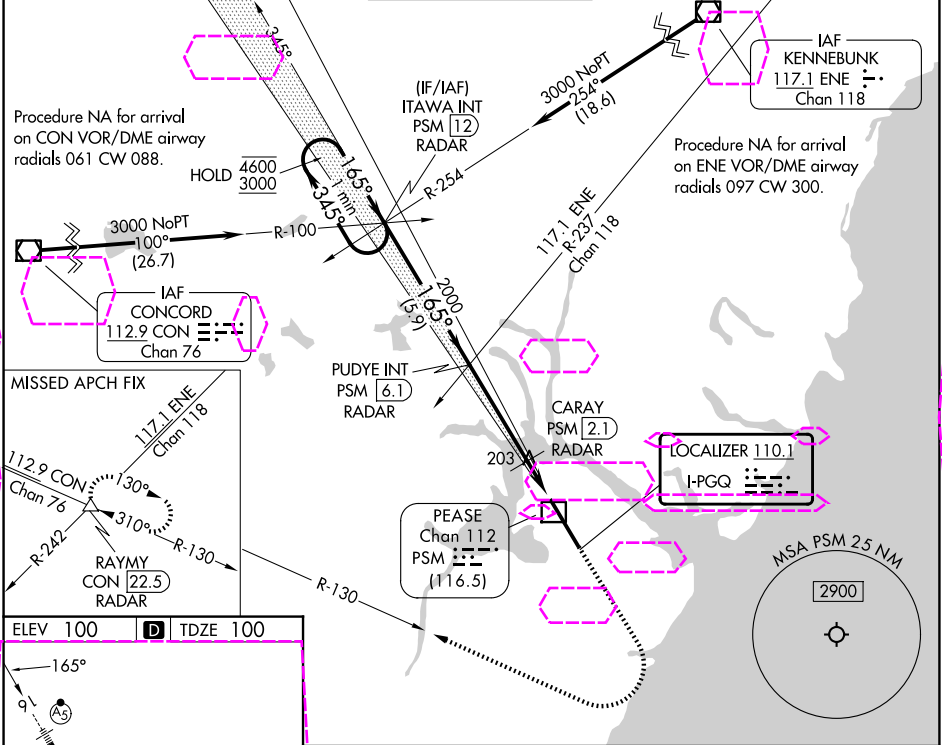
DME or RADAR required.

⚠ Circling NA east of Rwy 16-34. DME from PSM DME. Simultaneous reception of I-PGQ and PSM DME required. For inop ALS, increase S-ILS 16 Cat D visibility to RVR 4000; increase S-LOC 16 Cat C/D/E visibility to RVR 5500. * RVR 1800 authorized with use of FD or AP or HUD to DA (NA when using Rochester altimeter setting).

MALSR

MISSED APPROACH: Climb to 1500 then climbing right turn to 3000 on CON VOR/DME R-130 to RAYMY INT/CON VOR/DME 22.5 DME/RADAR and hold.

ATIS 132.05 273.5	BOSTON APP CON 125.05 269.4	PORTSMOUTH TOWER 128.4 269.0	GND CON 120.95 275.8	CLNC DEL 335.8
-----------------------------	---------------------------------------	--	--------------------------------	--------------------------



ELEV 100 TDZE 100

HIRL Rwy 16-34

FAF to MAP 5.8 NM

Knots	60	90	120	150	180
Min:Sec	5:48	3:52	2:54	2:19	1:56

VGSI and ILS glidepath not coincident (VGSI Angle 3.00/TCH 72).					
One Minute Holding Pattern			1500	3000	RAYMY
ITAWA INT PSM [12] RADAR			CON R-130		
PUDYE INT PSM [6.1] RADAR			CARAY PSM [2.1] RADAR		
CARAY PSM [2.1] RADAR			RAYMY PSM [1.3] RADAR		
RAYMY PSM [1.3] RADAR			RAYMY PSM [0.3] RADAR		
GS 3.00° TCH 55			MSA PSM 25 NM		
CATEGORY A			E		
S-ILS 16*			300/24 200 (200-½)		
S-LOC 16			480/24 380 (400-½)		
CIRCLING			540-1 560-1 680-1½ 780-2¼ 800-2½		
			440 (500-1) 460 (500-1) 580 (600-1½) 680 (700-2¼) 700 (700-2½)		

PORTSMOUTH, NEW HAMPSHIRE
Amdt 3A 30DEC21

43°05'N-70°49'W

PORTSMOUTH INTL AT PEASE (PSM)
ILS or LOC RWY 16