

WAAS CH 53320 W09A	APP CRS 092°	Rwy Idg TDZE Apt Elev	5999 34 48
----------------------------------------	------------------------	-----------------------------	---------------------------------------

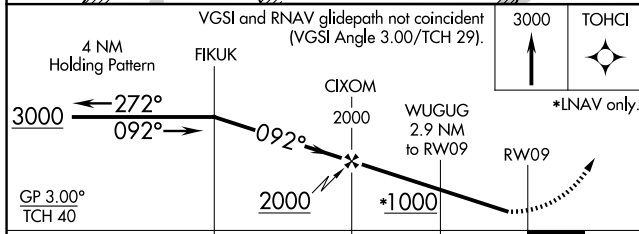
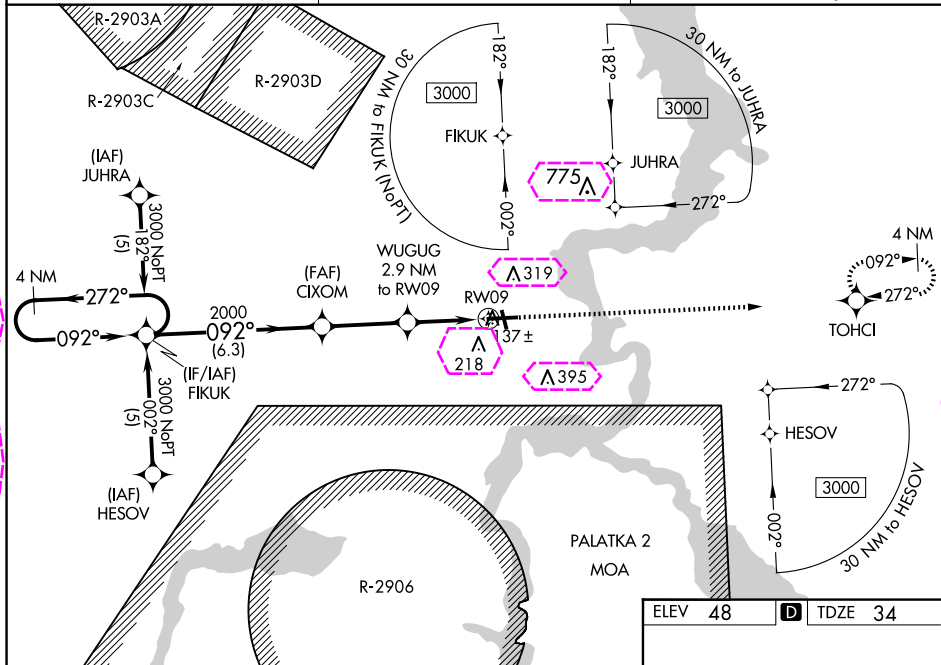
RNAV (GPS) RWY 9
PALATKA MUNI/LT KAY LARKIN FLD (28J)

RNP APCH.

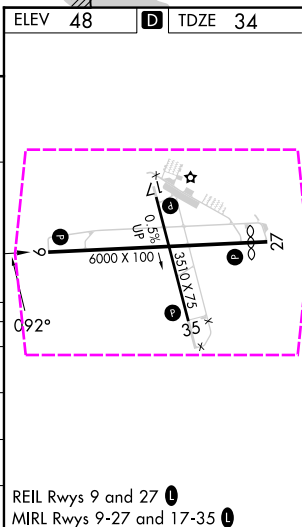
V
A Baro-VNAV NA when using St Augustine altimeter setting. For uncompensated Baro-VNAV systems, LNAV/VNAV NA below -15°C (5°F) or above 49°C (120°F). Rwy 9 helicopter visibility reduction below ¾ SM NA. When local altimeter setting not received, use St Augustine altimeter setting and increase LPV DA all Cats to 379 feet, LNAV/VNAV DA all Cats to 457 feet, and all MDA 80 feet; increase LPV all Cats and LNAV Cats C/D visibility ½ SM, and LNAV/VNAV all Cats and Circling Cat C/D visibility ¼ SM. Circling Rwy 17, 35 NA at night.

MISSED APPROACH:
Climb to 3000 direct
TOHCL and hold.

AWOS-3 119.925	JACKSONVILLE APP CON 118.175 338.25	UNICOM 122.8 (CTAF) 0
--------------------------	-----------------------------------------------	---------------------------------



		6.3 NM		3.1 NM		2.9 NM	
CATEGORY		A		B		C	
LPV	DA	314-1		280 (300-1)			
LNAV/ VNAV	DA	392-1¼		358 (400-1¼)			
LNAV MDA		480-1	446 (500-1)	480-1¾ 446 (500-1¾)	480-1½ 446 (500-1½)		
CIRCLING		620-1	572 (600-1)	700-1¼ 652 (700-1¼)	700-2 652 (700-2)		



PALATKA, FLORIDA

AL-677 (FAA)

25219

WAAS CH 53320 W09A	APP CRS 092°	Rwy Ldg TDZE 34 Apt Elev 48	5999
----------------------------------------	------------------------	-------------------------------------------------	-------------

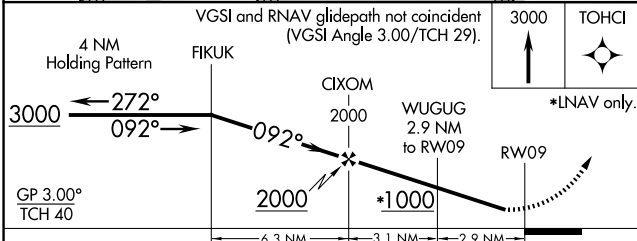
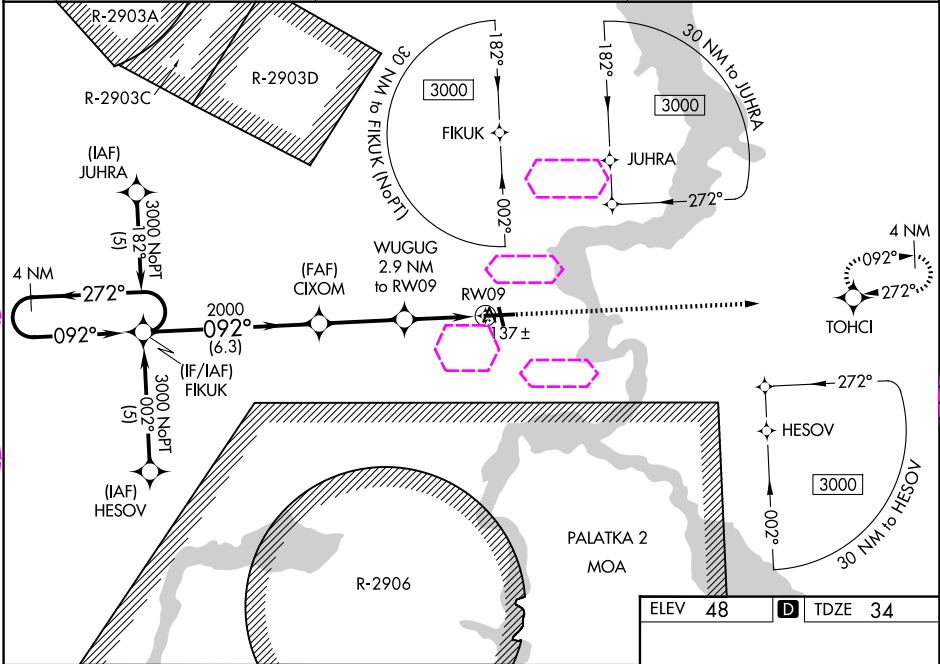
RNAV (GPS) RWY 9
PALATKA MUNI/LT KAY LARKIN FLD (28J)

RNP APCH.

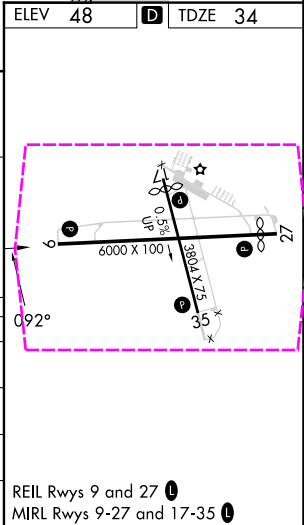
Baro-VNAV NA when using St Augustine altimeter setting. For uncompensated Baro-VNAV systems, LNAV/VNAV NA below -15°C (5°F) or above 49°C (120°F). Rwy 9 helicopter visibility reduction below $\frac{3}{4}$ SM NA. When local altimeter setting not received, use St Augustine altimeter setting and increase LPV DA all Cats to 379 feet, LNAV/VNAV DA all Cats to 457 feet, and all MDA 80 feet; increase LPV all Cats and LNAV Cats C/D visibility $\frac{1}{8}$ SM, and LNAV/VNAV all Cats and Circling Cat C/D visibility $\frac{1}{4}$ SM. Circling Rwy 17, 35 NA at night.

MISSED APPROACH:
Climb to 3000 direct
TOHCI and hold.

AWOS-3 119.925	JACKSONVILLE APP CON 118.175 338.25	UNICOM 122.8 (CTAF)
--------------------------	-----------------------------------------------	-------------------------------



CATEGORY	A	B	C	D
LPV DA		314-1	280 (300-1)	
LNAV/VNAV DA		392-1 $\frac{1}{4}$	358 (400-1 $\frac{1}{4}$)	
LNAV MDA	480-1 446 (500-1)	480-1 $\frac{3}{8}$ 446 (500-1 $\frac{3}{8}$)	480-1 $\frac{1}{2}$ 446 (500-1 $\frac{1}{2}$)	
CIRCLING	620-1 572 (600-1)	700-1 $\frac{3}{4}$ 652 (700-1 $\frac{3}{4}$)	700-2 652 (700-2)	



PALATKA, FLORIDA
Orig-D 19MAY22

29°40'N-81°41'W

PALATKA MUNI/LT KAY LARKIN FLD (28J)
RNAV (GPS) RWY 9