

PALATKA, FLORIDA

AL-677 (FAA)

24305

WAAS CH <b>99320</b> <b>W27A</b>	APP CRS <b>272°</b>	Rwy Idg <b>5549</b> TDZE <b>34</b> Apt Elev <b>48</b>
--	------------------------	---

# RNAV (GPS) RWY 27

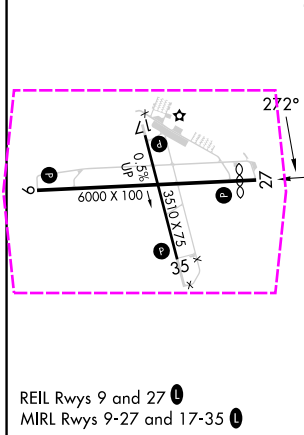
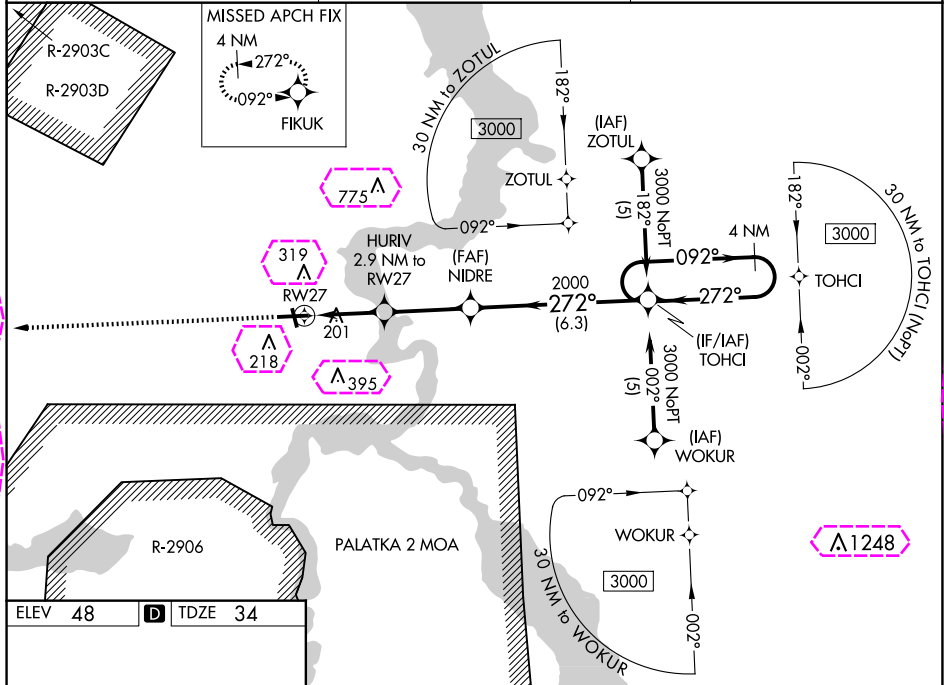
PALATKA MUNI/LT KAY LARKIN FLD (28J)




RNP APCH-GPS.

Baro-VNAV NA when using St. Augustine altimeter setting. For uncompensated Baro-VNAV systems, LNAV/VNAV NA below -15°C or above 54°C. Rwy 27 helicopter visibility reduction below ¼ SM NA. When local altimeter setting not received, use St Augustine altimeter setting and increase LPV DA to 419 feet and all visibilities ¼ SM. Increase LNAV/VNAV DA to 582 feet and all visibilities ¼ SM. Increase all MDAs 80 feet and LNAV visibility Cat C/D ¼ SM, and Circling visibility Cat C/D ¼ SM. Circling Rwy 17, 35 NA at night.

MISSED APPROACH: Climb to 3000 direct FIKUK and hold. Continue climb-in-hold to 3000.

AWOS-3 <b>119.925</b>	JACKSONVILLE APP CON <b>118.175 338.25</b>	UNICOM <b>122.8 (CTAF)</b>
--------------------------	---	-------------------------------



3000 ↑		FIKUK 		VGSI and RNAV glidepath not coincident (VGSI Angle 3.50/TCH 38).		4 NM Holding Pattern			
HURIV 2.9 NM to RW27		NIDRE 2000		TOHCI		092° → 3000 ← 272°			
1.1 NM to RW27 				272°		GP 3.00° TCH 40			
RW27		1000		2000					
1.1		1.9 NM		3.1 NM		6.3 NM			
CATEGORY		A		B		C		D	
LPV DA		354-7/8				320 (400-7/8)			
LNAV/ VNAV DA		517-13/8				483 (500-13/8)			
LNAV MDA		460-1 426 (500-1)		460-1 1/4 426 (500-1 1/4)		460-1 1/4 426 (500-1 1/4)			
CIRCLING		620-1 572 (600-1)		700-1 3/4 652 (700-1 3/4)		700-2 652 (700-2)			

PALATKA, FLORIDA  
Orig-D 15JUN23

PALATKA MUNI/LT KAY LARKIN FLD (28J)  
29°40'N-81°41'W  
**RNAV (GPS) RWY 27**

SE-3, 10 JUL 2025 to 07 AUG 2025

SE-3, 10 JUL 2025 to 07 AUG 2025

PALATKA, FLORIDA

AL-677 (FAA)

25219

WAAS CH <b>99320</b> <b>W27A</b>	APP CRS <b>272°</b>	Rwy Ldg <b>5549</b> TDZE <b>34</b> Apt Elev <b>48</b>
--	------------------------	---

RNAV (GPS) RWY 27

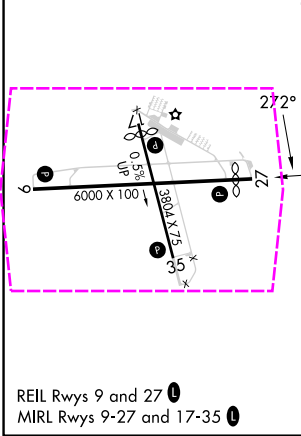
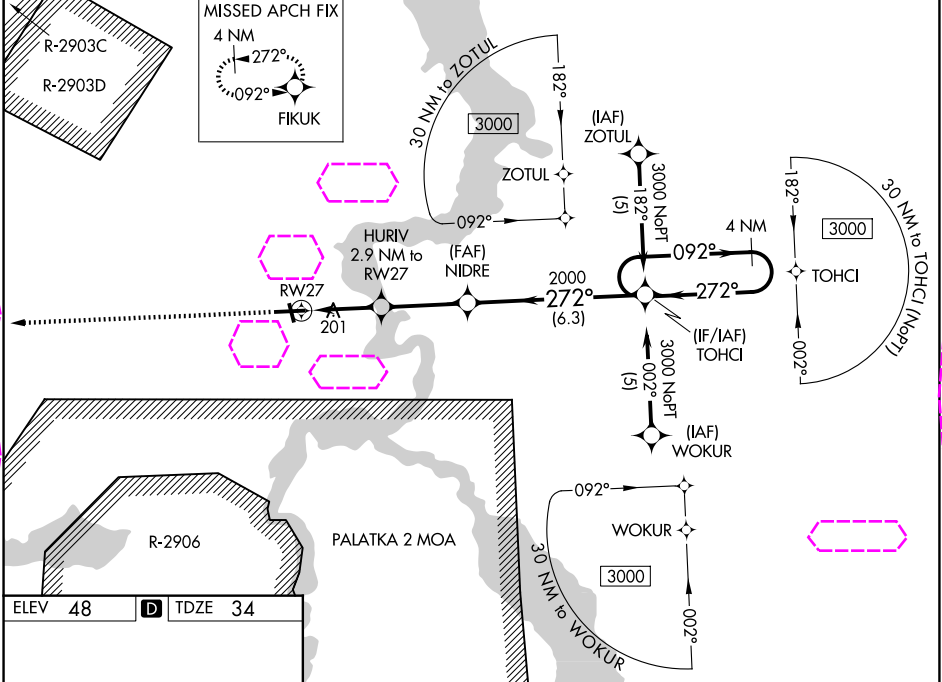
PALATKA MUNI/LT KAY LARKIN FLD (28J)




RNP APCH-GPS.

Baro-VNAV NA when using St. Augustine altimeter setting. For uncompensated Baro-VNAV systems, LNAV/VNAV NA below -15°C or above 54°C. Rwy 27 helicopter visibility reduction below ¼ SM NA. When local altimeter setting not received, use St Augustine altimeter setting and increase LPV DA to 419 feet and all visibilities ¼ SM. Increase LNAV/VNAV DA to 582 feet and all visibilities ¼ SM. Increase all MDAs 80 feet and LNAV visibility Cat C/D ¼ SM, and Circling visibility Cat C/D ¼ SM. Circling Rwy 17, 35 NA at night.

MISSED APPROACH: Climb to 3000 direct FIKUK and hold. Continue climb-in-hold to 3000.

AWOS-3 <b>119.925</b>	JACKSONVILLE APP CON <b>118.175 338.25</b>	UNICOM <b>122.8 (CTAF) 0</b>
--------------------------	---	---------------------------------



3000 ↑		FIKUK 		VGSI and RNAV glidepath not coincident (VGSI Angle 3.50/TCH 38).		TOHCI 4 NM Holding Pattern			
		1.1 NM to RW27 ↓		HURIV 2.9 NM to RW27		NIDRE 2000			
		1.1		1.9 NM		3.1 NM			
→		1000		2000		272°			
						092° → 3000 ← 272°			
						GP 3.00° TCH 40			
CATEGORY		A		B		C		D	
LPV DA		354-7/8				320 (400-7/8)			
LNAV/VNAV DA		517-13/8				483 (500-13/8)			
LNAV MDA		460-1		426 (500-1)		460-1 1/4 426 (500-1 1/4)		460-1 1/4 426 (500-1 1/4)	
CIRCLING		620-1		572 (600-1)		700-1 3/4 652 (700-1 3/4)		700-2 652 (700-2)	

PALATKA, FLORIDA  
Orig-D 15JUN23

29°40'N-81°41'W

PALATKA MUNI/LT KAY LARKIN FLD (28J)

RNAV (GPS) RWY 27