

GLENS FALLS, NEW YORK

AL-673 (FAA)

24249

APP CRS	Rwy Idg	3999
305°	TDZE	325
	Apt Elev	328

RNAV (GPS) RWY 30

FLOYD BENNETT MEML (GFL)

RNP APCH.

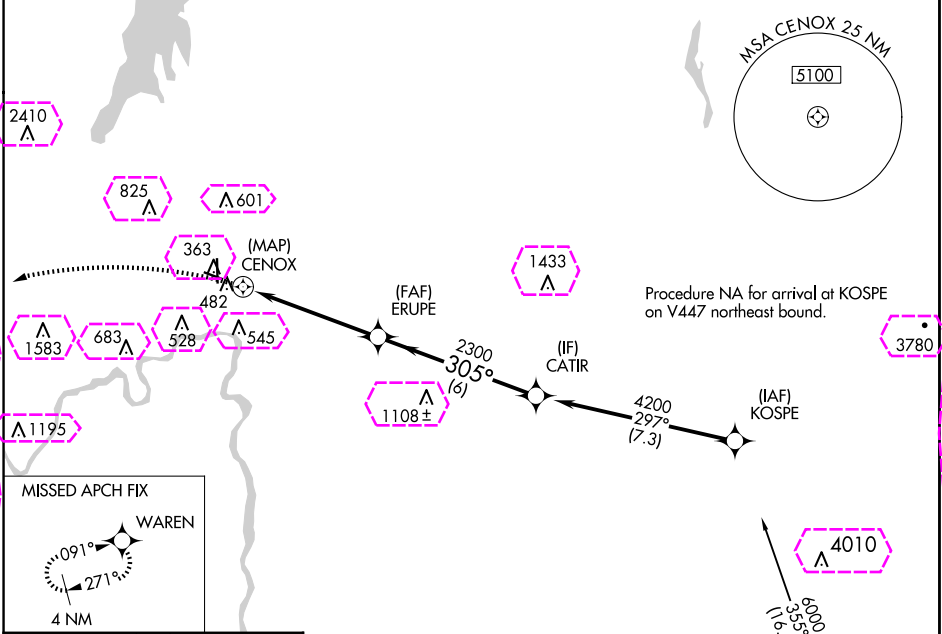
Circling Rwy 12 NA at night.

Rwy 30 helicopter visibility reduction below 3/4 SM NA.

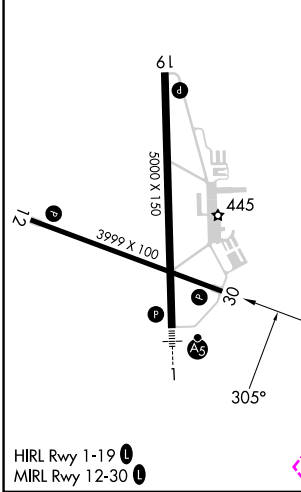
-19°C

MISSED APPROACH: Climbing left turn to 4000 direct WARREN and hold.

ASOS 119.925	ALBANY APP CON 132.825 307.2	UNICOM 123.0 (CTAF) 0
-----------------	---------------------------------	--------------------------



ELEV 328	D	TDZE 325
----------	---	----------



4000 WARREN Visual Segment - Obstacles.				
CENOX 1.2 NM to CENOX				
ERUPE 2300				
CATIR 4200				
0.8 1.2 NM 4 NM 6 NM				
CATEGORY	A	B	C	D
LNAV MDA	1020-1	695 (700-1)	1020-2 695 (700-2)	1020-2 1/4 695 (700-2 1/4)
CIRCLING	1020-1	692 (700-1)	1020-2 692 (700-2)	1960-3 1632 (1700-3)

NE-2, 10 JUL 2025 to 07 AUG 2025

NE-2, 10 JUL 2025 to 07 AUG 2025

GLENS FALLS, NEW YORK

AL-673 (FAA)

25219

APP CRS	Rwy Ldg	3999
305°	TDZE	325
	Apt Elev	328

RNAV (GPS) RWY 30

FLOYD BENNETT MEML (GFL)

RNP APCH.

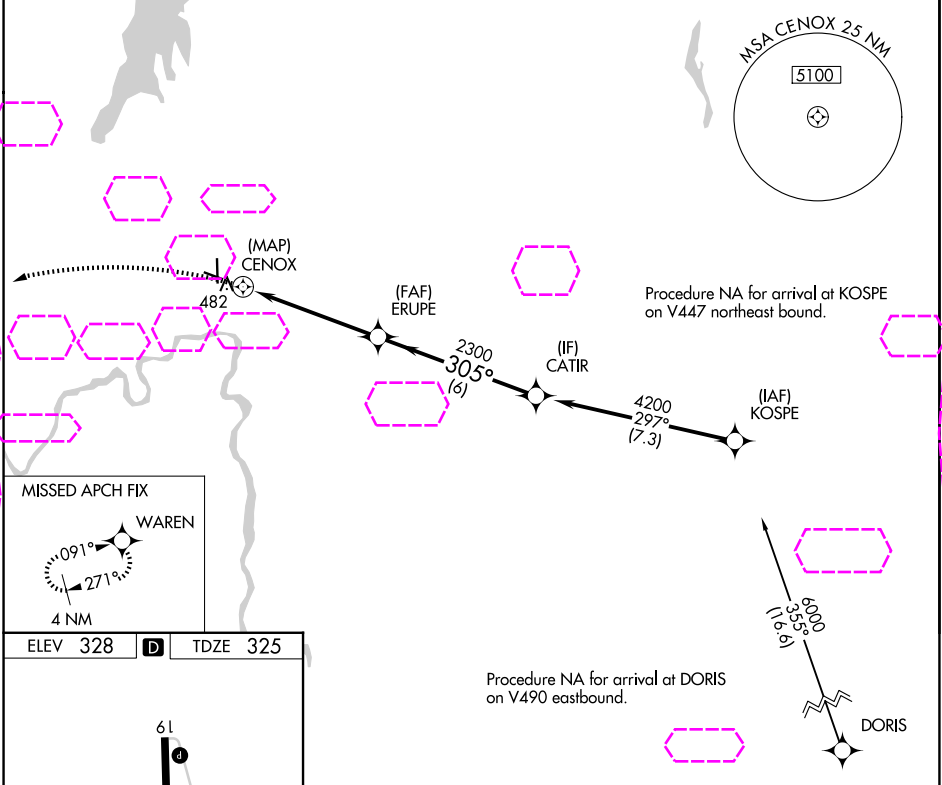
Circling Rwy 12 NA at night.

-18°C

Rwy 30 helicopter visibility reduction below 3/4 SM NA.

MISSED APPROACH: Climbing left turn to 4000 direct WARREN and hold.

ASOS 119.925	ALBANY APP CON 132.825 307.2	UNICOM 123.0 (CTAF) 0
-----------------	---------------------------------	--------------------------



4000

WARREN

Visual Segment - Obstacles.

CATEGORY	A	B	C	D
LNAV MDA	1020-1	695 (700-1)	1020-2 695 (700-2)	1020-2¼ 695 (700-2¼)
CIRCLING	1020-1	692 (700-1)	1020-2 692 (700-2)	1960-3 1632 (1700-3)

4000

WARREN

Visual Segment - Obstacles.

CATEGORY	A	B	C	D
LNAV MDA	1020-1	695 (700-1)	1020-2 695 (700-2)	1020-2¼ 695 (700-2¼)
CIRCLING	1020-1	692 (700-1)	1020-2 692 (700-2)	1960-3 1632 (1700-3)

4000

WARREN

Visual Segment - Obstacles.

CATEGORY	A	B	C	D
LNAV MDA	1020-1	695 (700-1)	1020-2 695 (700-2)	1020-2¼ 695 (700-2¼)
CIRCLING	1020-1	692 (700-1)	1020-2 692 (700-2)	1960-3 1632 (1700-3)

4000

WARREN

Visual Segment - Obstacles.

CATEGORY	A	B	C	D
LNAV MDA	1020-1	695 (700-1)	1020-2 695 (700-2)	1020-2¼ 695 (700-2¼)
CIRCLING	1020-1	692 (700-1)	1020-2 692 (700-2)	1960-3 1632 (1700-3)

4000

WARREN

Visual Segment - Obstacles.

CATEGORY	A	B	C	D
LNAV MDA	1020-1	695 (700-1)	1020-2 695 (700-2)	1020-2¼ 695 (700-2¼)
CIRCLING	1020-1	692 (700-1)	1020-2 692 (700-2)	1960-3 1632 (1700-3)

4000

WARREN

Visual Segment - Obstacles.

CATEGORY	A	B	C	D
LNAV MDA	1020-1	695 (700-1)	1020-2 695 (700-2)	1020-2¼ 695 (700-2¼)
CIRCLING	1020-1	692 (700-1)	1020-2 692 (700-2)	1960-3 1632 (1700-3)

4000

WARREN

Visual Segment - Obstacles.

CATEGORY	A	B	C	D
LNAV MDA	1020-1	695 (700-1)	1020-2 695 (700-2)	1020-2¼ 695 (700-2¼)
CIRCLING	1020-1	692 (700-1)	1020-2 692 (700-2)	1960-3 1632 (1700-3)

4000

WARREN

Visual Segment - Obstacles.

CATEGORY	A	B	C	D
LNAV MDA	1020-1	695 (700-1)	1020-2 695 (700-2)	1020-2¼ 695 (700-2¼)
CIRCLING	1020-1	692 (700-1)	1020-2 692 (700-2)	1960-3 1632 (1700-3)

4000

WARREN

Visual Segment - Obstacles.

CATEGORY	A	B	C	D
LNAV MDA	1020-1	695 (700-1)	1020-2 695 (700-2)	1020-2¼ 695 (700-2¼)
CIRCLING	1020-1	692 (700-1)	1020-2 692 (700-2)	1960-3 1632 (1700-3)

4000

WARREN

Visual Segment - Obstacles.

CATEGORY	A	B	C	D
LNAV MDA	1020-1	695 (700-1)	1020-2 695 (700-2)	1020-2¼ 695 (700-2¼)
CIRCLING	1020-1	692 (700-1)	1020-2 692 (700-2)	1960-3 1632 (1700-3)

4000

WARREN

Visual Segment - Obstacles.

CATEGORY	A	B	C	D
LNAV MDA	1020-1	695 (700-1)	1020-2 695 (700-2)	1020-2¼ 695 (700-2¼)
CIRCLING	1020-1	692 (700-1)	1020-2 692 (700-2)	1960-3 1632 (1700-3)

4000

WARREN

Visual Segment - Obstacles.

CATEGORY	A	B	C	D
LNAV MDA	1020-1	695 (700-1)	1020-2 695 (700-2)	1020-2¼ 695 (700-2¼)
CIRCLING	1020-1	692 (700-1)	1020-2 692 (700-2)	1960-3 1632 (1700-3)

4000

WARREN

Visual Segment - Obstacles.

CATEGORY	A	B	C	D
LNAV MDA	1020-1	695 (700-1)	1020-2 695 (700-2)	1020-2¼ 695 (700-2¼)
CIRCLING	1020-1	692 (700-1)	1020-2 692 (700-2)	1960-3 1632 (1700-3)

4000

WARREN

Visual Segment - Obstacles.

CATEGORY	A	B	C	D
LNAV MDA	1020-1	695 (700-1)	1020-2 695 (700-2)	1020-2¼ 695 (700-2¼)
CIRCLING	1020-1	692 (700-1)	1020-2 692 (700-2)	1960-3 1632 (1700-3)

4000

WARREN

Visual Segment - Obstacles.

CATEGORY	A	B	C	D
LNAV MDA	1020-1	695 (700-1)	1020-2 695 (700-2)	1020-2¼ 695 (700-2¼)
CIRCLING	1020-1	692 (700-1)	1020-2 692 (700-2)	1960-3 1632 (1700-3)

4000

WARREN

Visual Segment - Obstacles.

CATEGORY	A	B	C	D
LNAV MDA	1020-1	695 (700-1)	1020-2 695 (700-2)	1020-2¼ 695 (700-2¼)
CIRCLING	1020-1	692 (700-1)	1020-2 692 (700-2)	1960-3 1632 (1700-3)

4000

WARREN

Visual Segment - Obstacles.

CATEGORY	A	B	C	D
LNAV MDA	1020-1	695 (700-1)	1020-2 695 (700-2)	1020-2¼ 695 (700-2¼)
CIRCLING	1020-1	692 (700-1)	1020-2 692 (700-2)	1960-3 1632 (1700-3)

4000

WARREN

Visual Segment - Obstacles.

CATEGORY	A	B	C	D
LNAV MDA	1020-1	695 (700-1)	1020-2 695 (700-2)	1020-2¼ 695 (700-2¼)
CIRCLING	1020-1	692 (700-1)	1020-2 692 (700-2)	1960-3 1632 (1700-3)

4000

WARREN

Visual Segment - Obstacles.

CATEGORY	A	B	C	D
LNAV MDA	1020-1	695 (700-1)	1020-2 695 (700-2)	1020-2¼ 695 (700-2¼)
CIRCLING	1020-1	692 (700-1)	1020-2 692 (700-2)	1960-3 1632 (1700-3)

4000

WARREN

Visual Segment - Obstacles.

CATEGORY	A	B	C	D
LNAV MDA	1020-1	695 (700-1)	1020-2 695 (700-2)	1020-2¼ 695 (700-2¼)
CIRCLING	1020-1	692 (700-1)	1020-2 692 (700-2)	1960-3 1632 (1700-3)

4000

WARREN

Visual Segment - Obstacles.

CATEGORY	A	B	C	D
LNAV MDA	1020-1	695 (700-1)	1020-2 695 (700-2)	1020-2¼ 695 (700-2¼)
CIRCLING	1020-1	692 (700-1)	1020-2 692 (700-2)	1960-3 1632 (1700-3)

4000

WARREN

Visual Segment - Obstacles.

CATEGORY	A	B	C	D
LNAV MDA	1020-1	695 (700-1)	1020-2 695 (700-2)	1020-2¼ 695 (700-2¼)
CIRCLING	1020-1	692 (700-1)	1020-2 692 (700-2)	1960-3 1632 (1700-3)

4000

WARREN

Visual Segment - Obstacles.

CATEGORY	A	B	C	D
LNAV MDA	1020-1	695 (700-1)	1020-2 695 (700-2)	1020-2¼ 695 (700-2¼)
CIRCLING	1020-1	692 (700-1)	1020-2 692 (700-2)	1960-3 1632 (1700-3)

4000

WARREN

Visual Segment - Obstacles.

CATEGORY	A	B	C	D
LNAV MDA	1020-1	695 (700-1)	1020-2 695 (700-2)	1020-2¼ 695 (700-2¼)
CIRCLING	1020-1	692 (700-1)	1020-2 692 (700-2)	1960-3 1632 (1700-3)

4000

WARREN

Visual Segment - Obstacles.

CATEGORY	A	B	C	D
LNAV MDA	1020-1	695 (700-1)	1020-2 695 (700-2)	1020-2¼ 695 (700-2¼)
CIRCLING	1020-1	692 (700-1)	1020-2 692 (700-2)	1960-3 1632 (1700-3)

4000

WARREN

Visual Segment - Obstacles.

CATEGORY	A	B	C	D
LNAV MDA	1020-1	695 (700-1)	1020-2 695 (700-2)	1020-2¼ 695 (700-2¼)
CIRCLING	1020-1	692 (700-1)	1020-2 692 (700-2)	1960-3 1632 (1700-3)

4000

WARREN

Visual Segment - Obstacles.

CATEGORY	A	B	C	D
LNAV MDA	1020-1	695 (700-1)	1020-2 695 (700-2)	1020-2¼ 695 (700-2¼)
CIRCLING	1020-1	692 (700-1)	1020-2 692 (700-2)	1960-3 1632 (1700-3)

4000

WARREN

Visual Segment - Obstacles.

CATEGORY	A	B	C	D
LNAV MDA	1020-1	695 (700-1)	1020-2 695 (700-2)	1020-2¼ 695 (700-2¼)
CIRCLING	1020-1	692 (700-1)	1020-2 692 (700-2)	1960-3 1632 (1700-3)

4000

WARREN

Visual Segment - Obstacles.

CATEGORY	A	B	C	D
LNAV MDA	1020-1	695 (700-1)	1020-2 695 (700-2)	1020-2¼ 695 (700-2¼)
CIRCLING	1020-1	692 (700-1)	1020-2 692 (700-2)	1960-3 1632 (1700-3)

4000

WARREN

Visual Segment - Obstacles.

CATEGORY	A	B	C	D
LNAV MDA	1020-1	695 (700-1)	1020-2 695 (700-2)	1020-2¼ 695 (700-2¼)
CIRCLING	1020-1	692 (700-1)	1020-2 692 (700-2)	1960-3 1632 (1700-3)

4000

WARREN

</

GLENS FALLS, NEW YORK
Orig-C 15AUG19

43°20'N-73°37"W

FLOYD BENNETT MEML (GFL) RNAV (GPS) RWY 30

NE-2, 07 AUG 2025 to 04 SEP 2025

NE-2, 07 AUG 2025 to 04 SEP 2025