

RNAV (GPS) RWY 1

GLENS FALLS, NEW YORK

AL-673 (FAA)

25219

WAAS CH <b>87118</b> <b>W01A</b>	APP CRS <b>012°</b>	Rwy Ldg TDZE Apt Elev <b>5000</b> <b>324</b> <b>328</b>
--	------------------------	--

# RNAV (GPS) RWY 1

FLOYD BENNETT MEML (GFL)

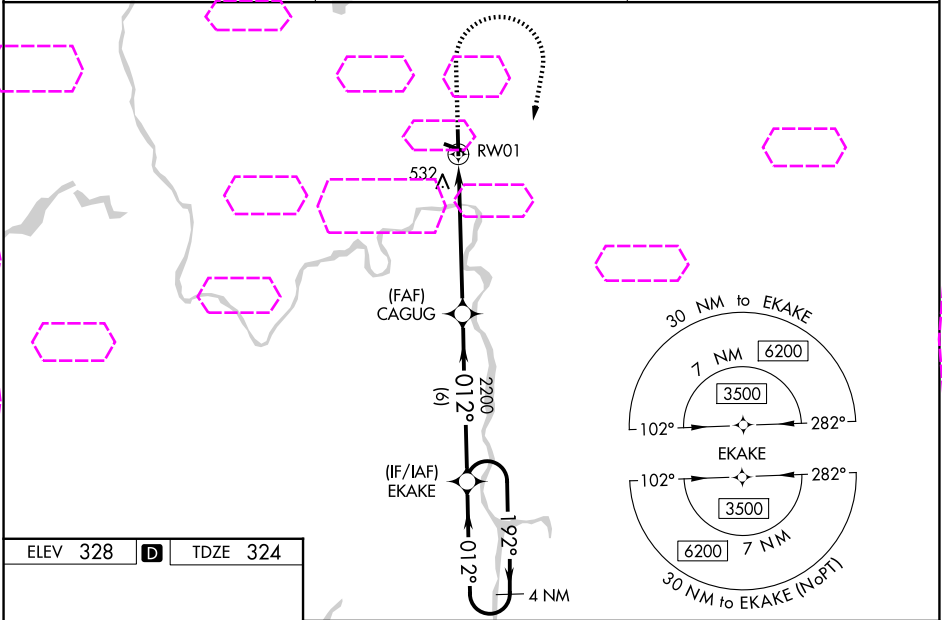
**⚠** For uncompensated Baro-VNAV systems, LNAV/VNAV NA below -18°C (0°F) or above 54°C (130°F). DME/DME RNP-0.3 NA. When local altimeter setting not received use Albany altimeter setting and increase all DA 91 feet and all MDA 100 feet; increase LNAV/VNAV all Cats ½ SM, LNAV Cat C/D and Circling Cat C visibility ¼ SM. For inoperative ALS when using Albany altimeter setting, increase LPV all Cats visibility to ½ SM. Baro-VNAV and VDP NA when using Albany altimeter setting. Circling Rwy 12, 30 NA at night. Rwy 12, 30 helicopter visibility reduction below 1 SM NA.

**❄** -18°C

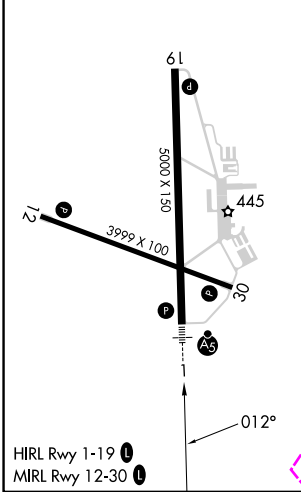
MALSR

MISSED APPROACH:  
Climb to 900 then climbing right turn to 3500 direct EKAKE and hold.

ASOS <b>119.925</b>	ALBANY APP CON <b>132.825 307.2</b>	UNICOM <b>123.0 (CTAF) 0</b>
------------------------	--	---------------------------------



ELEV 328	<b>D</b>	TDZE 324
----------	----------	----------



900	3500	EKAKE			
↑	↗	✦			
*LNAV only.					
<p>*1.3 NM to RW01</p> <p>CAGUG 2200</p> <p>012°</p> <p>192° → 3500</p> <p>← 012°</p> <p>GP 3.00° TCH 53</p> <p>1.3 NM 4.4 NM 6 NM</p>					
CATEGORY	A		B	C	D
LPV DA	524-½		200 (200-½)		
LNAV/VNAV DA	835-¼		511 (600-¼)		
LNAV MDA	800-½	476 (500-½)	800-1	476 (500-1)	
CIRCLING	840-1 512 (600-1)	860-1 532 (600-1)	940-¾ 612 (700-¾)	1960-3 1632 (1700-3)	

GLENS FALLS, NEW YORK  
Amdt 2 05JAN17

43°20'N-73°37'W

FLOYD BENNETT MEML (GFL)  
**RNAV (GPS) RWY 1**

NE-2, 07 AUG 2025 to 04 SEP 2025

NE-2, 07 AUG 2025 to 04 SEP 2025