

GLENS FALLS, NEW YORK

AL-673 (FAA)

24249

APP CRS	Rwy Idg	5000
177°	TDZE	327
	Apt Elev	328

RNAV (GPS) RWY 19

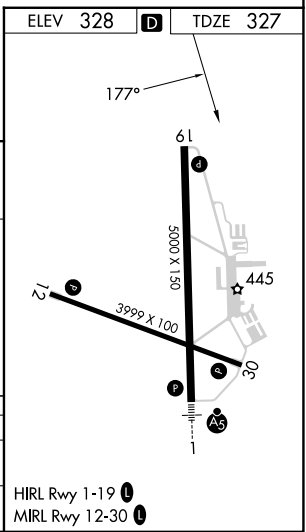
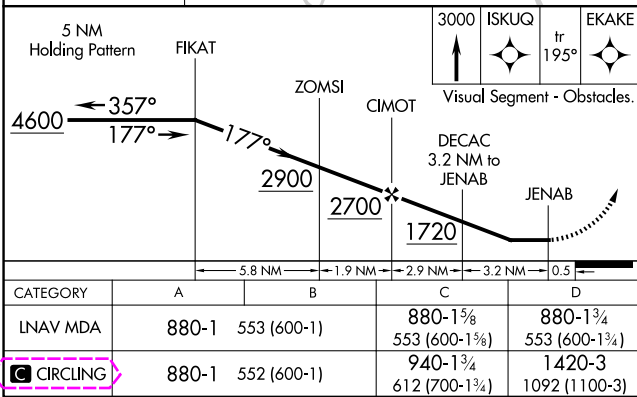
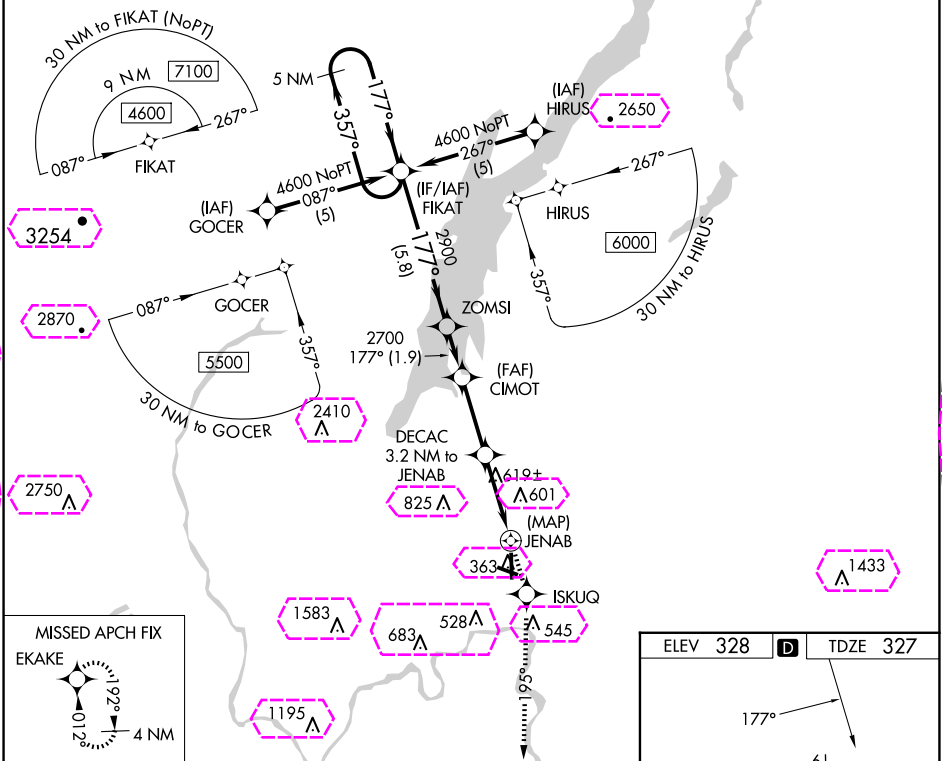
FLOYD BENNETT MEML (GFL)

RNP APCH.

Circling NA for Cat D NW of Rwy 12 and 19. Rwy 19 helicopter visibility reduction below 3/4 SM NA. Circling Rwy 12, 30 NA at night.

MISSED APPROACH: Climb to 3000 direct ISKUQ and on track 195° to EKAKE and hold.

ASOS 119.925	ALBANY APP CON 132.825 307.2	UNICOM 123.0 (CTAF) 0
-----------------	---------------------------------	--------------------------



CATEGORY	A	B	C	D
LNNAV MDA	880-1	553 (600-1)	880-1 5/8 553 (600-1 5/8)	880-1 3/4 553 (600-1 3/4)
CIRCLING	880-1	552 (600-1)	940-1 3/4 612 (700-1 3/4)	1420-3 1092 (1100-3)

HIRL Rwy 1-19 0
MIRL Rwy 12-30 0

GLENS FALLS, NEW YORK
Amdt 1C 08NOV18

43°20'N-73°37'W

FLOYD BENNETT MEML (GFL)

RNAV (GPS) RWY 19

NE-2, 10 JUL 2025 to 07 AUG 2025

NE-2, 10 JUL 2025 to 07 AUG 2025

APP CRS 177°	Rwy Ldg	5000
	TDZE	327
	Apt Elev	328

RNAV (GPS) RWY 19

FLOYD BENNETT MEML (GFL)

RNP APCH.



Circling NA for Cat D NW of Rwy 12 and 19. Rwy 19 helicopter visibility reduction below $\frac{3}{4}$ SM NA. Circling Rwy 12, 30 NA at night.

MISSED APPROACH: Climb to 3000 direct ISKUQ and on track 195° to EKAKE and hold.

ASOS

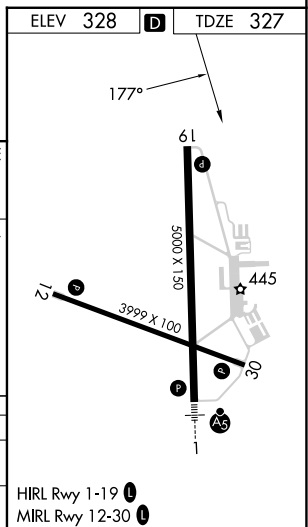
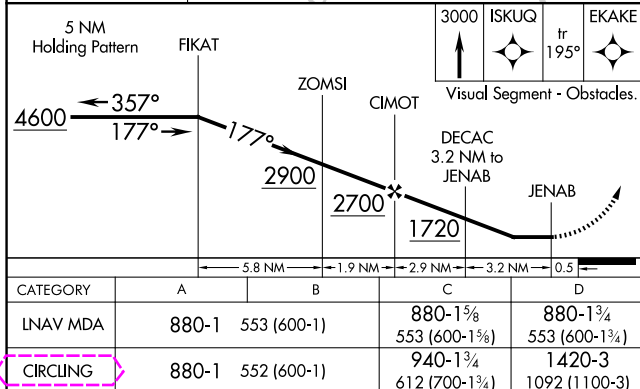
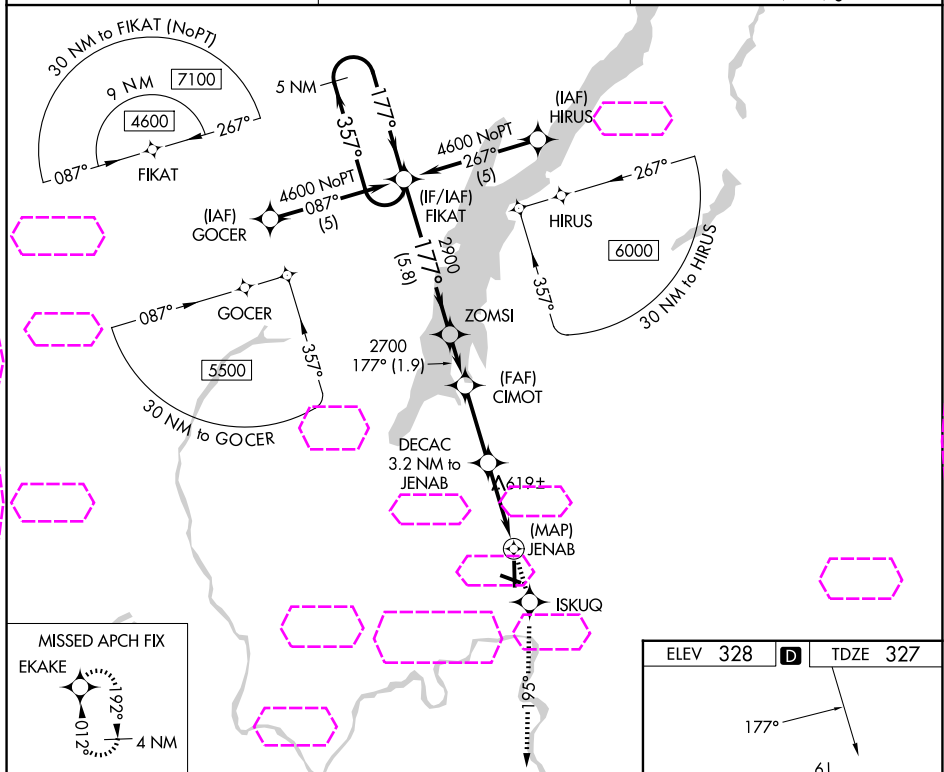
119.925

ALBANY APP CON

132.825 307.2

UNICOM

123.0 (CTAF) L



GLENS FALLS, NEW YORK

Amdt 1C 08NOV18

43°20'N-73°37'W

FLOYD BENNETT MEML (GFL)

RNAV (GPS) RWY 19

NE-2, 07 AUG 2025 to 04 SEP 2025