

GLENS FALLS, NEW YORK

AL-673 (FAA)

24249

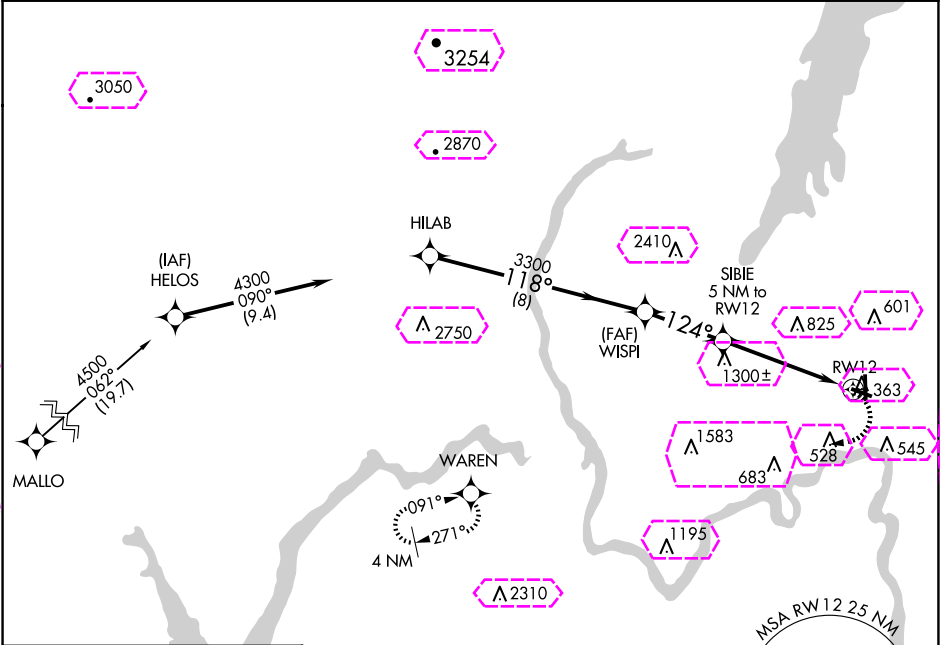
APP CRS	Rwy Idg	3999
124°	TDZE	328
	Apt Elev	328

RNAV (GPS) RWY 12

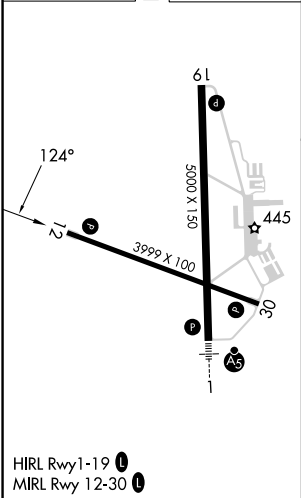
FLOYD BENNETT MEML (GFL)

<p>T NA * 19°C</p>	DME/DME RNP-0.3 NA. Helicopter visibility reduction below 1 SM NA. Night landing: Rwy 12, 30 NA.	MISSED APPROACH: Climbing right turn to 4000 direct to WARREN WP and hold.
--------------------------------------	--	--

ASOS 119.925	ALBANY APP CON 132.825 307.2	UNICOM 123.0 (CTAF) 0
-----------------	---------------------------------	--------------------------



ELEV 328	D	TDZE 328
----------	----------	----------



CATEGORY	A	B	C	D	
LNAV MDA	1560-1¼ 1232 (1300-1¼)	1560-1½ 1232 (1300-1½)	1560-3	1232 (1300-3)	
CIRCLING	1560-1¼ 1232 (1300-1¼)	1560-1½ 1232 (1300-1½)	1560-3	1232 (1300-3)	

GLENS FALLS, NEW YORK
Orig-A 10DEC15

43°20'N-73°37"W

FLOYD BENNETT MEML (GFL)
RNAV (GPS) RWY 12

GLENS FALLS, NEW YORK

AL-673 (FAA)

25219

APP CRS **124°** Rwy Ldg **3999**
 TDZE **328**
 Apt Elev **328**

RNAV (GPS) RWY 12

FLOYD BENNETT MEML (GFL)



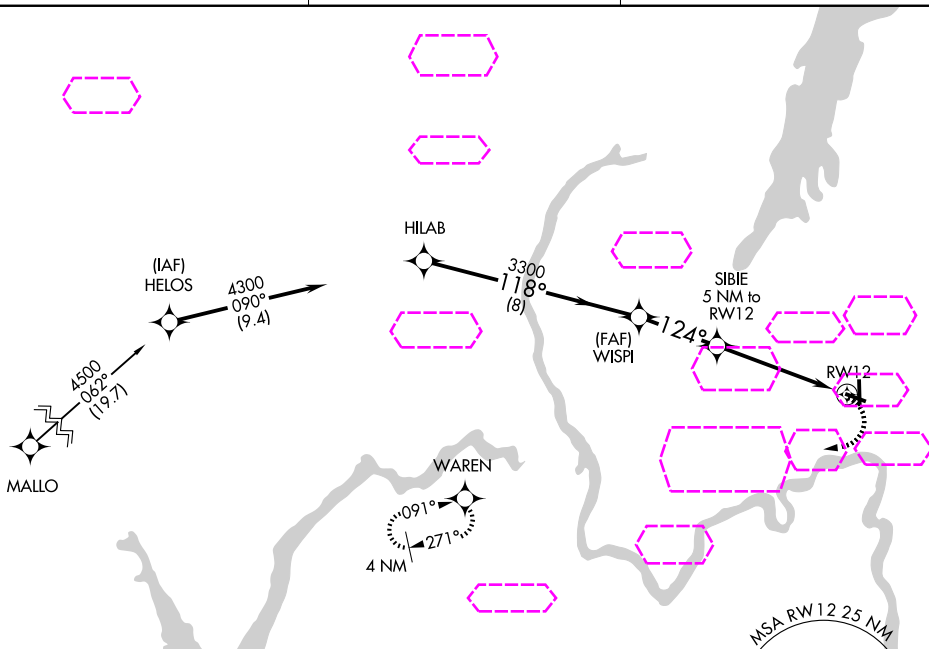
DME/DME RNP-0.3 NA. Helicopter visibility reduction below 1 SM NA. Night landing: Rwy 12, 30 NA.

MISSED APPROACH: Climbing right turn to 4000 direct to WARREN WP and hold.

ASOS
119.925

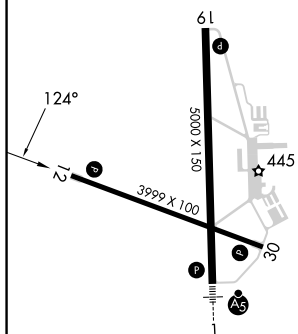
ALBANY APP CON
132.825 307.2

UNICOM
123.0 (CTAF) 0

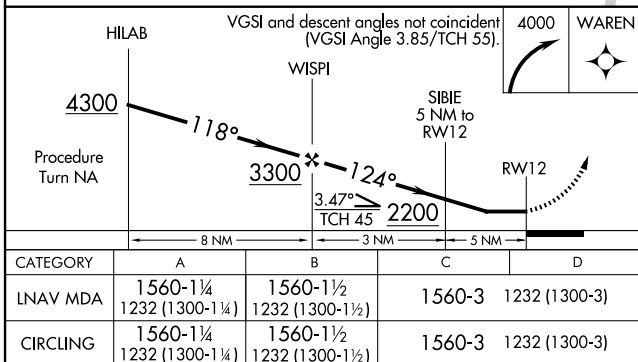


ELEV 328

D TDZE 328



HIRL Rwy 1-19 **0**
 MIRL Rwy 12-30 **0**



GLENS FALLS, NEW YORK

Orig-A 10DEC15

43°20'N-73°37"W

FLOYD BENNETT MEML (GFL)

RNAV (GPS) RWY 12

NE-2, 07 AUG 2025 to 04 SEP 2025

NE-2, 07 AUG 2025 to 04 SEP 2025