

GLENDS FALLS, NEW YORK

AL-673 (FAA)

24249

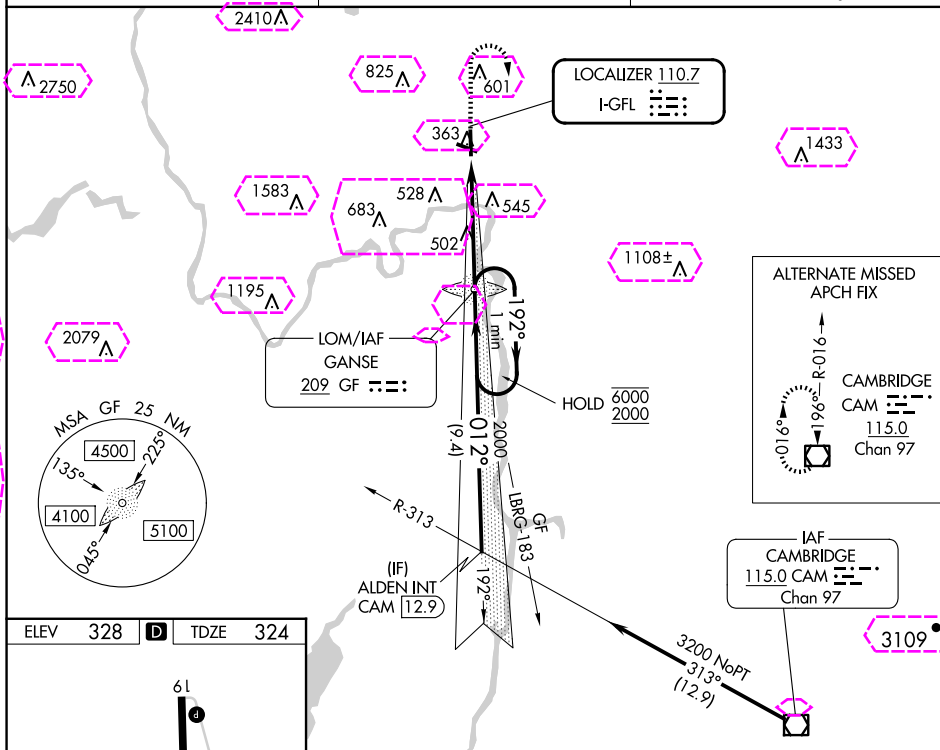
LOC I-GFL <b>110.7</b>	APP CRS <b>012°</b>	Rwy Idg <b>5000</b>
	TDZE <b>324</b>	
	Apt Elev <b>328</b>	

# ILS or LOC RWY 1

FLOYD BENNETT MEML (GFL)

ADF required.	MAISR 	MISSED APPROACH: Climb to 900 then climbing right turn to 2100 direct GANSE LOM and hold.
Circling NA for Cat D north of Rwy 12 and 19. Circling Rwy 12, 30 NA at night. For inop ALS, increase S-LOC 1 Cat C/D visibility to 1 3/8 SM.		

ASOS <b>119.925</b>	ALBANY APP CON <b>132.825 307.2</b>	UNICOM <b>123.0 (CTAF) 0</b>
------------------------	--	---------------------------------



ELEV 328	<b>D</b>	TDZE 324
HIRL Rwy 1-19 MIRL Rwy 12-30		
FAF to MAP 4.8 NM		
Knots	60	90 120 150 180
Min:Sec	4:48	3:12 2:24 1:55 1:36

900	2100	GF	GANSE LOM	One Minute Holding Pattern
CATEGORY	A	B	C	D
S-ILS 1	524-1/2 200 (200-1/2)			
S-LOC 1	820-1/2 496 (500-1/2)		820-1 496 (500-1)	
CIRCLING	840-1 512 (600-1)	860-1 532 (600-1)	940-1 3/4 612 (700-1 3/4)	1460-3 1132 (1200-3)

GLENDS FALLS, NEW YORK

Amdt 5A 31JAN19

43°20'N-73°37'W

FLOYD BENNETT MEML (GFL)

# ILS or LOC RWY 1

GLENS FALLS, NEW YORK

AL-673 (FAA)

25219

LOC I-GFL <b>110.7</b>	APP CRS <b>012°</b>	Rwy Ldg <b>5000</b>
	TDZE <b>324</b>	
	Apt Elev <b>328</b>	

# ILS or LOC RWY 1

FLOYD BENNETT MEML (GFL)

ADF required.

⚠

⚠

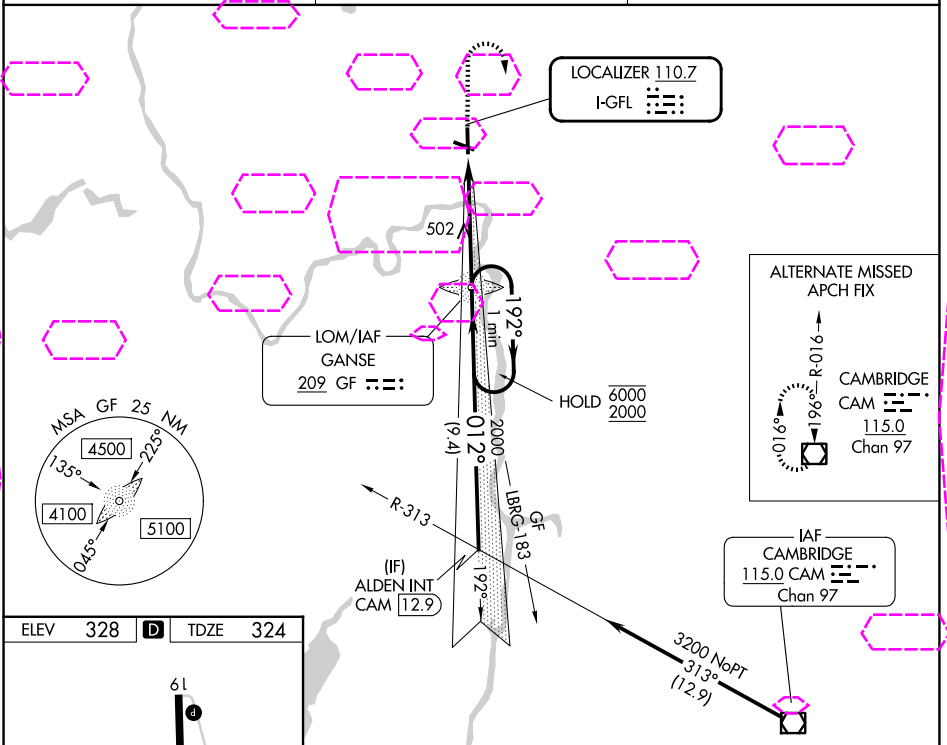
⚠

Circling NA for Cat D north of Rwy 12 and 19.  
Circling Rwy 12, 30 NA at night.  
For inop ALS, increase S-LOC 1 Cat C/D visibility to 1 3/8 SM.

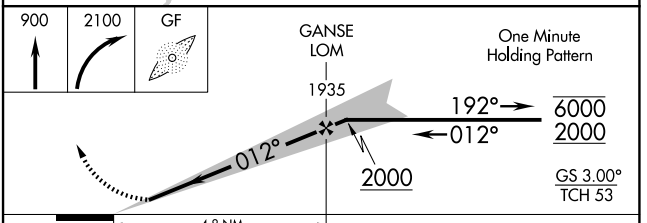
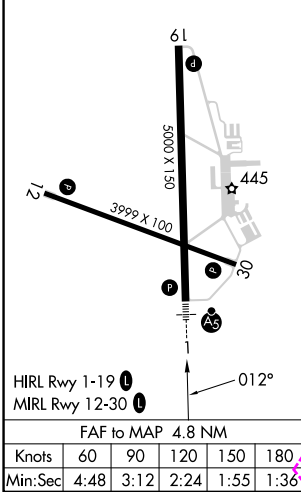
MAISR

MISSED APPROACH: Climb to 900 then climbing right turn to 2100 direct GANSE LOM and hold.

ASOS <b>119.925</b>	ALBANY APP CON <b>132.825 307.2</b>	UNICOM <b>123.0 (CTAF) 0</b>
------------------------	--	---------------------------------



ELEV 328	<b>D</b>	TDZE 324
----------	----------	----------



CATEGORY	A	B	C	D
S-ILS 1	524-1/2		200 (200-1/2)	
S-LOC 1	820-1/2 496 (500-1/2)		820-1 496 (500-1)	
CIRCUING	840-1 512 (600-1)	860-1 532 (600-1)	940-1 3/4 612 (700-1 3/4)	1460-3 1132 (1200-3)

GLENS FALLS, NEW YORK  
Amdt 5A 31JAN19

43°20'N-73°37'W

FLOYD BENNETT MEML (GFL)  
ILS or LOC RWY 1