

ATLANTIC CITY, NEW JERSEY


AL-669 (FAA)

25219

VORTAC ACY 117.15 Chan 118 (Y)	APP CRS 048°	Rwy Ldg TDZE Apt Elev 68 75
--	------------------------	---

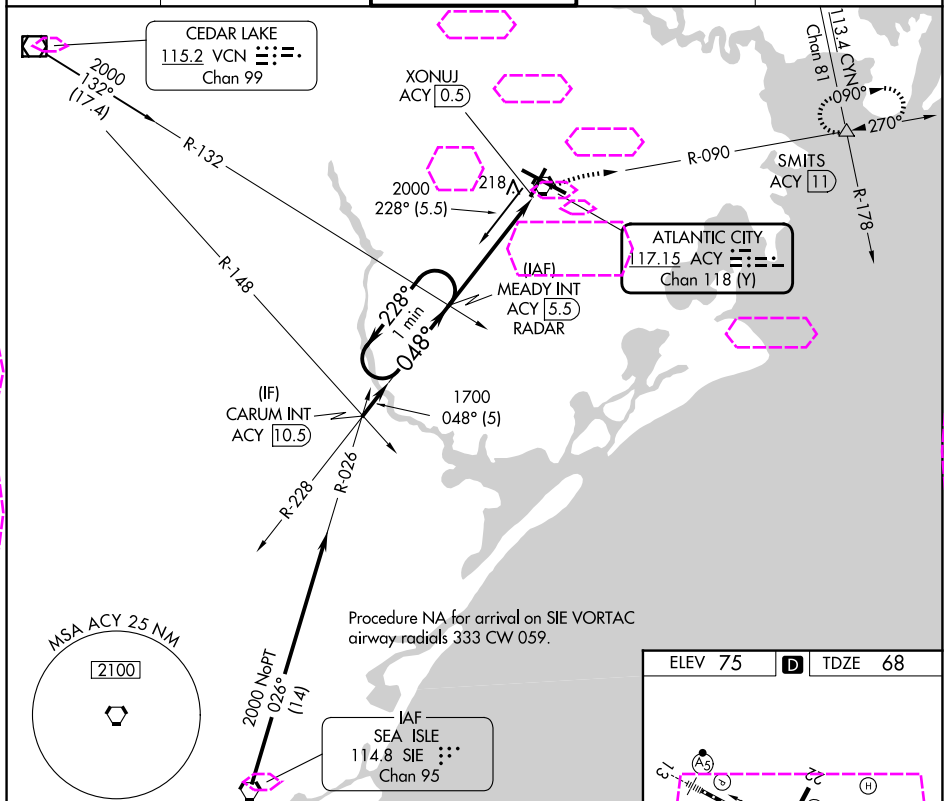
VOR RWY 4

ATLANTIC CITY INTL (ACY)

**Rwy 4** helicopter visibility reduction below $\frac{3}{4}$ SM NA.

MISSED APPROACH: Climbing right turn to 2000 on ACY VORTAC R-090 to SMITS INT/11 DME and hold.

ATIS 125.725 316.15	ATLANTIC CITY APP CON 124.6 327.125	ATLANTIC CITY TOWER 120.3 239.0	GND CON 121.9 284.6	CLNC DEL 127.85 353.775
-------------------------------	---	---	-------------------------------	-----------------------------------



One Minute Holding Pattern

MEADY INT ACY [5.5] RADAR

2000 228° 048°

1700 048°

3.05° TCH 47

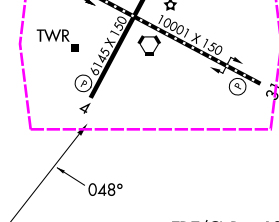
3.7 NM 1.2 NM

ACY [1.7] XONUJ ACY [0.5]

2000 ACY R-090 SMITS

CATEGORY	A	B	C	D	E
S-4	480-1	412 (500-1)	480-1¼	412 (500-1¼)	480-1½
CIRCLING	540-1 465 (500-1)	600-1 525 (600-1)	620-1½ 545 (600-1½)	640-2 565 (600-2)	760-2½ 685 (700-2½)

ELEV 75 **D** TDZE 68



TDZ/CL Rwy 13
HIRL Rwy 4-22 and 13-31
REIL Rwy 31

FAF to MAP 4.9 NM

Knots	60	90	120	150	180
Min:Sec	4:54	3:16	2:27	1:58	1:38

ATLANTIC CITY, NEW JERSEY
Amdt 15D 09SEP21

39°27'N-74°35'W

ATLANTIC CITY INTL (ACY)
VOR RWY 4

NE-2, 07 AUG 2025 to 04 SEP 2025

NE-2, 07 AUG 2025 to 04 SEP 2025