

ATLANTIC CITY, NEW JERSEY

AL-669 (FAA)

24305

VORTAC ACY	APP CRS	Rwy Idg	10001
117.15	302°	TDZE	64
Chan 118 (Y)		Apt Elev	75

# VOR RWY 31

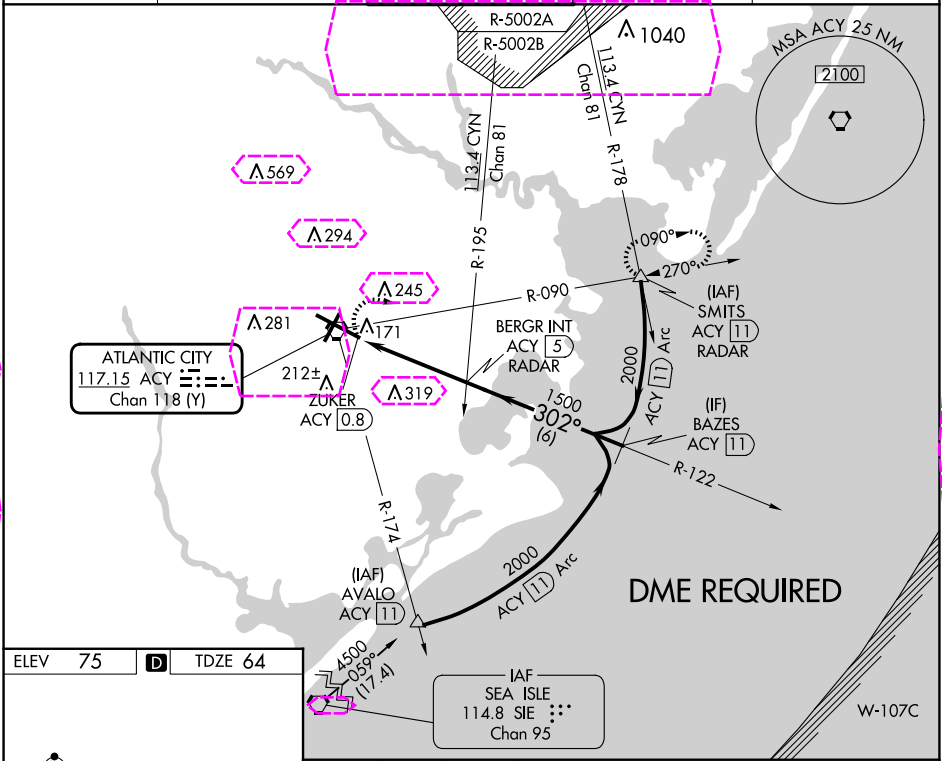
ATLANTIC CITY INTL (ACY)

**V**

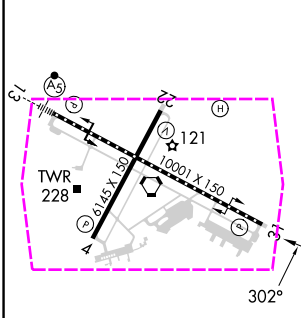
**A**

MISSED APPROACH: Climbing right turn to 2000 via heading 120° and ACY R-090 to SMITS INT/ACY 11 DME and hold.

ATIS	ATLANTIC CITY APP CON	ATLANTIC CITY TOWER	GND CON	CLNC DEL
125.725 316.15	124.6 327.125	120.3 239.0	121.9 284.6	127.85 353.775



ELEV 75	<b>D</b>	TDZE 64
---------	----------	---------



TDZ/CL Rwy 13	60	90	120	150	180
HIRL Rwy 4-22 and 13-31	4:12	2:48	2:06	1:41	1:24
REIL Rwy 31					
FAF to MAP 4.2 NM					

2000	ACY R-090	SMITS	VGSI and descent angles not coincident (VGSI Angle 3.00/TCH 69°).		
hdg 120°			BERGR INT ACY 5 RADAR	BAZES ACY 11	
	ZUKER ACY 0.8	ACY 1.9			
			≤ 3.12° TCH 52		
	1.1 NM	3.1 NM	6 NM		
CATEGORY	A	B	C	D	E
S-31	480/55	416 (500-1)	480/60	416 (500-1¼)	480-1½ 416 (500-1½)
CIRCLING	540-1 465 (500-1)	600-1 525 (600-1)	620-1½ 545 (600-1½)	640-2 565 (600-2)	760-2½ 685 (700-2½)

ATLANTIC CITY, NEW JERSEY  
Amdt 1D 11JUL24

39°27'N-74°35'W

ATLANTIC CITY INTL (ACY)  
**VOR RWY 31**

ATLANTIC CITY, NEW JERSEY

AL-669 (FAA)

25219

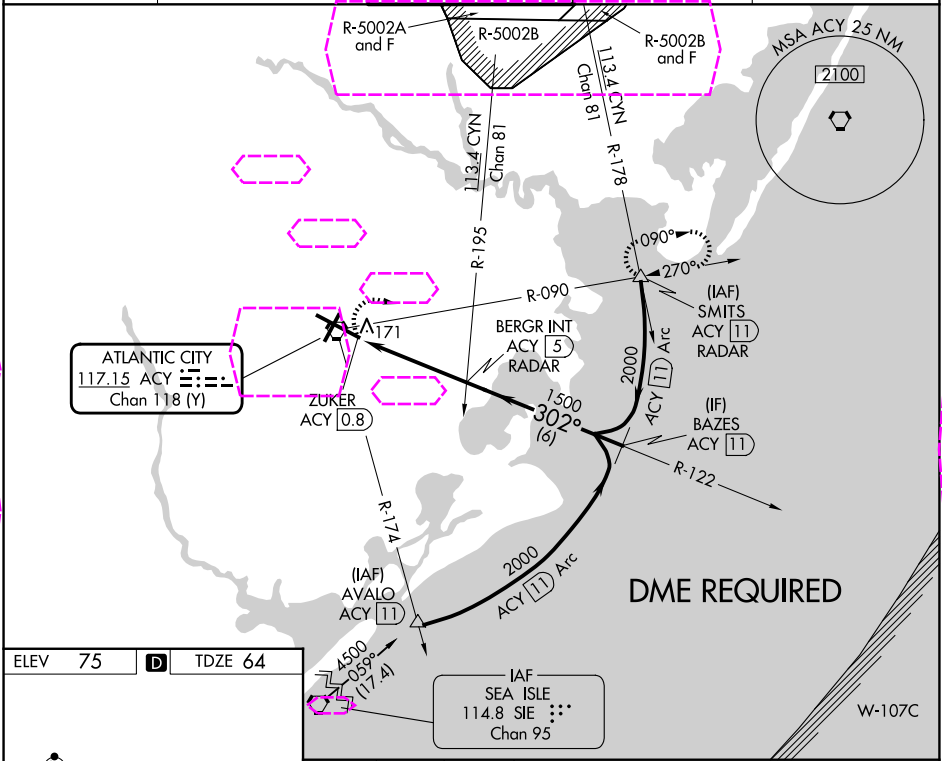
VORTAC ACY	APP CRS	Rwy Ldg	10001
117.15	302°	TDZE	64
Chan 118 (Y)		Apt Elev	75

# VOR RWY 31

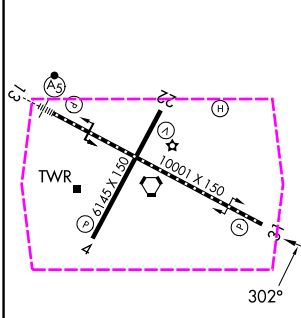
ATLANTIC CITY INTL (ACY)

MISSED APPROACH: Climbing right turn to 2000 via heading 120° and ACY R-090 to SMITS INT/ACY 11 DME and hold.


ATIS	ATLANTIC CITY APP CON	ATLANTIC CITY TOWER	GND CON	CLNC DEL
125.725 316.15	124.6 327.125	120.3 239.0	121.9 284.6	127.85 353.775



ELEV 75	D	TDZE 64
---------	---	---------



TDZ/CL Rwy 13	
HIRL Rwy 4-22 and 13-31	
REIL Rwy 31	
FAF to MAP 4.2 NM	
Knots	60 90 120 150 180
Min:Sec	4:12 2:48 2:06 1:41 1:24

2000 	ACY R-090	SMITS △	VGSI and descent angles not coincident (VGSI Angle 3.00/TCH 69).		
			BERGR INT ACY 5 RADAR	BAZES ACY 11	
		ZUKER ACY 0.8	ACY 1.9		
			3.12° TCH 52	302°	2000
		1.1 NM	3.1 NM	6 NM	Procedure Turn NA
CATEGORY	A	B	C	D	E
S-31	480/55	416 (500-1)	480/60	416 (500-1¼)	480-1½ 416 (500-1½)
CIRCLING	540-1 465 (500-1)	600-1 525 (600-1)	620-1½ 545 (600-1½)	640-2 565 (600-2)	760-2½ 685 (700-2½)

ATLANTIC CITY, NEW JERSEY  
Amdt 1D 11JUL24

39°27'N-74°35'W

ATLANTIC CITY INTL (ACY)  
VOR RWY 31

NE-2, 07 AUG 2025 to 04 SEP 2025

NE-2, 07 AUG 2025 to 04 SEP 2025