

ATLANTIC CITY, NEW JERSEY

AL-669 (FAA)

24305

WAAS CH 50113 W31A	APP CRS 308°	Rwy Idg TDZE Apt Elev	10001 64 75
--	------------------------	-----------------------------	--

RNAV (GPS) Y RWY 31

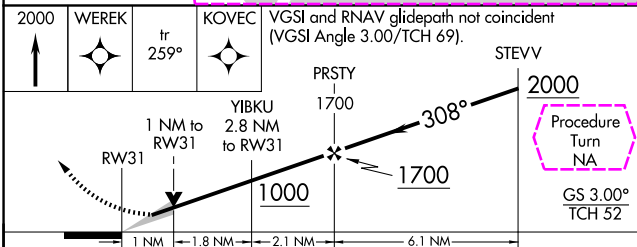
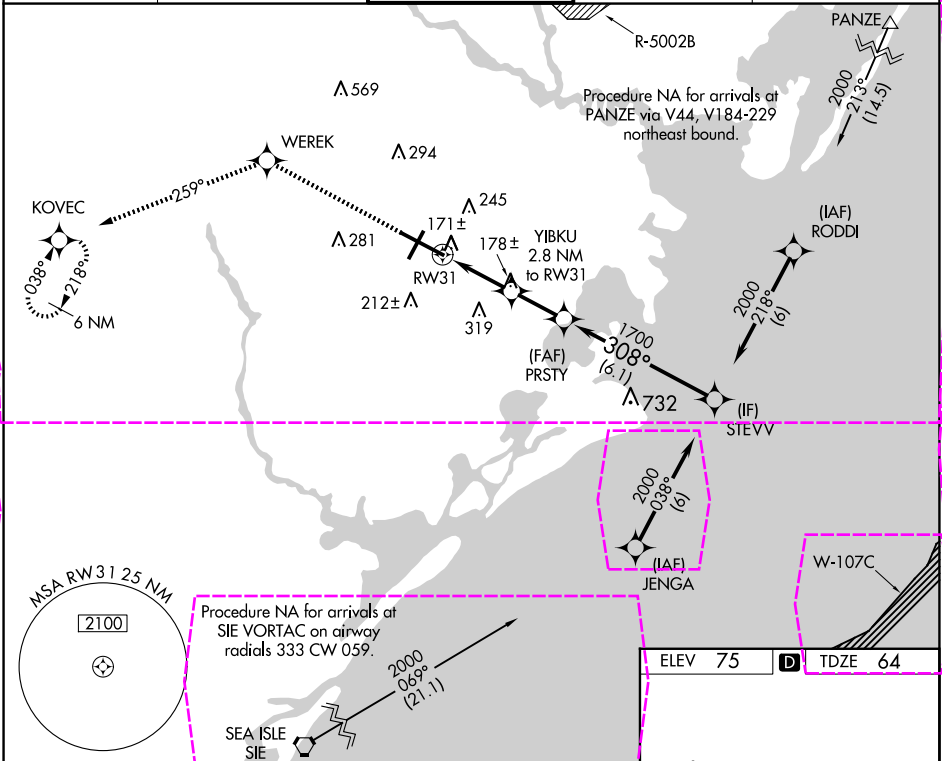
ATLANTIC CITY INTL (ACY)

RNP APCH - GPS.

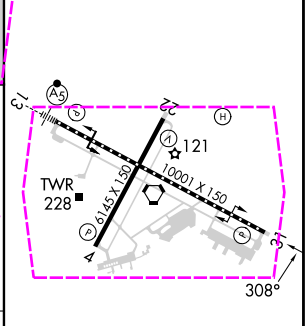
For uncompensated Baro-VNAV systems, LNAV/VNAV NA below -15°C or above 48°C.

MISSED APPROACH: Climb to 2000 direct WEREK and on track 259° to KOVEC and hold.

ATIS 125.725 316.15	ATLANTIC CITY APP CON 124.6 327.125	ATLANTIC CITY TOWER 120.3 239.0	GND CON 121.9 284.6	CLNC DEL 127.85 353.775
-------------------------------	---	---	-------------------------------	-----------------------------------



ELEV 75	TDZE 64
---------	---------



CATEGORY	A	B	C	D	E
LPV DA		264/40	200 (200-¾)		
LNAV/VNAV DA		422/60	358 (400-1¼)		
LNAV MDA	441/55	377 (400-1)	441/60	377 (400-1¼)	
CIRCLING	540-1 465 (500-1)	600-1 525 (600-1)	620-1½ 545 (600-1½)	640-2 565 (600-2)	760-2½ 685 (700-2½)

TDZ/CL Rwy 13
HIRL Rwy 4-22 and 13-31
REIL Rwy 31

ATLANTIC CITY, NEW JERSEY
Amdt 3B 11JUL24

39°27'N-74°35'W

ATLANTIC CITY INTL (ACY) RNAV (GPS) Y RWY 31

ATLANTIC CITY, NEW JERSEY

AL-669 (FAA)

25219

WAAS CH 50113 W31A	APP CRS 308°	Rwy Ldg TDZE Apt Elev	10001 63 75
--	------------------------	-----------------------------	--

RNAV (GPS) Y RWY 31

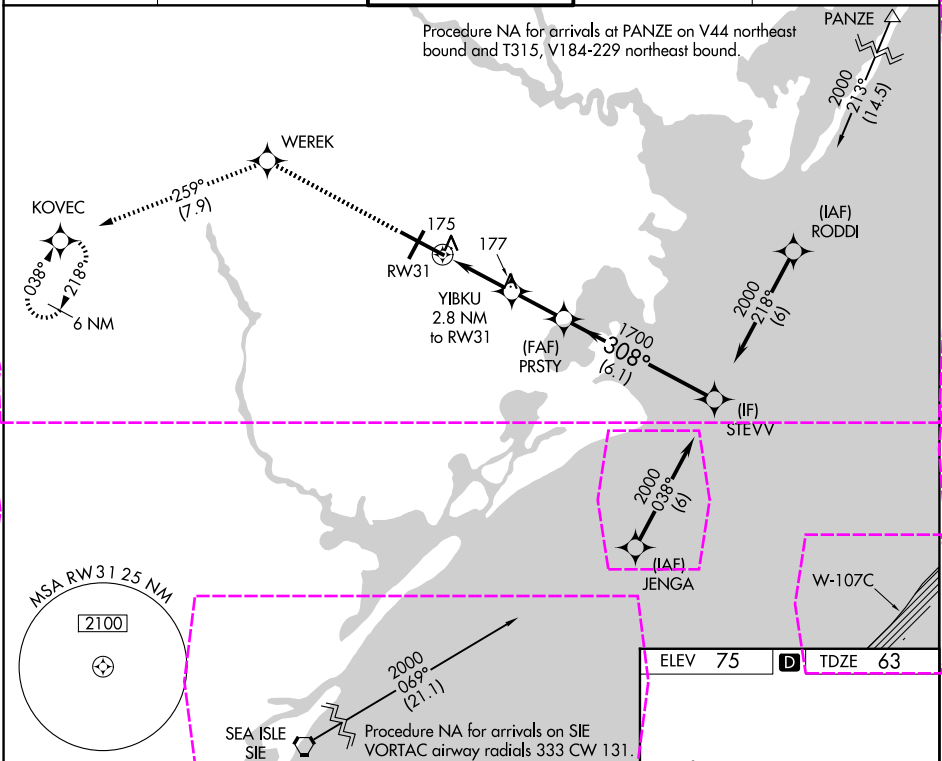
ATLANTIC CITY INTL (ACY)

RNP APCH - GPS.

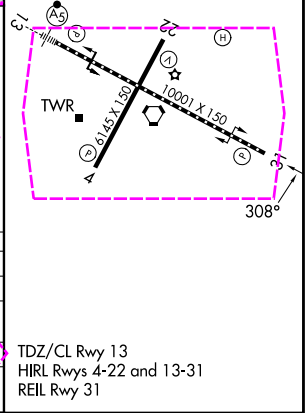
For uncompensated Baro-VNAV systems, LNAV/VNAV NA below -15°C or above 54°C.

MISSED APPROACH: Climb to 2000 direct WEREK and on track 259° to KOVEC and hold.

ATIS 125.725 316.15	ATLANTIC CITY APP CON 124.6 327.125	ATLANTIC CITY TOWER 120.3 239.0	GND CON 121.9 284.6	CLNC DEL 127.85 353.775
-------------------------------	---	---	-------------------------------	-----------------------------------



2000	WEREK	tr 259°	KOVEC	VGSI and RNAV glidepath not coincident (VGSI Angle 3.00/TCH 69°)	STEVV	2000
1 NM to RW31	1 NM	1.8 NM	2.1 NM	6.1 NM		
YIBKU 2.8 NM to RW31						
PRSTY 1700						
1000						
1700						
308°						
GS 3.00°						
TCH 52						
CATEGORY	A	B	C	D	E	
LPV DA		263/40	200 (200-¾)			
LNAV/VNAV DA		440/55	377 (400-1)			
LNAV MDA		440/55	377 (400-1)			
CIRCLING	540-1 465 (500-1)	600-1 525 (600-1)	620-1½ 545 (600-1½)	640-2 565 (600-2)	760-2½ 685 (700-2½)	



ATLANTIC CITY, NEW JERSEY
Amdt 3C 07AUG25

39°27'N-74°35'W

ATLANTIC CITY INTL (ACY)

RNAV (GPS) Y RWY 31