

ATLANTIC CITY, NEW JERSEY

AL-669 (FAA)

24305

WAAS CH <b>45513</b> <b>W13A</b>	APP CRS <b>128°</b>	Rwy Idg <b>10001</b> TDZE <b>75</b> Apt Elev <b>75</b>
--	------------------------	--

# RNAV (GPS) Y RWY 13

ATLANTIC CITY INTL (ACY)

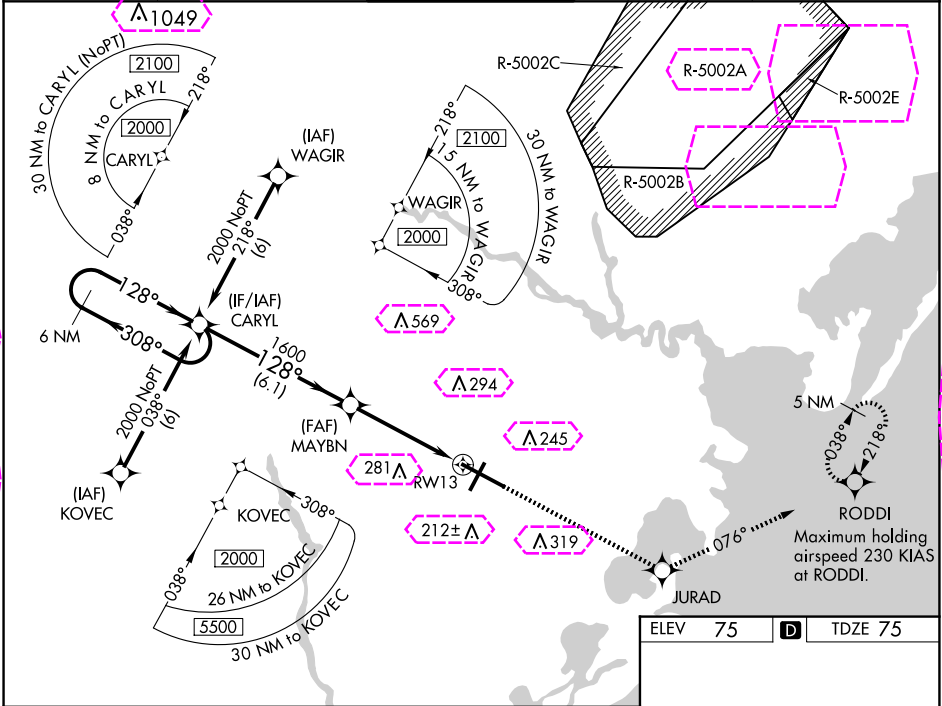
RNP APCH - GPS

▼ For inoperative MALSR, increase LPV Cat E visibility to RVR 4000, LNAV/VNAV Cat E visibility to 1½, and LNAV Cat D visibility to RVR 6000, Cat E visibility to 1½. For uncompensated Baro-VNAV systems, LNAV/VNAV NA below -15°C (5°F) or above 48°C (118°F).

MALSR

MISSED APPROACH: Climb to 2000 direct JURAD and on track 076° to RODDI and hold.

ATIS <b>125.725 316.15</b>	ATLANTIC CITY APP CON <b>124.6 327.125</b>	ATLANTIC CITY TOWER <b>120.3 239.0</b>	GND CON <b>121.9 284.6</b>	CLNC DEL <b>127.85 353.775</b>
-------------------------------	---	---	-------------------------------	-----------------------------------



6 NM Holding Pattern

2000 ← 308°  
128° →

GP 3.00°  
TCH 58

VGSI and RNAV glidepath not coincident (VGSI Angle 3.00/TCH 71).

1600

MAYBN

1600

RW13

1.2 NM to RW13

RW13

\*LNAV only

6.1 NM

3.4 NM

1.2 NM

CATEGORY	A	B	C	D	E
LPV DA	275/18 200 (200-½)				
LNAV/VNAV DA	475/40 400 (400-¾) 475/50 400 (400-1)				
LNAV MDA	520/24 445 (500-½)	520/40 445 (500-¾)	520/50 445 (500-1)		
CIRCLING	540-1 465 (500-1)	600-1 525 (600-1)	620-1½ 545 (600-1½)	640-2 565 (600-2)	760-2½ 685 (700-2½)

ELEV 75	<b>D</b>	TDZE 75
---------	----------	---------

TDZ/CL Rwy 13  
HIRL Rwy 4-22 and 13-31  
REIL Rwy 31

NE-2, 10 JUL 2025 to 07 AUG 2025

NE-2, 10 JUL 2025 to 07 AUG 2025

ATLANTIC CITY INTL (ACY)  
RNAV (GPS) Y RWY 13