

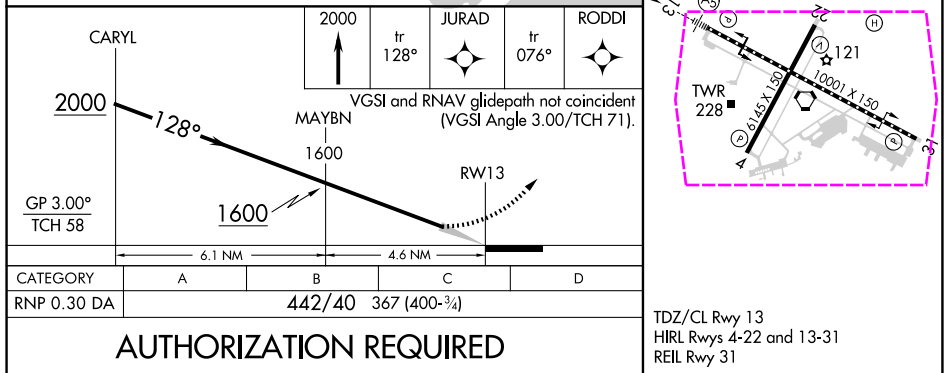
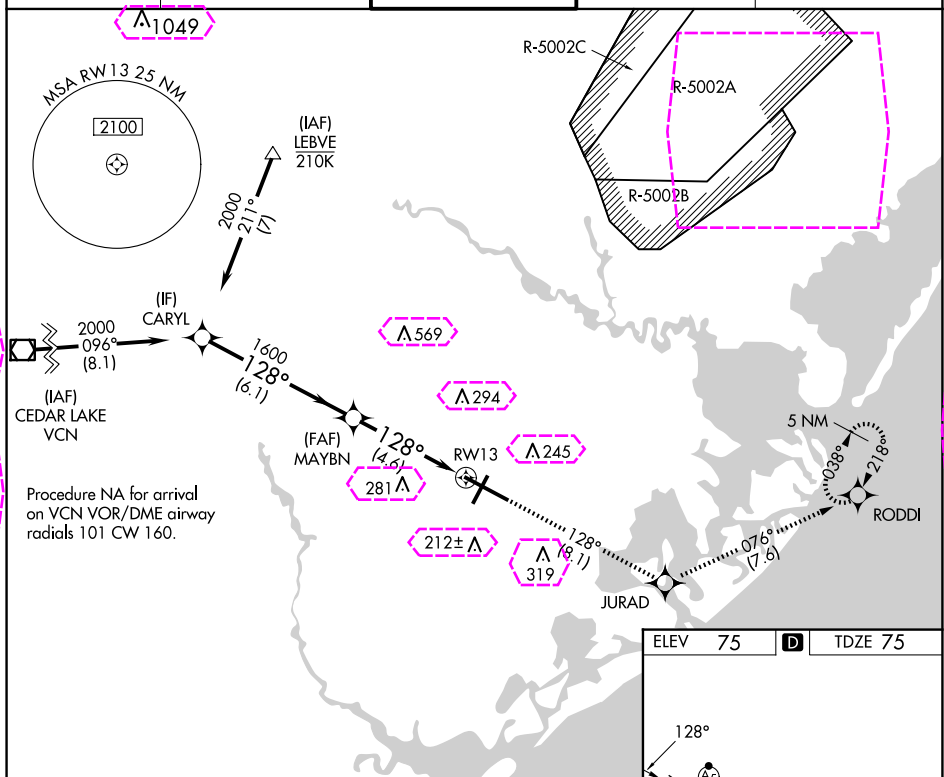


APP CRS	Rwy Idg	10001
128°	TDZE	75
	Apt Elev	75

RNAV (RNP) Z RWY 13  
ATLANTIC CITY INTL (ACY)

	<p>For uncompensated Baro-VNAV systems, procedure NA below -13°C (9°F) or above 54°C (130°F). GPS required. For inop ALS, increase RNP 0.30 all Cats visibility to RVR 6000.</p>		<p>MISSED APPROACH: Climb to 2000 on track 128° to JURAD and on track 076° to RODDI and hold.</p>
---	--	---	---

ATIS	ATLANTIC CITY APP CON	ATLANTIC CITY TOWER	GND CON	CLNC DEL
125.725 316.15	124.6 327.125	120.3 239.0	121.9 284.6	127.85 353.775



ATLANTIC CITY, NEW JERSEY



AL-669 (FAA)

25219

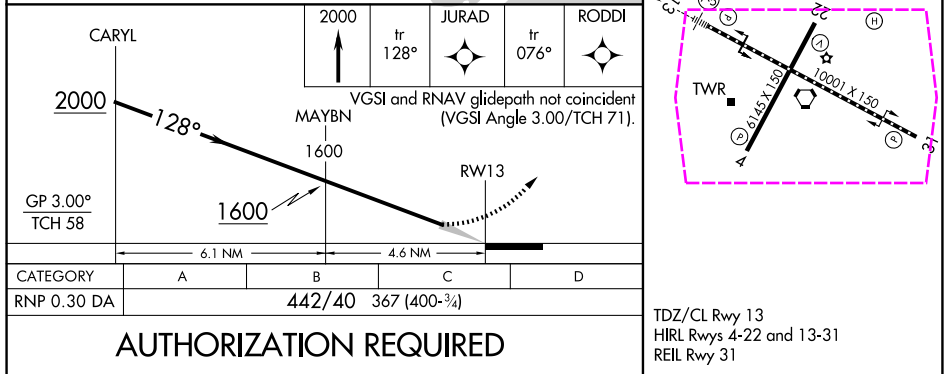
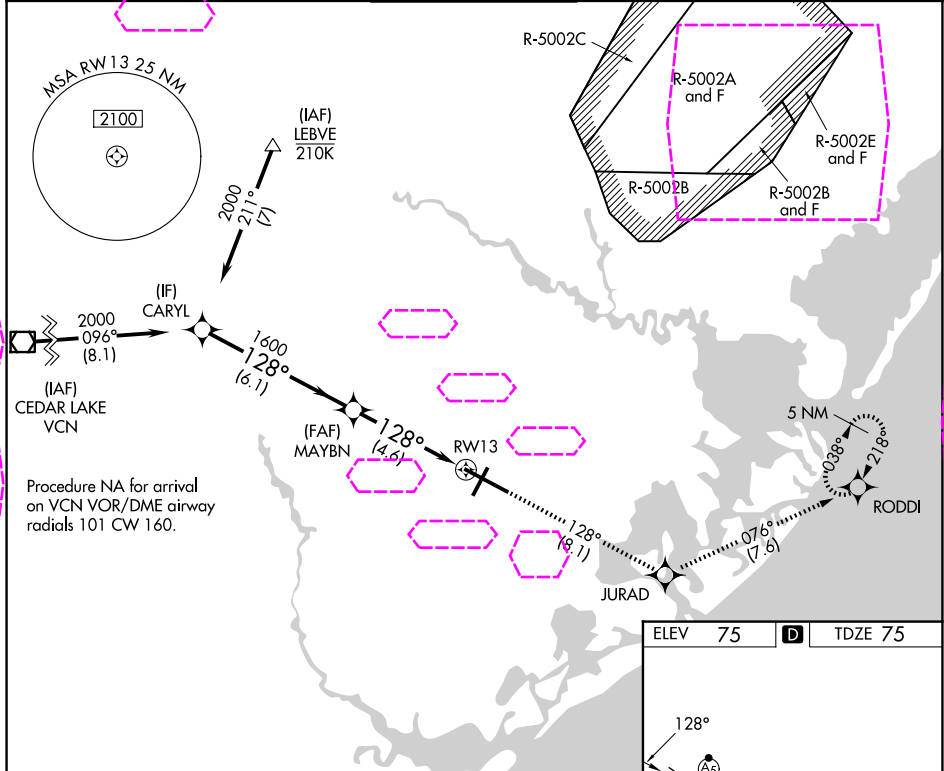
APP CRS	Rwy Ldg	10001
128°	TDZE	75
	Apt Elev	75

# RNAV (RNP) Z RWY 13

ATLANTIC CITY INTL (ACY)

 NA	For uncompensated Baro-VNAV systems, procedure NA below -13°C (9°F) or above 54°C (130°F). GPS required. For inop ALS, increase RNP 0.30 all Cats visibility to RVR 6000.	MALSR 	MISSED APPROACH: Climb to 2000 on track 128° to JURAD and on track 076° to RODDI and hold.
--	--	--	--

ATIS	ATLANTIC CITY APP CON	ATLANTIC CITY TOWER	GND CON	CLNC DEL
125.725 316.15	124.6 327.125	120.3 239.0	121.9 284.6	127.85 353.775



ATLANTIC CITY, NEW JERSEY  
Orig-C 12OCT17

39°27'N-74°35'W

ATLANTIC CITY INTL (ACY)  
**RNAV (RNP) Z RWY 13**