

ATLANTIC CITY, NEW JERSEY

AL-669 (FAA)

24305

WAAS CH 78231 W04A	APP CRS 038°	Rwy Idg TDZE 68 Apt Elev 75
----------------------------------------	------------------------	-------------------------------------------------

RNAV (GPS) RWY 4
ATLANTIC CITY INTL (ACY)

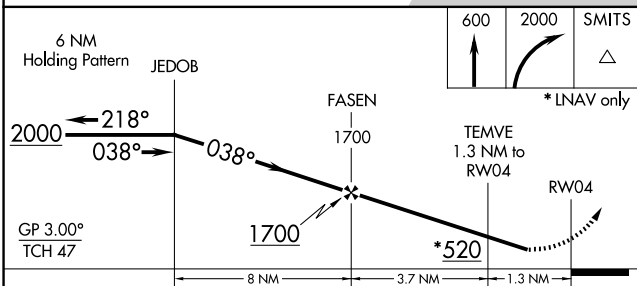
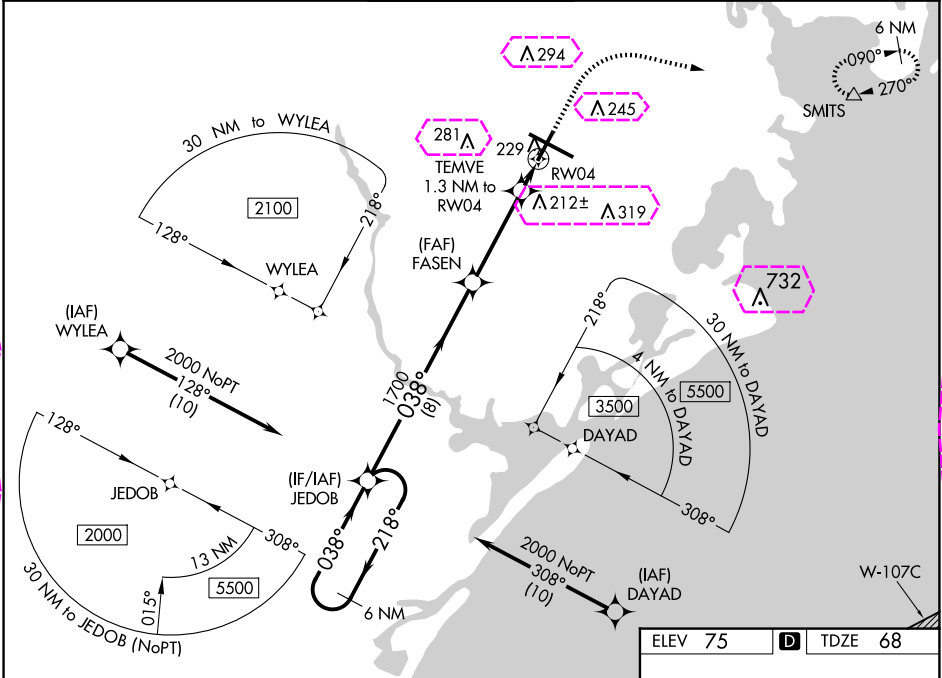
RNP APCH - GPS.

▼ For uncompensated Baro-VNAV systems, LNAV/VNAV NA below -13°C (9°F) or above 54°C (130°F). Rwy 4 helicopter visibility reduction below ¾ SM NA.

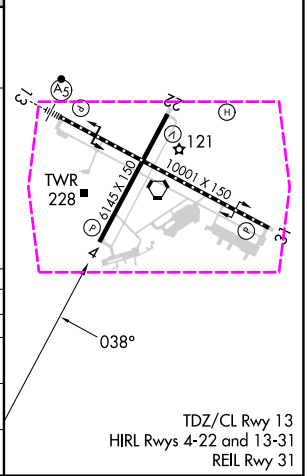
▲

MISSED APPROACH: Climb to 600 then climbing right turn to 2000 direct SMITS and hold.

ATIS 125.725 316.15	ATLANTIC CITY APP CON 124.6 327.125	ATLANTIC CITY TOWER 120.3 239.0	GND CON 121.9 284.6	CLNC DEL 127.85 353.775
-------------------------------	-----------------------------------------------	-------------------------------------------	-------------------------------	-----------------------------------



CATEGORY	A	B	C	D	E
LPV DA	318-1 250 (300-1)				
LNAV/VNAV DA	534-1½ 466 (500-1½)				
LNAV MDA	480-1	412 (500-1)	480-1½	412 (500-1½)	
CIRCLING	540-1 465 (500-1)	600-1 525 (600-1)	620-1½ 545 (600-1½)	640-2 565 (600-2)	760-2½ 685 (700-2½)



ATLANTIC CITY, NEW JERSEY

AL-669 (FAA)

25219

WAAS CH 78231 W04A	APP CRS 038°	Rwy Ldg TDZE 68 Apt Elev 75
----------------------------------------	------------------------	-------------------------------------------------

RNAV (GPS) RWY 4

ATLANTIC CITY INTL (ACY)

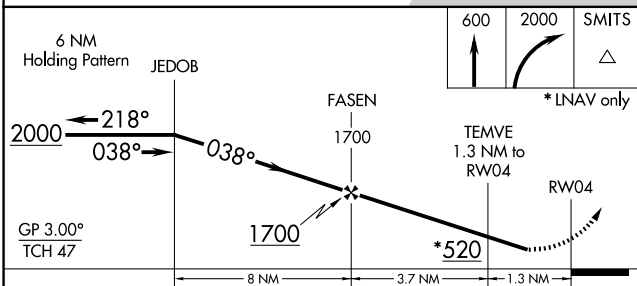
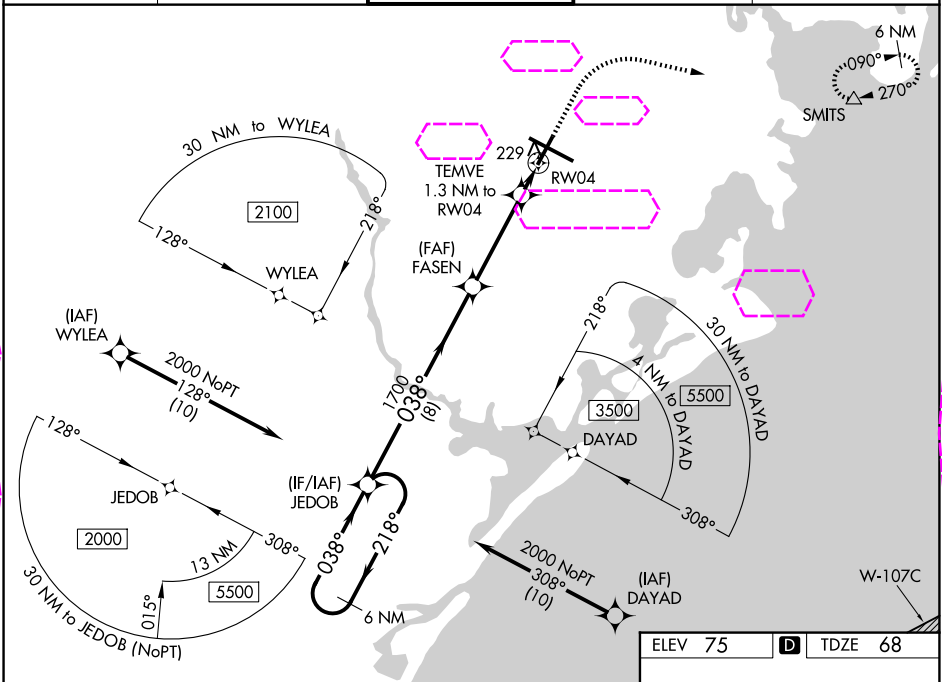
RNP APCH - GPS.

▼ For uncompensated Baro-VNAV systems, LNAV/VNAV NA below -13°C (9°F) or above 54°C (130°F). Rwy 4 helicopter visibility reduction below ¾ SM NA.

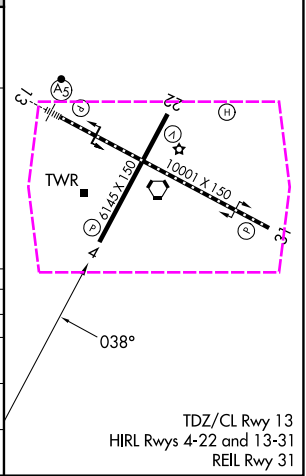
▲

MISSED APPROACH: Climb to 600 then climbing right turn to 2000 direct SMITS and hold.

ATIS 125.725 316.15	ATLANTIC CITY APP CON 124.6 327.125	ATLANTIC CITY TOWER 120.3 239.0	GND CON 121.9 284.6	CLNC DEL 127.85 353.775
-------------------------------	-----------------------------------------------	-------------------------------------------	-------------------------------	-----------------------------------



CATEGORY	A	B	C	D	E
LPV DA	318-1		250 (300-1)		
LNAV/VNAV DA	534-1½		466 (500-1½)		
LNAV MDA	480-1	412 (500-1)	480-1½	412 (500-1½)	
CIRCLING	540-1 465 (500-1)	600-1 525 (600-1)	620-1½ 545 (600-1½)	640-2 565 (600-2)	760-2½ 685 (700-2½)



ATLANTIC CITY, NEW JERSEY
Amdt 2C 09SEP21

39°27'N-74°35'W

ATLANTIC CITY INTL (ACY)
RNAV (GPS) RWY 4

NE-2, 07 AUG 2025 to 04 SEP 2025

NE-2, 07 AUG 2025 to 04 SEP 2025