

ATLANTIC CITY, NEW JERSEY

AL-669 (FAA)

24305

LOC/DME I-PVO	APP CRS	Rwy ldg	10001
109.1	128°	TDZE	75
Chan 28		Apt Elev	75

ILS Z or LOC Z RWY 13

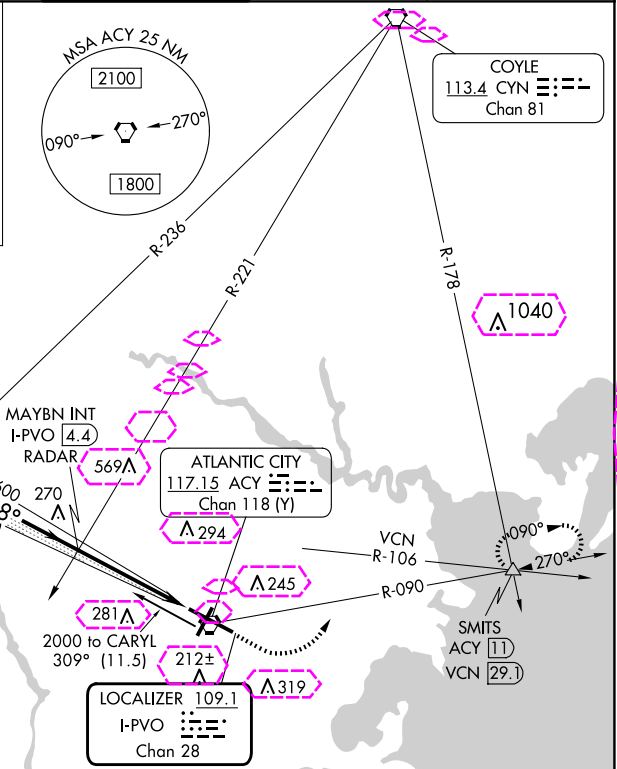
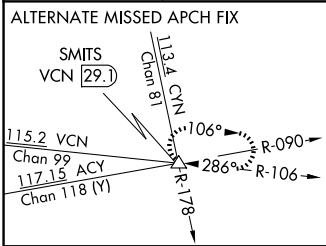
ATLANTIC CITY INTL (ACY)

⚠ For inop ALS, increase S-ILS 13 Cat E visibility to RVR 4000 and S-LOC 13 Cat E visibility to 1 3/8 SM.

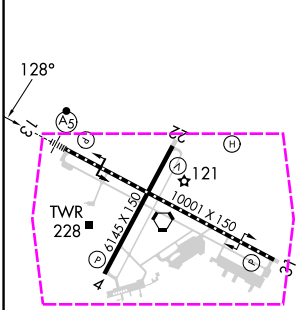
MALSR

MISSED APPROACH: Climb to 600 then climbing left turn to 2000 on ACY VORTAC R-090 to SMITS INT/ACY 11 DME and hold.

ATIS	ATLANTIC CITY APP CON	ATLANTIC CITY TOWER	GND CON	CLNC DEL
125.725 316.15	124.6 327.125	120.3 239.0	121.9 284.6	127.85 353.775



ELEV 75	TDZE 75
---------	---------



TDZ/CL Rwy 13	HIRL Rwy 4-22 and 13-31	REIL Rwy 31
FAF to MAP 4.6 NM		
Knots	60 90 120 150 180	
Min:Sec	4:36 3:04 2:18 1:50 1:32	

Use I-PVO DME when on the localizer course.

One Minute Holding Pattern	CARYL INT I-PVO 10.5	MAYBN INT I-PVO 4.4	600	2000	ACY R-090	SMITS
----------------------------	----------------------	---------------------	-----	------	-----------	-------

GS 3.00° TCH 58

CATEGORY	A	B	C	D	E
S-ILS 13	275/18 200 (200-1/2)				
S-LOC 13	520/24	445 (500-1/2)	520/45	445 (500-2/3)	
CIRCLING	540-1	600-1	620-1 1/2	640-2	760-2 1/2
	465 (500-1)	525 (600-1)	545 (600-1 1/2)	565 (600-2)	685 (700-2 1/2)

ATLANTIC CITY, NEW JERSEY
Amdt 8E 11JUL24

39°27'N-74°35'W

ILS Z or LOC Z RWY 13

ATLANTIC CITY, NEW JERSEY

AL-669 (FAA)

25219

LOC/DME I-PVO	APP CRS	Rwy Ldg	10001
109.1	128°	TDZE	75
Chan 28		Apt Elev	75

ILS Z or LOC Z RWY 13

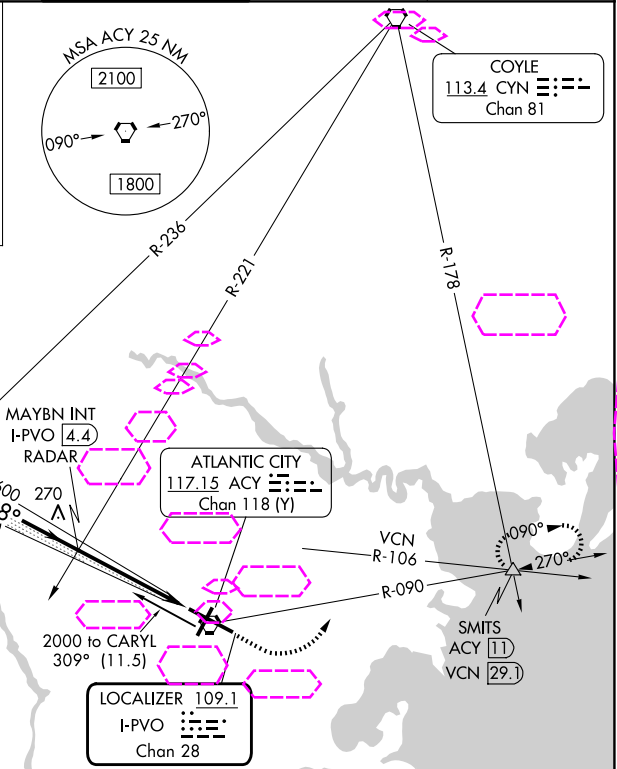
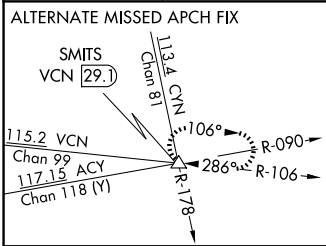
ATLANTIC CITY INTL (ACY)

⚠ For inop ALS, increase S-ILS 13 Cat E visibility to RVR 4000 and S-LOC 13 Cat E visibility to 1 3/8 SM.

MALSR

MISSED APPROACH: Climb to 600 then climbing left turn to 2000 on ACY VORTAC R-090 to SMITS INT/ACY 11 DME and hold.

ATIS	ATLANTIC CITY APP CON	ATLANTIC CITY TOWER	GND CON	CLNC DEL
125.725 316.15	124.6 327.125	120.3 239.0	121.9 284.6	127.85 353.775



ELEV 75 **D** TDZE 75

TDZ/CL Rwy 13
HIRL Rwys 4-22 and 13-31
REIL Rwy 31

FAF to MAP 4.6 NM

Knots	60	90	120	150	180
Min:Sec	4:36	3:04	2:18	1:50	1:32

Use I-PVO DME when on the localizer course.

One Minute Holding Pattern	CARYL INT I-PVO 10.5	MAYBN INT I-PVO 4.4	600	2000	ACY R-090	SMITS
----------------------------	----------------------	---------------------	-----	------	-----------	-------

GS 3.00° TCH 58

CATEGORY	A	B	C	D	E
S-ILS 13	275/18 200 (200-1/2)				
S-LOC 13	520/24	445 (500-1/2)	520/45	445 (500-2/3)	
CIRCLING	540-1	600-1	620-1 1/2	640-2	760-2 1/2
	465 (500-1)	525 (600-1)	545 (600-1 1/2)	565 (600-2)	685 (700-2 1/2)

NE-2, 07 AUG 2025 to 04 SEP 2025

NE-2, 07 AUG 2025 to 04 SEP 2025

ATLANTIC CITY, NEW JERSEY
Amdt 8E 11JUL24

39°27'N-74°35'W

ILS Z or LOC Z RWY 13