

ATLANTIC CITY, NEW JERSEY


AL-669 (FAA)

24305

LOC/DME I-ACY	APP CRS	Rwy Idg	10001
109.10	308°	TDZE	64
Chan 28		Apt Elev	75

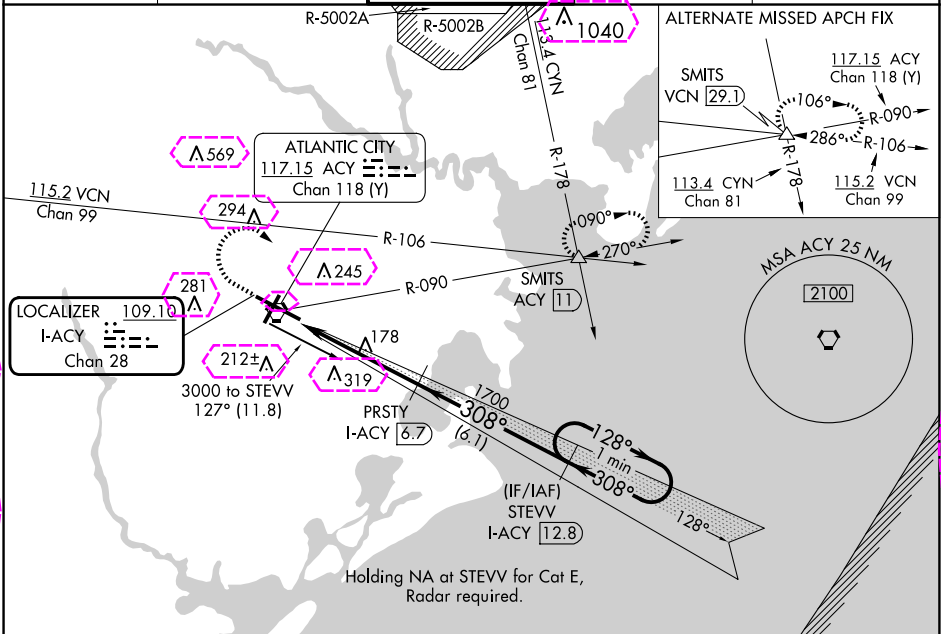
# ILS or LOC/DME RWY 31

ATLANTIC CITY INTL (ACY)

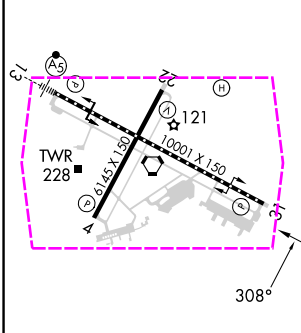


MISSED APPROACH: Climb to 500 then climbing right turn to 2000 via heading 130° and via ACY R-090 to SMITS INT/ACY 11 DME and hold.

ATIS	ATLANTIC CITY APP CON	ATLANTIC CITY TOWER	GND CON	CLNC DEL
125.725 316.15	124.6 327.125	120.3 239.0	121.9 284.6	127.85 353.775



ELEV 75	TDZE 64
---------	---------



TDZ/CL Rwy 13  
HIRL Rwy 4-22 and 13-31  
REIL Rwy 31

## DME REQUIRED

500

2000

ACY R-090

SMITS

Use I-ACY DME when on localizer course. VGSI and ILS glidepath not coincident (VGSI Angle 3.00/TCH 69).

One Minute Holding Pattern

PRSTY I-ACY 6.7

STEVEV I-ACY 12.8

I-ACY 1.8

I-ACY 3

1700

308°

128°

2000

GS 3.00° TCH 52

CATEGORY	A	B	C	D	E
S-ILS 31	264/40 200 (200-¾)				
S-LOC 31	520/55	456 (500-1)	520/60 456 (500-1½)	520-1½	456 (500-1½)
CIRCLING	540-1 465 (500-1)	600-1 525 (600-1)	620-1½ 545 (600-1½)	640-2 565 (600-2)	760-2½ 685 (700-2½)

ATLANTIC CITY, NEW JERSEY  
Orig-E 11JUL24

39°27'N-74°35'W

## ILS or LOC/DME RWY 31

ATLANTIC CITY INTL (ACY)

ATLANTIC CITY, NEW JERSEY

AL-669 (FAA)

25219

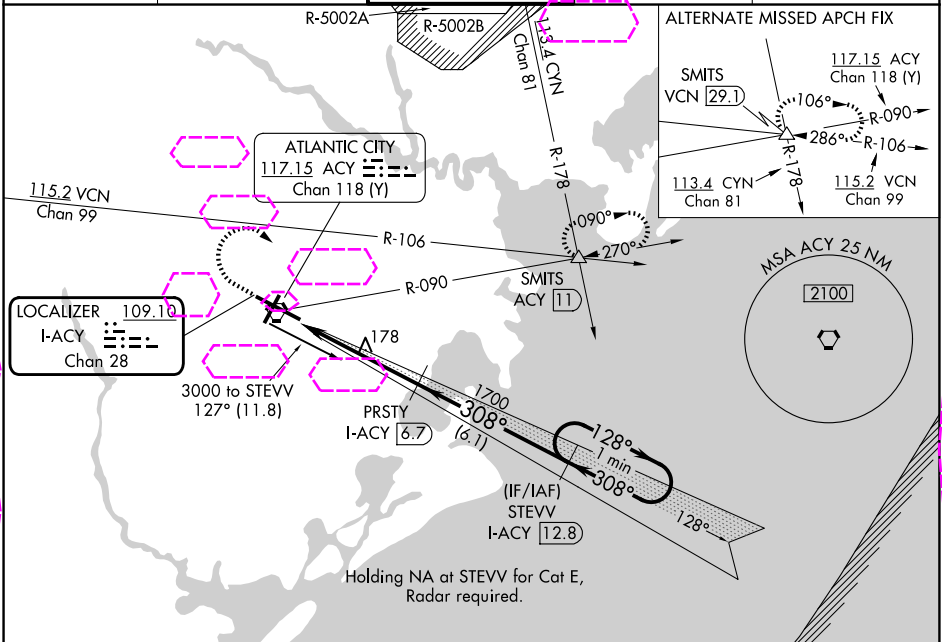
LOC/DME I-ACY	APP CRS	Rwy Ldg	10001
109.10	308°	TDZE	64
Chan 28		Apt Elev	75

# ILS or LOC/DME RWY 31

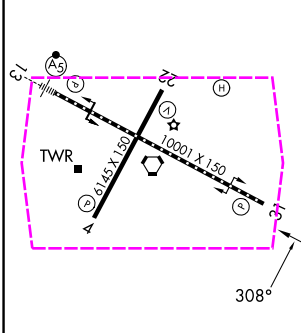
ATLANTIC CITY INTL (ACY)

MISSED APPROACH: Climb to 500 then climbing right turn to 2000 via heading 130° and via ACY R-090 to SMITS INT/ ACY 11 DME and hold.

ATIS	ATLANTIC CITY APP CON	ATLANTIC CITY TOWER	GND CON	CLNC DEL
125.725 316.15	124.6 327.125	120.3 239.0	121.9 284.6	127.85 353.775



ELEV 75	TDZE 64
---------	---------



TDZ/CL Rwy 13  
HIRL Rwy 4-22 and 13-31  
REIL Rwy 31

## DME REQUIRED

500	2000	ACY R-090	SMITS	Use I-ACY DME when on localizer course. VGSI and ILS glidepath not coincident (VGSI Angle 3.00/TCH 69).		One Minute Holding Pattern	
↑	hdg 130°			PRSTY I-ACY 6.7	STEVEV I-ACY 12.8		
		I-ACY 1.8	I-ACY 3	1700	308°	128°	2000
				1700		GS 3.00°	TCH 52
		1.2	3.7 NM	6.1 NM			
CATEGORY	A	B	C	D	E		
S-ILS 31	264/40 200 (200-3%)						
S-LOC 31	520/55	456 (500-1)	520-1 456 (500-1 1/2)	520-1 1/2	456 (500-1 1/2)		
CIRCLING	540-1 465 (500-1)	600-1 525 (600-1)	620-1 1/2 545 (600-1 1/2)	640-2 565 (600-2)	760-2 1/2 685 (700-2 1/2)		

ATLANTIC CITY, NEW JERSEY  
Orig-E 11JUL24

39°27'N-74°35'W

# ILS or LOC/DME RWY 31

NE-2, 07 AUG 2025 to 04 SEP 2025

NE-2, 07 AUG 2025 to 04 SEP 2025