

ATLANTIC CITY, NEW JERSEY

AL-669 (FAA)

24305

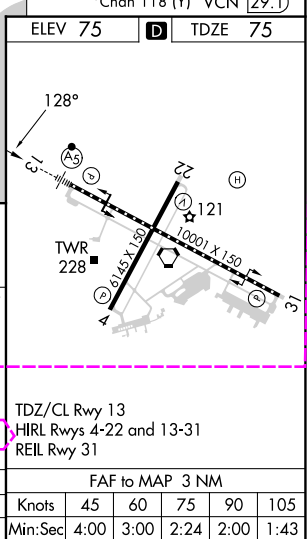
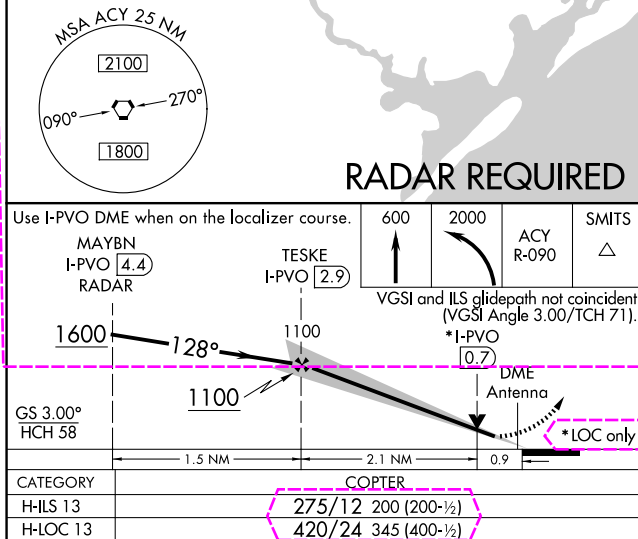
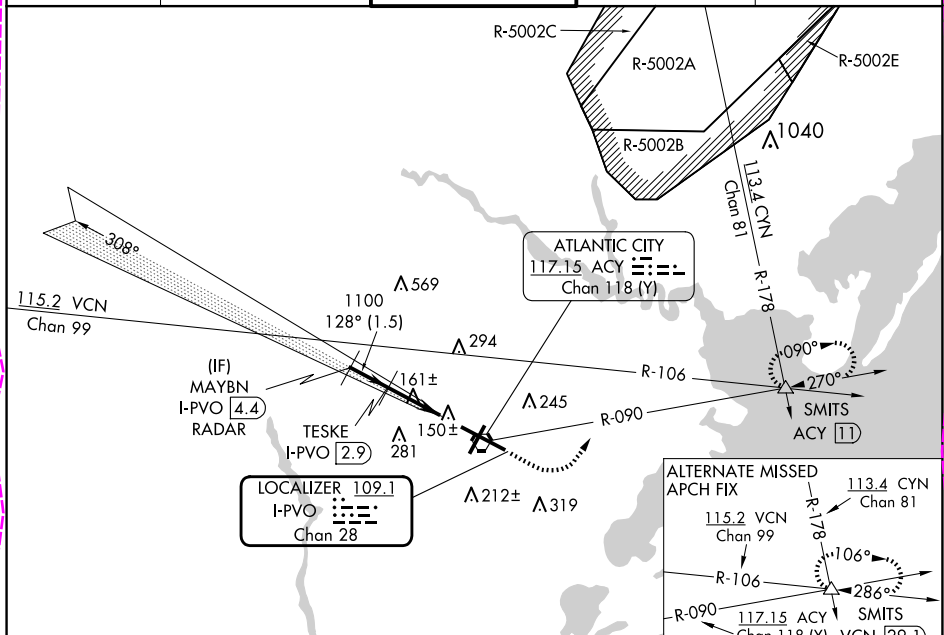
LOC/DME I-PVO	APP CRS	Rwy Idg	10001
109.1	128°	TDZE	75
Chan 28		Apt Elev	75

COPTER ILS or LOC/DME RWY 13

ATLANTIC CITY INTL (ACY)

NA	MALS	MISSED APPROACH: Climb to 600 then climbing left turn to 2000 via ACY R-090 to SMITS INT/ACY 11 DME and hold.
----	------	---

ATIS	ATLANTIC CITY APP CON	ATLANTIC CITY TOWER	GND CON	CLNC DEL
125.725 316.15	124.6 327.125	120.3 239.0	121.9 284.6	127.85 353.775



ATLANTIC CITY, NEW JERSEY
Amd 1C 07FEB13

39°27'N-74°35'W

ATLANTIC CITY INTL (ACY)
COPTER ILS or LOC/DME RWY 13

NE-2, 10 JUL 2025 to 07 AUG 2025

NE-2, 10 JUL 2025 to 07 AUG 2025

ATLANTIC CITY, NEW JERSEY

AL-669 (FAA)

25219

LOC/DME I-PVO	APP CRS	Rwy Ldg	10001
109.1	128°	TDZE	75
Chan 28		Apt Elev	75

COPTER ILS or LOC/DME RWY 13

ATLANTIC CITY INTL (ACY)

RADAR required.		MALSR	MISSED APPROACH: Climb to 600 then climbing left turn to 2000 on ACY VORTAC R-090 to SMITS INT/ACY 11 DME and hold.
NA			

ATIS	ATLANTIC CITY APP CON	ATLANTIC CITY TOWER	GND CON	CLNC DEL
125.725 316.15	124.6 327.125	120.3 239.0	121.9 284.6	127.85 353.775

