

LOC I-ART  
**111.1**

APP CRS  
**065°**

Rwy Ldg  
TDZE  
Apt Elev  
**4784**  
**319**  
**331**

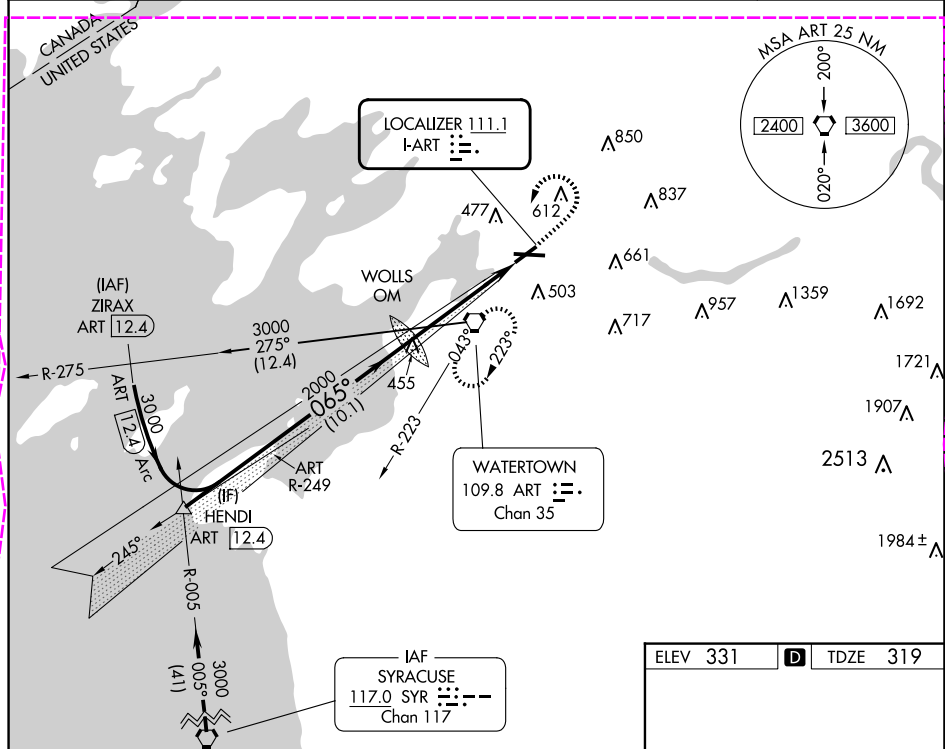
ILS or LOC RWY 7

WATERTOWN INTL (ART)

MAISR

MISSED APPROACH: Climb to 900 then climbing left turn to 2400 direct ART VORTAC and hold.

ASOS <b>132.325</b>	KGTB ATIS <b>119.525</b>	WHEELER-SACK APP CON <b>124.875 307.125</b>	CLNC DEL <b>120.8</b>	UNICOM <b>123.0 (CTAF) 0</b>
------------------------	-----------------------------	--	--------------------------	---------------------------------



900

2400

ART

HENDI INT  
ART 12.4

3000

065°

2000

1909

WOLLS OM

GS 3.00°  
TCH 55

10.1 NM

4.8 NM

CATEGORY	A	B	C	D
S-ILS 7	519-½ 200 (200-½)			
S-LOC 7	760-½	441 (500-½)	760-¾	441 (500-¾)
CIRCLING	960-1	629 (700-1)	980-1¾ 649 (700-1¾)	1080-2½ 749 (800-2½)

ELEV 331

D

TDZE 319

HIRL Rwy 7-25 0

MIRL Rwy 10-28 0

FAC TO MAP 4.8 NM

Knots

60

90

120

150

180

Min:Sec

4:48

3:12

2:24

1:55

1:36

WATERTOWN, NEW YORK

Amdt 8A 02DEC21

44°00'N-76°01'W

WATERTOWN INTL (ART)

ILS or LOC RWY 7

LOC/DME I-ART  
**111.1**  
Chan **48**

APP CRS  
**065°**

Rwy Ldg  
TDZE **319**  
Apt Elev **331**

ILS or LOC RWY 7  
WATERTOWN INTL (ART)

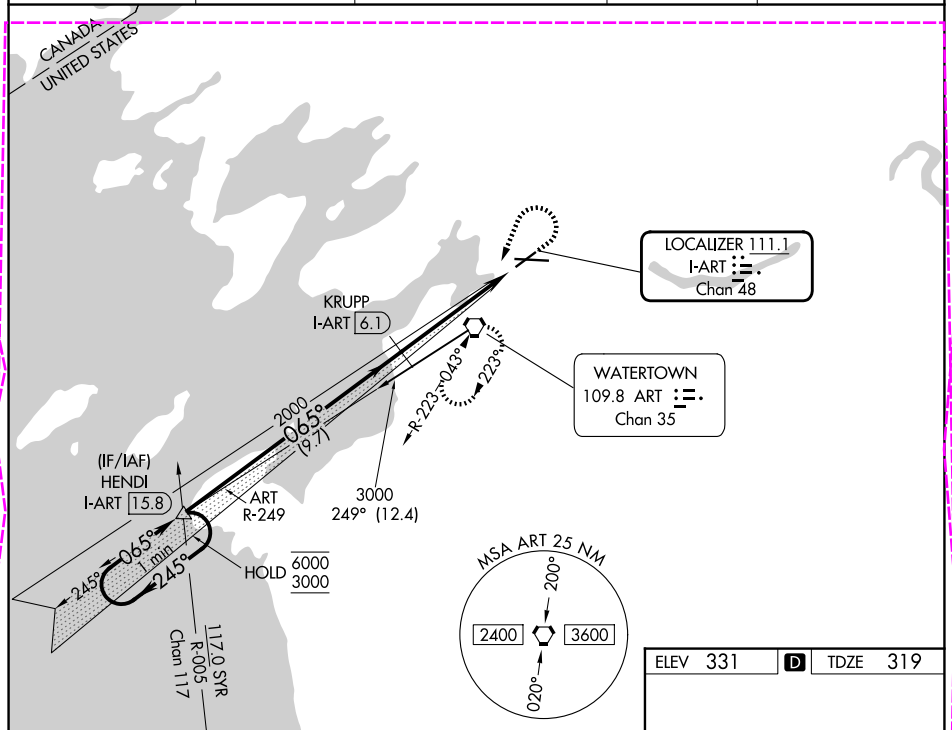
DME required.

Autopilot coupled approach NA below 900.  
For inop ALS, increase S-LOC visibility Cat C/D to 1½ SM.

MALSR

MISSED APPROACH: Climb to 900 then climbing left turn to 3000 direct ART VORTAC and hold, continue climb in hold to 3000.

ASOS <b>132.325</b>	KGTB ATIS <b>119.525</b>	WHEELER-SACK APP CON <b>124.875 307.125</b>	CLNC DEL <b>120.8</b>	UNICOM <b>123.0 (CTAF) 0</b>
------------------------	-----------------------------	--	--------------------------	---------------------------------



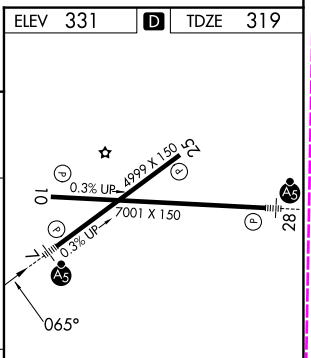
One Minute Holding Pattern HENDI I-ART 15.8

6000 ← 245°  
3000 → 065°

GS 3.00°  
TCH 55

9.7 NM 3.8 NM 1.4 NM

900 3000 ART



CATEGORY	A	B	C	D
S-ILS 7	519-½ 200 (200-½)			
S-LOC 7	800-½ 481 (500-½)		800-1 481 (500-1)	
CIRCLING	960-1 629 (700-1)		980-1¾ 649 (700-1¾)	1080-2½ 749 (800-2½)

REIL Rwy 25 0  
HIRL Rwy 7-25 0  
MIRL Rwy 10-28 0

FAF to MAP 5.1 NM

Knots	60	90	120	150	180
Min:Sec	5:06	3:24	2:33	2:02	1:42