

MERCED, CALIFORNIA

AL-665 (FAA)

22363

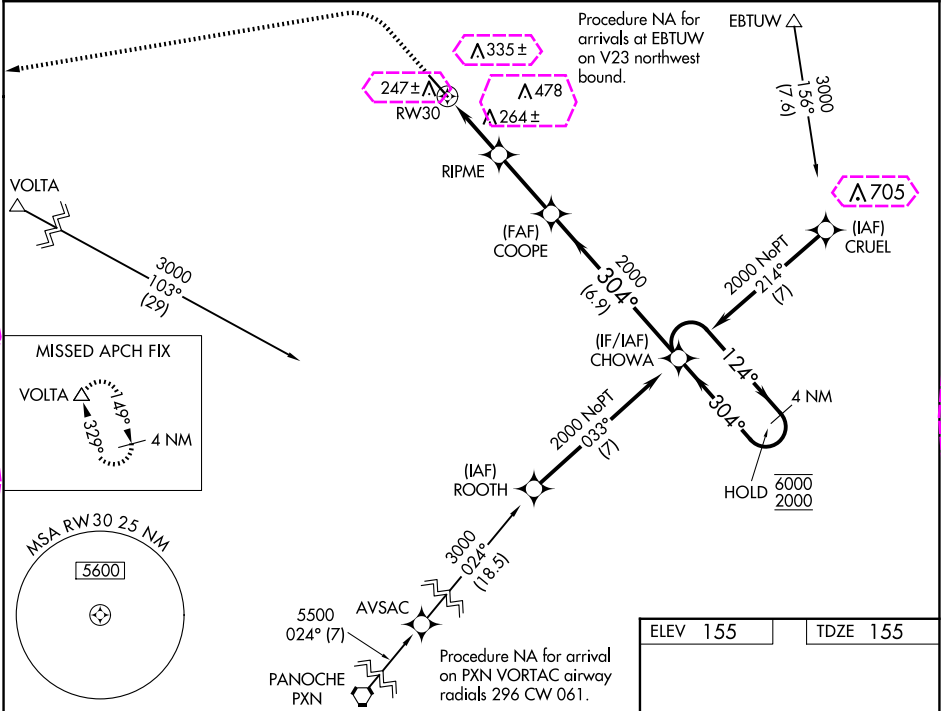
WAAS CH 93709 W30A	APP CRS 304°	Rwy Idg 5914 TDZE 155 Apt Elev 155
--	------------------------	---

RNAV (GPS) RWY 30

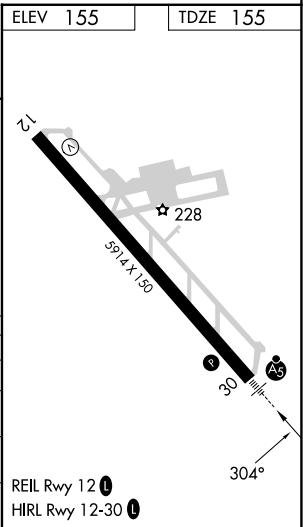
MERCED YOSEMITE RGNL (MCE)

RNP APCH. ▼ For uncompensated Baro-VNAV systems, LNAV/VNAV NA below -3°C or above 54°C. For inoperative ALS, increase LNAV Cats C/D visibility to 1 3/8 SM. Circling NA northeast of Rwy 12-30.	MALSR 	MISSED APPROACH: Climb to 1000 then climbing left turn to 3000 direct VOLTA and hold.
--	-----------	---

ASOS 132.175	NORCAL APP CON 120.95 269.45	UNICOM 122.7 (CTAF) 0
------------------------	--	---------------------------------



1000	3000	VOLTA				
↑	↷	△				
*LNAV only	RIPME	COOPE	CHOWA	4 NM Holding Pattern		
1 NM to RW30	1100	304°	124°	6000	2000	
1 NM	1.8 NM	2.8 NM	6.9 NM	GP 3.00° TCH 53		
CATEGORY	A	B	C	D		
LPV DA	355-1½		200 (200-½)			
LNAV/VNAV DA	544-5⁄8		389 (400-5⁄8)			
LNAV MDA	520-½	365 (400-½)	520-5⁄8	365 (400-5⁄8)		
CIRCLING	560-1 405 (500-1)	620-1 465 (500-1)	620-1½ 465 (500-1½)	720-2 565 (600-2)		



MERCED, CALIFORNIA

Amdt 1 15AUG19

37°17'N-120°31'W

RNAV (GPS) RWY 30

MERCED, CALIFORNIA

AL-665 (FAA)

25219

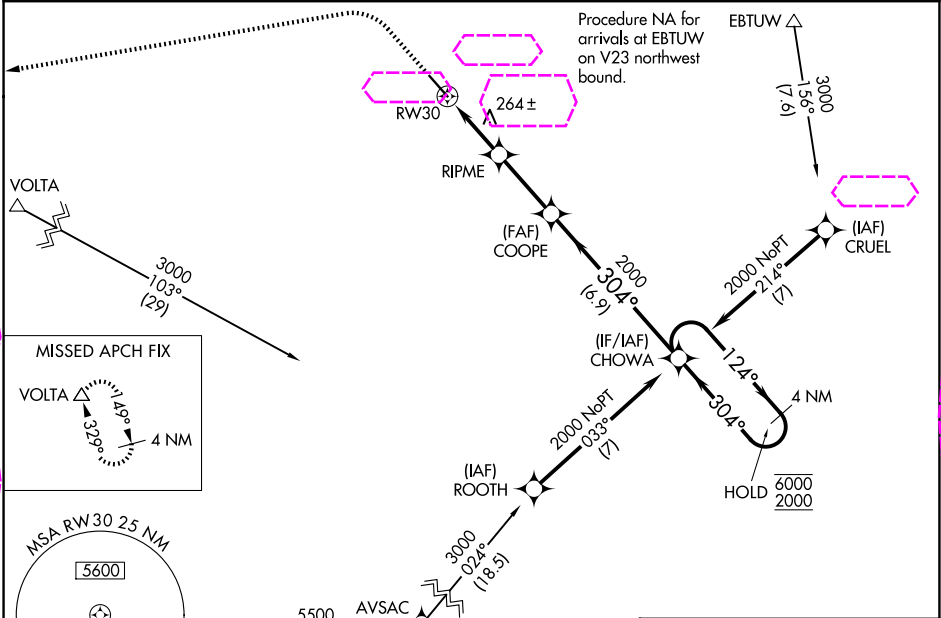
WAAS CH 93709 W30A	APP CRS 304°	Rwy Ldg 5914 TDZE 155 Apt Elev 155
--	------------------------	---

RNAV (GPS) RWY 30

MERCED YOSEMITE RGNL (MCE)

RNP APCH. ▼ For uncompensated Baro-VNAV systems, LNAV/VNAV NA below -3°C or above 54°C. For inoperative ALS, increase LNAV Cats C/D visibility to 1 3/8 SM. Circling NA northeast of Rwy 12-30.	MALSR 	MISSED APPROACH: Climb to 1000 then climbing left turn to 3000 direct VOLTA and hold.
--	-----------	---

ASOS 132.175	NORCAL APP CON 120.95 269.45	UNICOM 122.7 (CTAF) 0
------------------------	--	---------------------------------



024° (7)

PANOCHÉ
PXN

Procedure NA for arrival
on PXN VORTAC airway
radials 296 CW 061.

1000 3000 VOLTA

*LNAV only

*1 NM to
RW30

RW30

1 NM

1.8 NM

2.8 NM

6.9 NM

COOPE

CHOWA

4 NM
Holding Pattern

124° → 6000
← 304° 2000

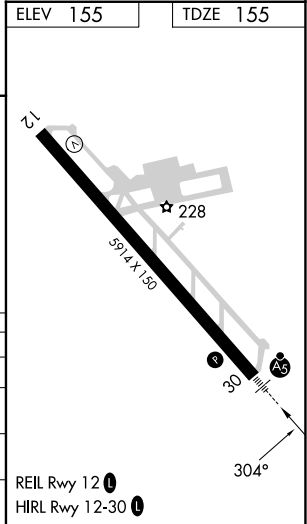
304°

2000

GP 3.00°
TCH 53

1100*

CATEGORY	A	B	C	D
LPV DA		355-1/2	200 (200-1/2)	
LNAV/ VNAV DA		544-5/8	389 (400-5/8)	
LNAV MDA	520-1/2	365 (400-1/2)	520-5/8	365 (400-5/8)
CIRCLING	560-1 405 (500-1)	620-1 465 (500-1)	620-1 1/2 465 (500-1 1/2)	720-2 565 (600-2)



MERCED, CALIFORNIA

Amdt 1 15AUG19

37°17'N-120°31'W

MERCED YOSEMITE RGNL (MCE)

RNAV (GPS) RWY 30