

MERCED, CALIFORNIA

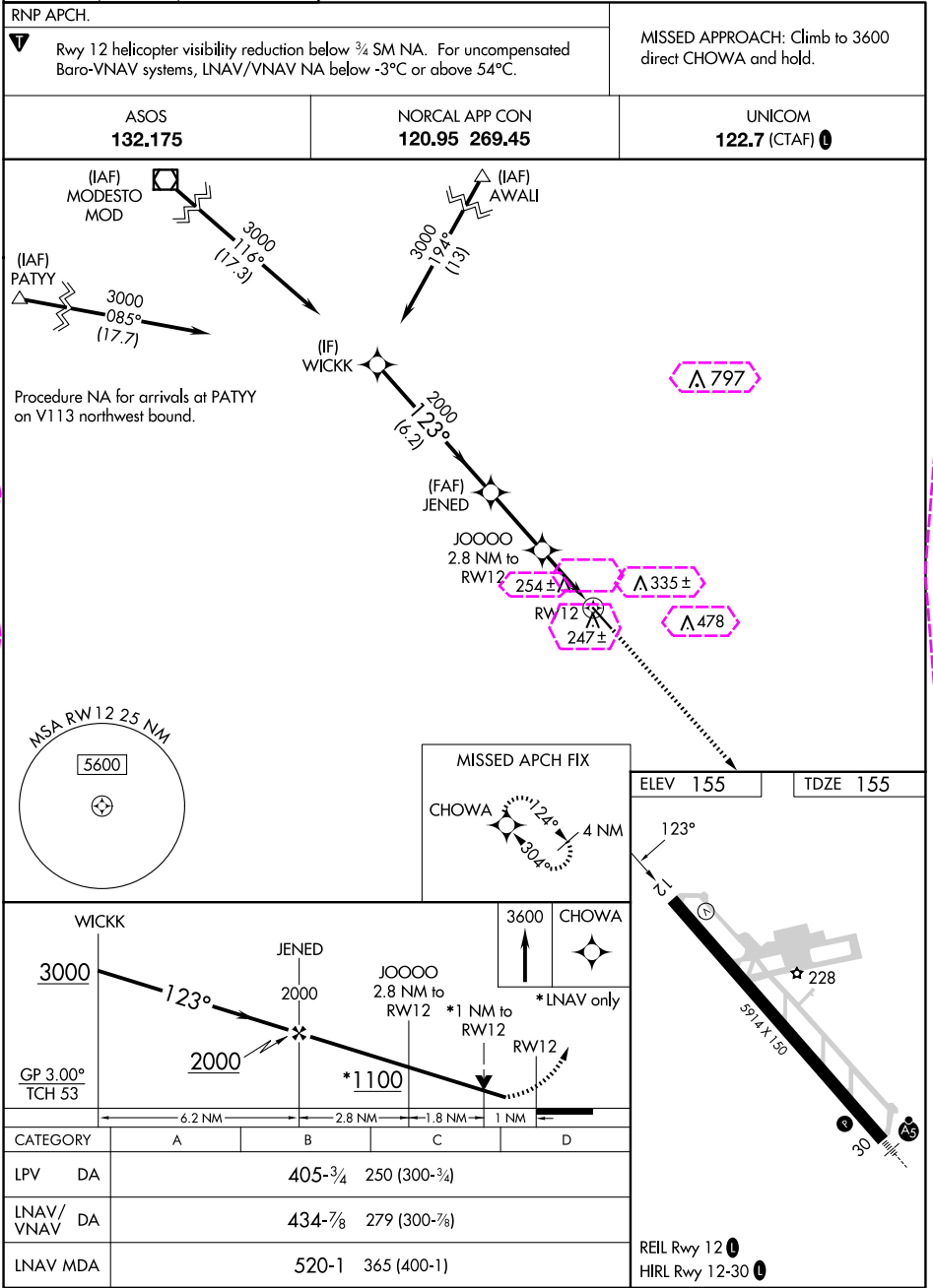
AL-665 (FAA)

22363

WAAS CH <b>93923</b> <b>W12A</b>	APP CRS <b>123°</b>	Rwy Idg <b>5914</b> TDZE <b>155</b> Apt Elev <b>155</b>
--	------------------------	---

# RNAV (GPS) RWY 12

MERCED YOSEMITE RGNL (MCE)



SW-2, 10 JUL 2025 to 07 AUG 2025

SW-2, 10 JUL 2025 to 07 AUG 2025

MERCED, CALIFORNIA

Amtd 1 15AUG19

37°17'N-120°31'W

# RNAV (GPS) RWY 12

MERCED YOSEMITE RGNL (MCE)

MERCED, CALIFORNIA

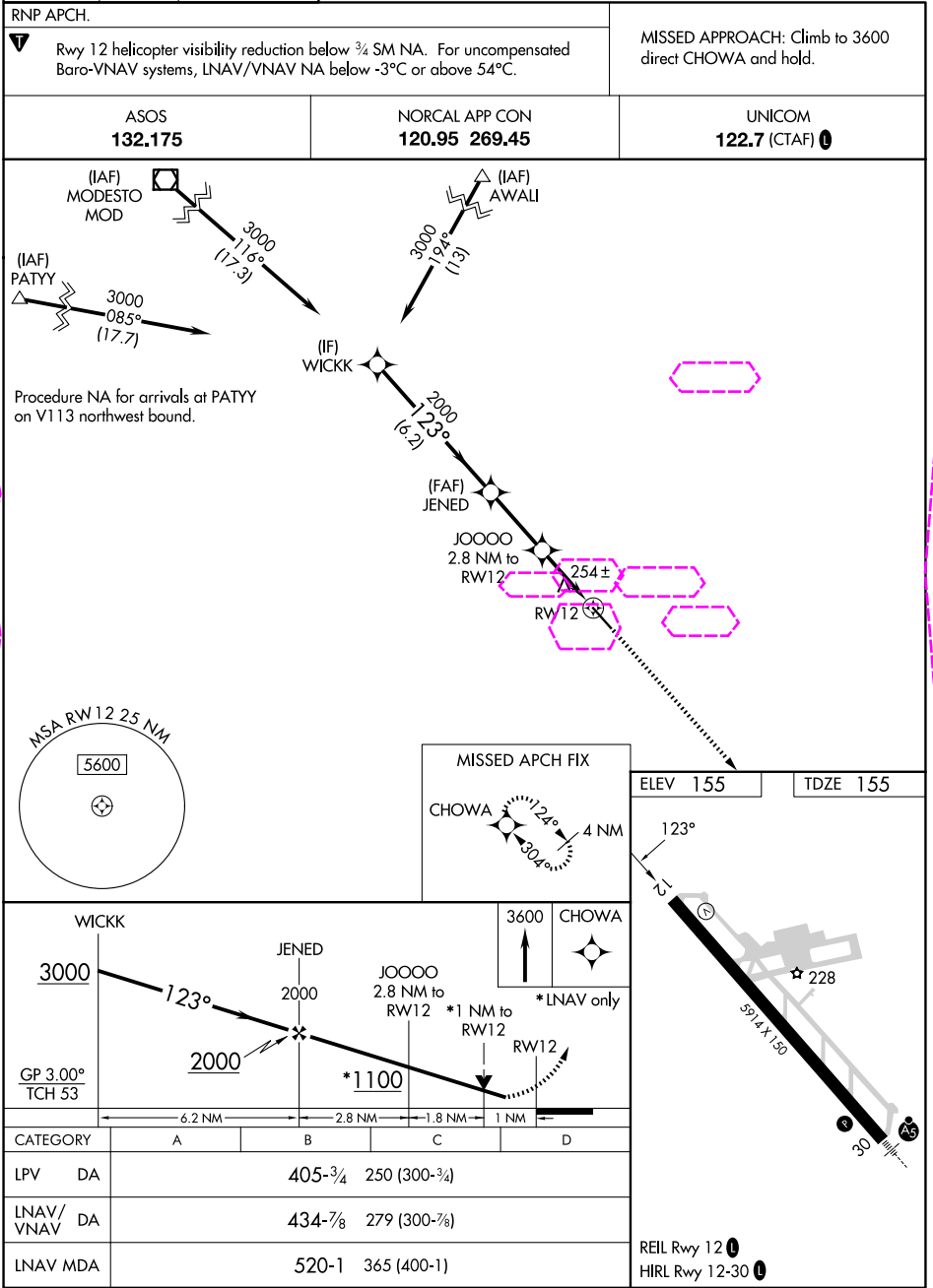
AL-665 (FAA)

25219

WAAS CH <b>93923</b> <b>W12A</b>	APP CRS <b>123°</b>	Rwy Ldg <b>5914</b> TDZE <b>155</b> Apt Elev <b>155</b>
--	------------------------	---

# RNAV (GPS) RWY 12

MERCED YOSEMITE RGNL (MCE)



SW-2, 07 AUG 2025 to 04 SEP 2025

SW-2, 07 AUG 2025 to 04 SEP 2025

MERCED, CALIFORNIA

Amtd 1 15AUG19

37°17'N-120°31'W

# RNAV (GPS) RWY 12

MERCED YOSEMITE RGNL (MCE)