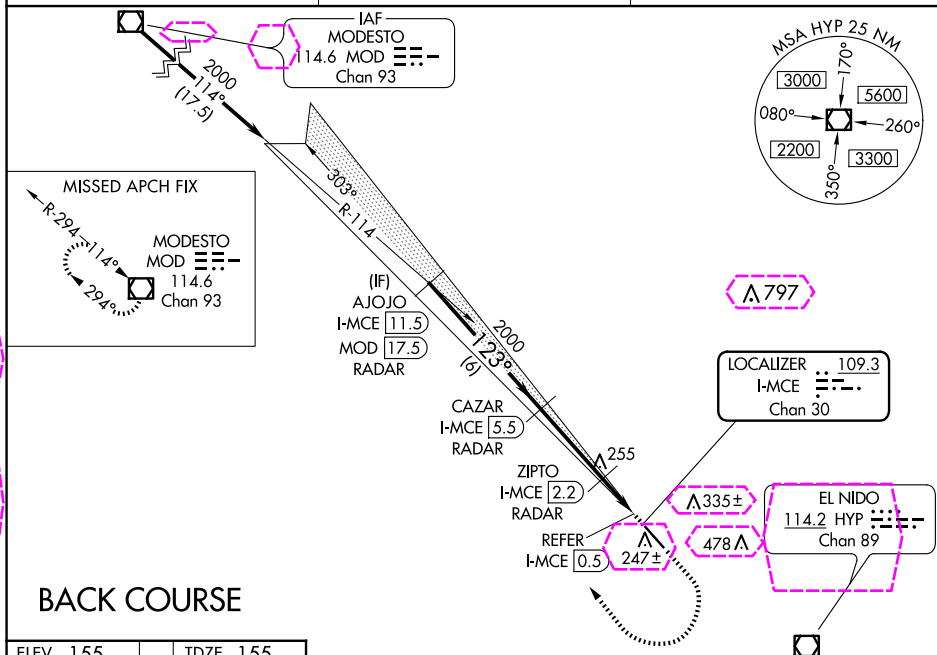


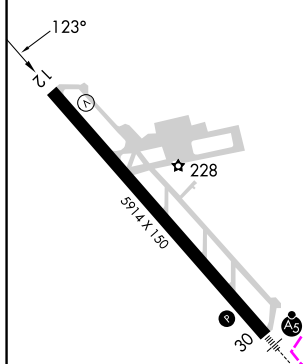
LOC BC RWY 12
MERCED YOSEMITE RGNL (MCE)

MISSED APPROACH: Climb to 1000 then climbing right turn to 3000 direct MOD VOR/DME and hold.

UNICOM
122.7 (CTAF) **L**

BACK COURSE

ELEV 155		TDZE 155
----------	--	----------

HIRE Rwy 12-30 **L**

FAF to MAP 5 NM

Knots	60	90	120	150	180
Min:Sec	5:00	3:20	2:30	2:00	1:40

Figure 1-1: Example of a ZIPTO FIX MINIMUMS chart. The chart shows a flight path from AJOJO (I-MCE 11.5) and CAZAR (I-MCE 5.5) to ZIPTO (I-MCE 2.2), then to a point with I-MCE 0.9, and finally to a point with I-MCE 0.5. The path is divided into segments A, B, C, and D. Segment A is 6 NM, B is 3.3 NM, C is 1.3 NM, and D is 0.4 NM. The chart also shows a 123° bearing from AJOJO to the intersection of the paths, a 3.00° bearing from the intersection to the point with I-MCE 0.9, and a 640 MILES distance from the intersection to the point with I-MCE 0.5. The chart includes a legend for MOD (MOD 1, MOD 2, MOD 3) and a note to disregard glide slope indications.

CATEGORY	A	B	C	D
S-12	640-1	485 (500-1)	640-1 $\frac{3}{8}$	485 (500-1 $\frac{3}{8}$)
CIRCLING	640-1	485 (500-1)	640-1 $\frac{1}{2}$ 485 (500-1 $\frac{1}{2}$)	720-2 565 (600-2)

ZIPTO FIX MINIMUMS

S-12	520-1 365 (400-1)	620-1 465 (500-1)	620-1 $\frac{1}{2}$ 465 (500-1 $\frac{1}{2}$)	720-2 565 (600-2)
CIRCLING	560-1 405 (500-1)	620-1 465 (500-1)	620-1 $\frac{1}{2}$ 465 (500-1 $\frac{1}{2}$)	720-2 565 (600-2)

37°17'N-120°31'W

MERCED YOSEMITE RGNL (MCE)

LOC BC RWY 12

SW-2, 10 JUL 2025 to 07 AUG 2025

MERCED, CALIFORNIA

AL-665 (FAA)

25219

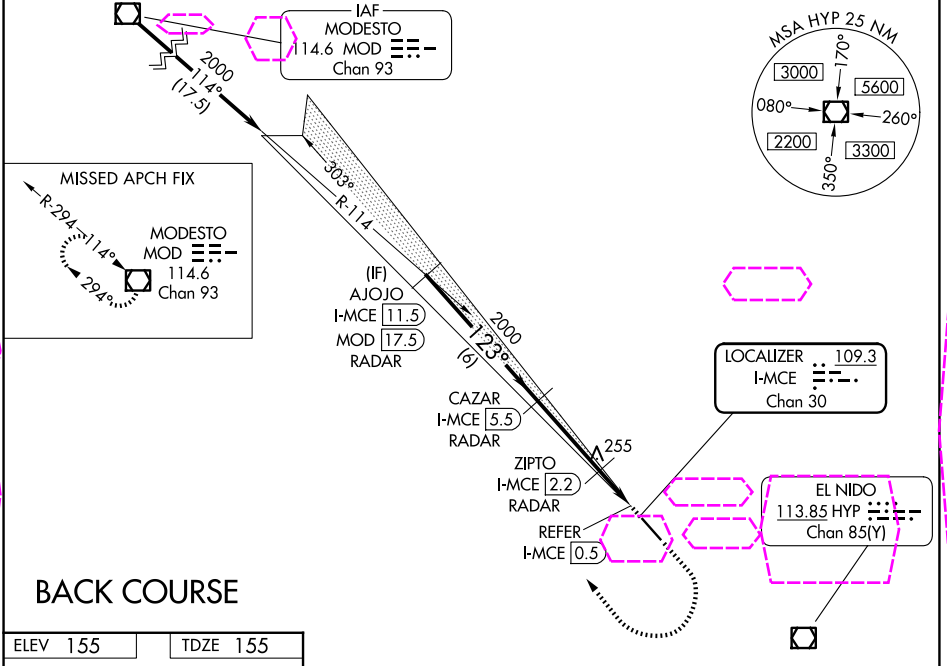
LOC/DME F-MCE 109.3 Chan 30	APP CRS 123°	Rwy Ldg 5914 TDZE 155 Apt Elev 155
---	------------------------	---

LOC BC RWY 12

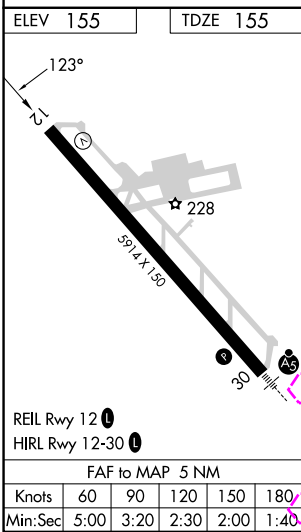
MERCED YOSEMITE RGNL (MCE)

DME or RADAR required.	MISSED APPROACH: Climb to 1000 then climbing right turn to 3000 direct MOD VOR/DME and hold.
NA Rwy 12 helicopter visibility reduction below 3/4 SM NA. Circling NA northeast of Rwy 12-30.	

ASOS 132.175	NORCAL APP CON 120.95 269.45	UNICOM 122.7 (CTAF) 0
------------------------	--	---------------------------------



BACK COURSE



	AJOJO I-MCE 11.5 RADAR	CAZAR I-MCE 5.5 RADAR	ZIPTO I-MCE 2.2 RADAR	1000 3000 MOD
	2000	2000	640	I-MCE 0.9 REFER I-MCE 0.5
	Disregard glide slope indications. 3.00° TCH 53			
	-6 NM -3.3 NM -1.3 NM 0.4 NM 0.6 NM			
CATEGORY	A	B	C	D
S-12	640-1 485 (500-1)		640-1 3/8 485 (500-1 3/8)	
CIRCLING	640-1 485 (500-1)		640-1 1/2 485 (500-1 1/2)	720-2 565 (600-2)
	ZIPTO FIX MINIMUMS			
S-12	520-1 365 (400-1)	NA		
CIRCLING	560-1 405 (500-1)	620-1 465 (500-1)	620-1 1/2 465 (500-1 1/2)	720-2 565 (600-2)

MERCED, CALIFORNIA

Amdt 11 15AUG19

37°17'N-120°31'W

MERCED YOSEMITE RGNL (MCE)

LOC BC RWY 12

SW-2, 07 AUG 2025 to 04 SEP 2025

SW-2, 07 AUG 2025 to 04 SEP 2025