

MERCED, CALIFORNIA

AL-665 (FAA)

22363

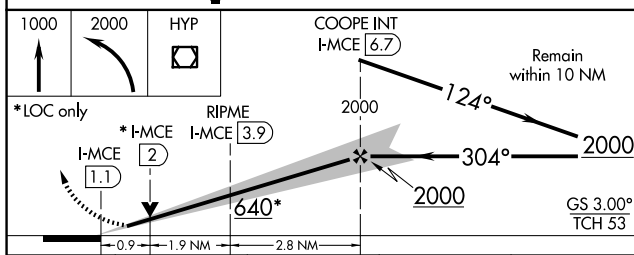
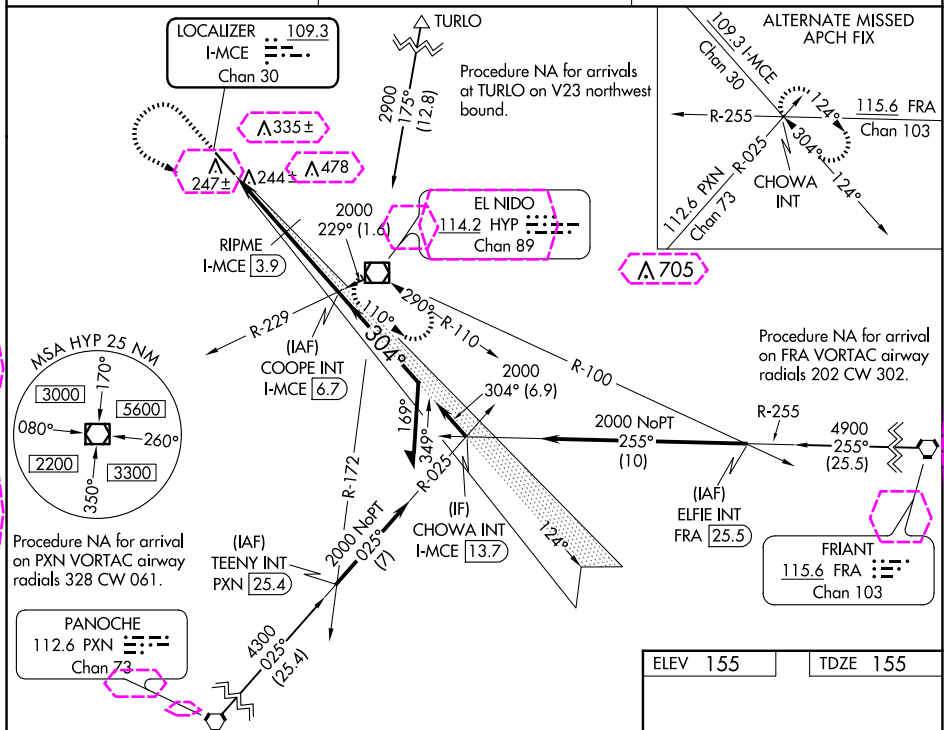
LOC/DME I-MCE <b>109.3</b> Chan <b>30</b>	APP CRS <b>304°</b>	Rwy Idg <b>5914</b> TDZE <b>155</b> Apt Elev <b>155</b>
---	------------------------	---

# ILS or LOC RWY 30

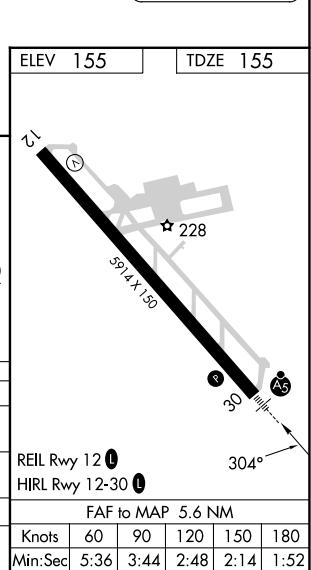
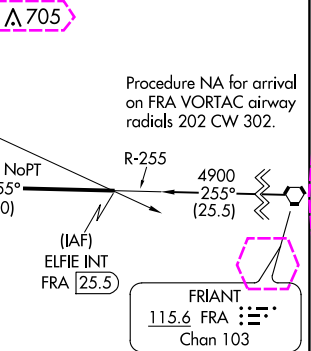
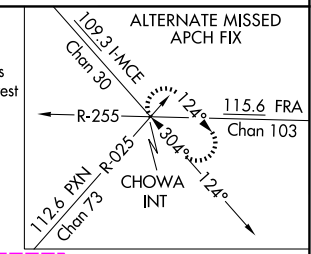
MERCED YOSEMITE RGNL (MCE)

<b>NA</b> For inop ALS, increase S-LOC visibility to 1 SM.	<b>MALSR</b> 	<b>MISSED APPROACH:</b> Climb to 1000 then climbing left turn to 2000 direct HYP VOR/DME and hold.
--	------------------	--

<b>ASOS</b> <b>132.175</b>	<b>NORCAL APP CON</b> <b>120.95 269.45</b>	<b>UNICOM</b> <b>122.7 (CTAF)</b>
-------------------------------	---	--------------------------------------



CATEGORY	A	B	C	D
S-ILS 30	355-½ 200 (200-½)			
S-LOC 30	640-¾ 485 (500-¾)		640-1 485 (500-1)	
RIPME FIX MINIMUMS				
S-LOC 30	500-¾ 345 (400-¾)			



MERCED, CALIFORNIA  
Amdt 15 15AUG19

37°17'N-120°31'W

MERCED YOSEMITE RGNL (MCE)  
ILS or LOC RWY 30

SW-2, 10 JUL 2025 to 07 AUG 2025

SW-2, 10 JUL 2025 to 07 AUG 2025

MERCED, CALIFORNIA

AL-665 (FAA)

25219

LOC/DME I-MCE <b>109.3</b> Chan 30	APP CRS <b>304°</b>	Rwy Ldg <b>5914</b> TDZE <b>155</b> Apt Elev <b>155</b>
--	------------------------	---

# ILS or LOC RWY 30

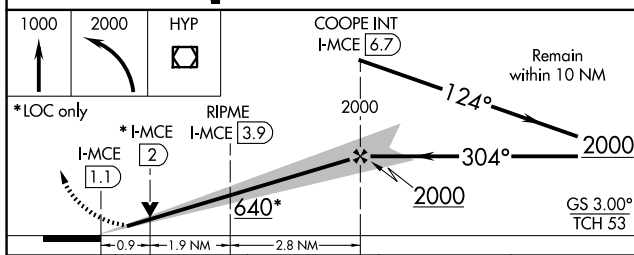
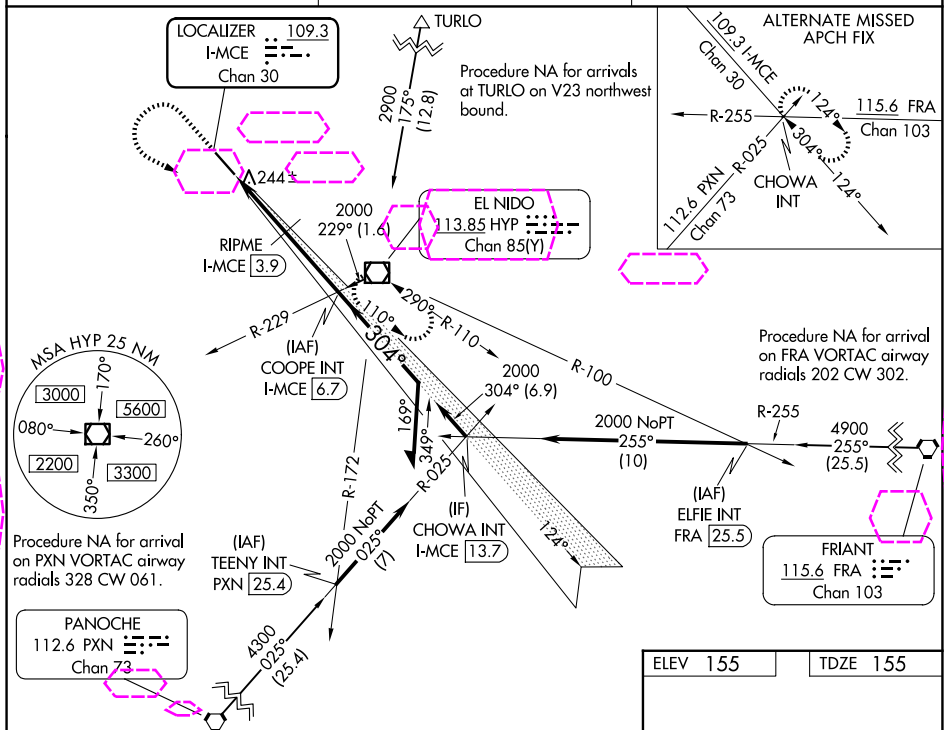
MERCED YOSEMITE RGNL (MCE)

**NA** For inop ALS, increase S-LOC visibility to 1 SM.

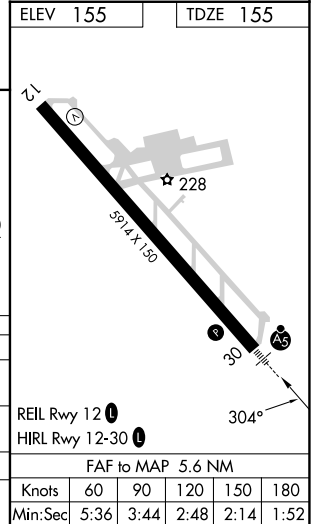
**MALS**

**MISSED APPROACH:** Climb to 1000 then climbing left turn to 2000 direct HYP VOR/DME and hold.

ASOS <b>132.175</b>	NORCAL APP CON <b>120.95 269.45</b>	UNICOM <b>122.7 (CTAF)</b>
------------------------	--	-------------------------------



CATEGORY	A	B	C	D
S-ILS 30	355-½ 200 (200-½)			
S-LOC 30	640-¾ 485 (500-¾)		640-1 485 (500-1)	
RIPME FIX MINIMUMS				
S-LOC 30	500-¾ 345 (400-¾)			



MERCED, CALIFORNIA  
Amdt 15 15AUG19

37°17'N-120°31'W

# MERCED YOSEMITE RGNL (MCE)

## ILS or LOC RWY 30

SW-2, 07 AUG 2025 to 04 SEP 2025

SW-2, 07 AUG 2025 to 04 SEP 2025