

LOGAN, UTAH

AL-663 (FAA)

25163

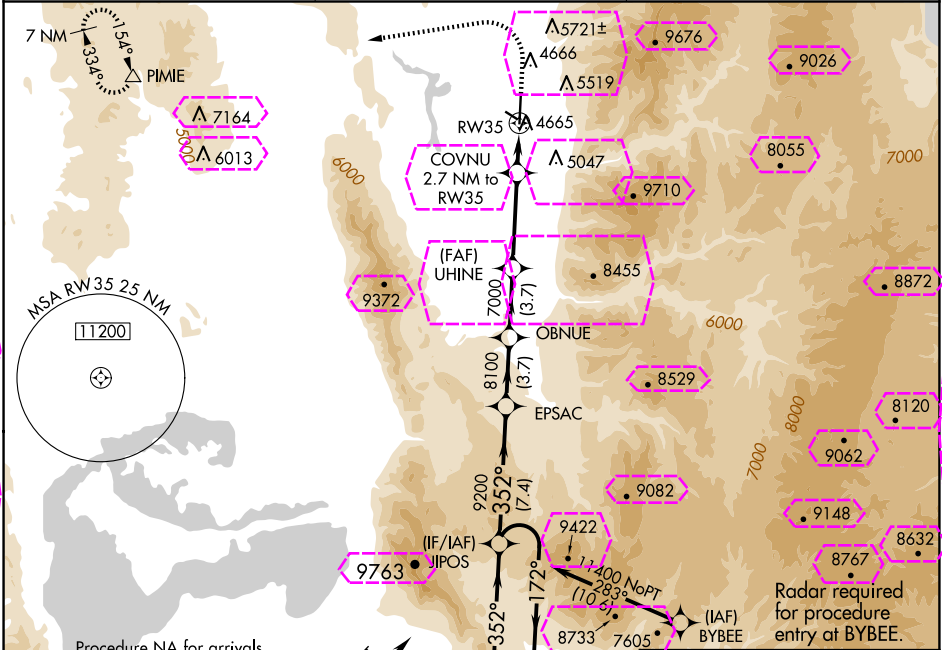
WAAS CH 57900 W35A	APP CRS 352°	Rwy Ldg 9020 TDZE 4457 Apt Elev 4457
--	------------------------	---

RNAV (GPS) RWY 35

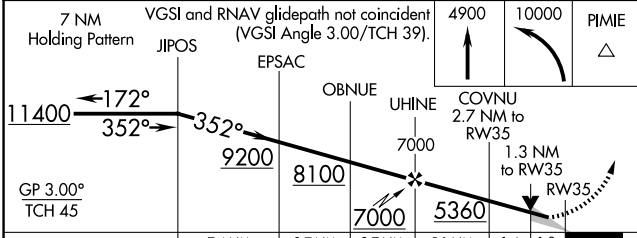
LOGAN-CACHE (L.G.U)

RNP APCH - GPS.	MISSED APPROACH: Climb to 4900 then climbing left turn to 10000 direct PIMIE and hold, continue climb-in-hold to 10000.
15°C Circling NA east of Rwy 17-35. Circling Rwy 10, 28 NA at night.	

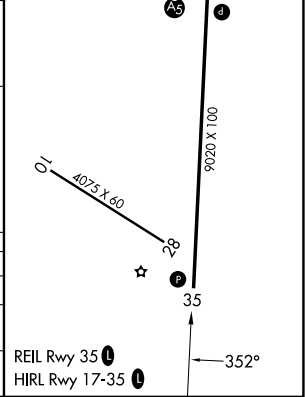
ASOS 135.275	SALT LAKE CENTER 127.7 354.125	UNICOM 122.8 (CTAF) 0
------------------------	--	---------------------------------



Procedure NA for arrivals on OGD VORTAC airway radials 302 CW 068°.	ELEV 4457	TDZE 4457
---	------------------	------------------



CATEGORY	A	B	C	D
LPV DA	4677-3/4 220 (300-3/4)			
LNAV MDA	4920-1	463 (500-1)	4920-1 3/8	463 (500-1 3/8)
CIRCLING	4920-1 463 (500-1)	4960-1 503 (600-1)	5080-1 3/4 623 (700-1 3/4)	5080-2 623 (700-2)



LOGAN, UTAH
Amdt 3A 22FEB24

41°48'N-111°51'W

RNAV (GPS) RWY 35

LOGAN, UTAH

AL-663 (FAA)

25219

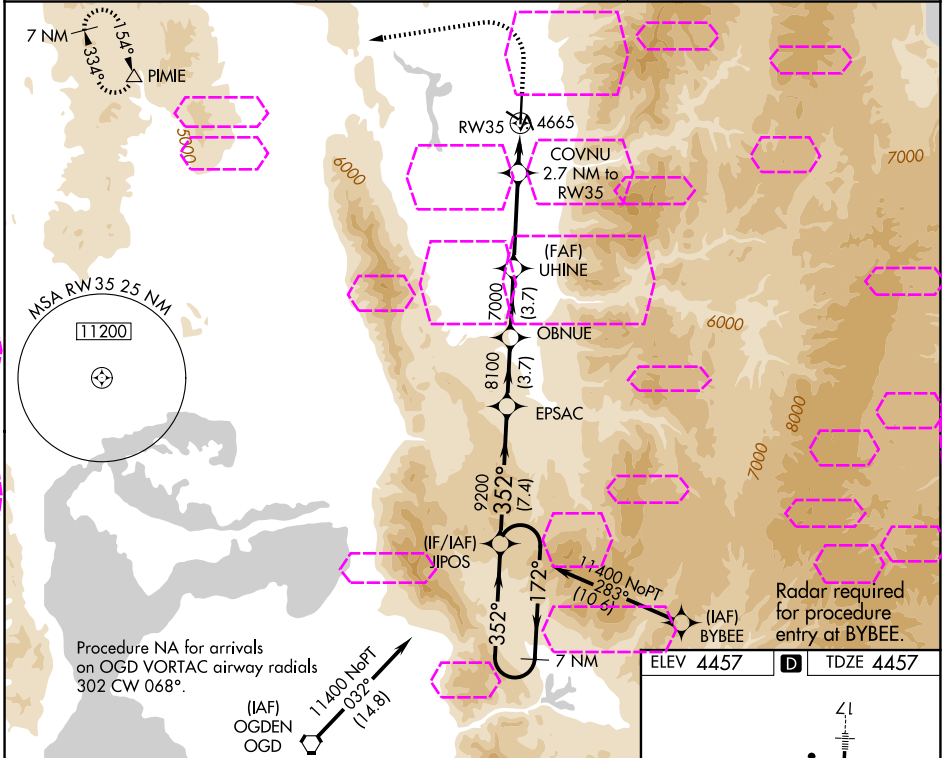
WAAS CH 57900 W35A	APP CRS 352°	Rwy Ldg 9020 TDZE 4457 Apt Elev 4457
--	------------------------	---

RNAV (GPS) RWY 35

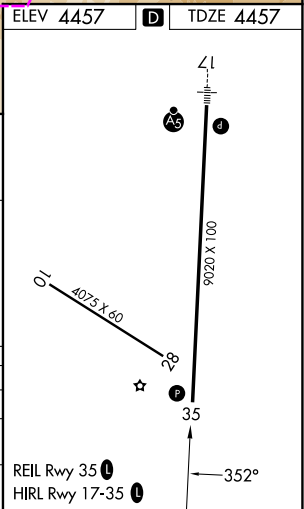
LOGAN-CACHE (L.G.U)

RNP APCH - GPS.	MISSED APPROACH: Climb to 4900 then climbing left turn to 10000 direct PIMIE and hold, continue climb-in-hold to 10000.
14°	Circling NA east of Rwy 17-35. Circling Rwy 10, 28 NA at night.

ASOS 135.275	SALT LAKE CENTER 127.7 354.125	UNICOM 122.8 (CTAF)
------------------------	--	-------------------------------



7 NM Holding Pattern		VGSI and RNAV glidepath not coincident (VGSI Angle 3.00/TCH 39).		4900	10000	PIMIE
JIPOS		EPSAC	OBNU	UHINE	COVNU 2.7 NM to RW35	
11400		352°	352°	9200	8100	7000
GP 3.00° TCH 45		7.4 NM	3.7 NM	3.7 NM	5.1 NM	1.4
						1.3
CATEGORY	A	B	C	D		
LPV DA	4677-¾		220 (300-¾)			
LNAV MDA	4920-1	463 (500-1)	4920-1⅓	463 (500-1⅓)		
CIRCLING	4920-1	4960-1	5080-1¼	5080-2		
	463 (500-1)	503 (600-1)	623 (700-1¼)	623 (700-2)		



LOGAN, UTAH

Amdt 3A 22FEB24

41°48'N-111°51'W

LOGAN-CACHE (L.G.U)

RNAV (GPS) RWY 35