




| | | |
|-------------|----------|-------------|
| APP CRS | Rwy Ldg | 9020 |
| 172° | TDZE | 4457 |
| | Apt Elev | 4457 |

RNAV (GPS) RWY 17
LOGAN-CACHE (LGU)

LOGAN-CACHE (LGU)

 DME/DME RNP-0.3 NA. Circling NA east of Rwy 17-35.
 Night Landing: Rwy 10-28 NA.
 -15°C Inop table does not apply to LNAV Cats C/D.
 *Missed approach requires minimum climb of 310 feet per NM to 7700.

MALSR

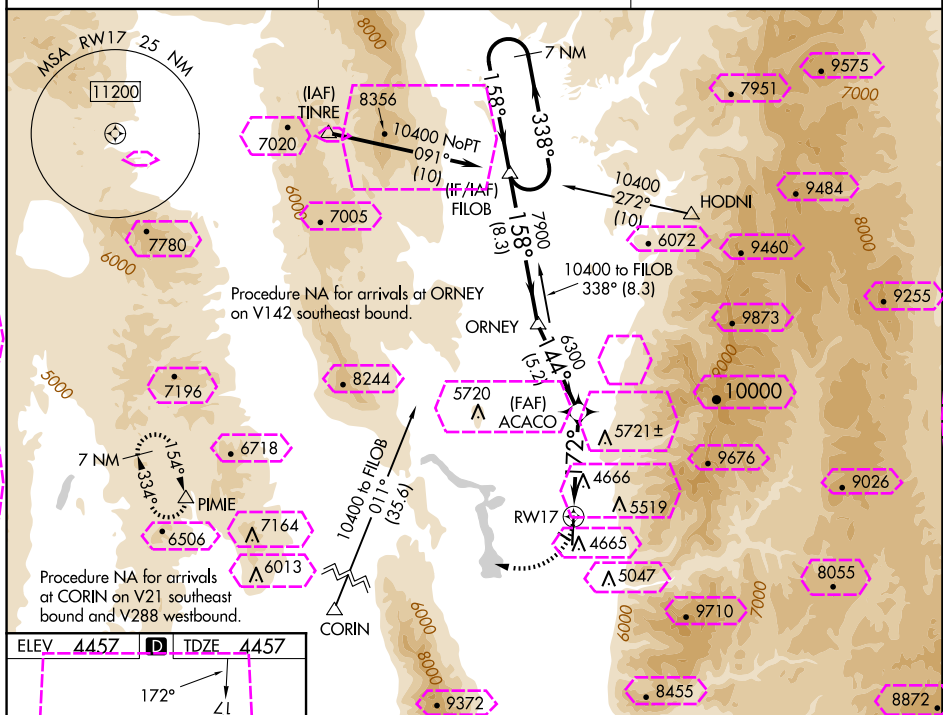


MISSED APPROACH:
Climbing right turn to 10000
direct PIME and hold, continue
climb-in-hold to 10000.

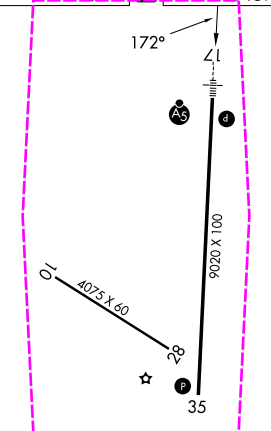
ASOS
135.275

SALT LAKE CENTER
127.7 354.125

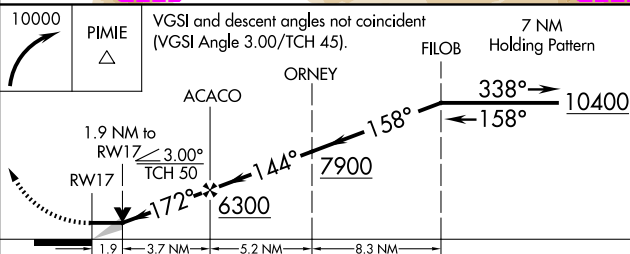
UNICOM
122.8 (CTAF) 




| | | | | |
|------|------|----------|------|------|
| ELEV | 4457 | D | TDZE | 4457 |
|------|------|----------|------|------|



REIL Rwy 35 **L**
HIRL Rwy 17-35 **L**



| CATEGORY | A | B | C | D |
|--|---------------------------------|---------------------------------|------------|-----------------|
| *LNAV MDA | 5100-1/2 | 643 (700-1/2) | 5100-1 3/8 | 643 (700-1 3/8) |
| LNAV MDA | 5800-3/4 1343 (1400-3/4) | 5800-1 1343 (1400-1) | 5800-3 | 1343 (1400-3) |
|  CIRCLING | 5800-1 1/4 1343 (1400-1 1/4) | 5800-1 1/2 1343 (1400-1 1/2) | 5800-3 | 1343 (1400-3) |

LOGAN, UTAH
Amdt 2 31MAR16

41°48'N-111°51'W

LOGAN-CACHE (LGU)

RNAV (GPS) RWY 17

LOGAN, UTAH

AL-663 (FAA)

25219

| | | |
|---------|----------|------|
| APP CRS | Rwy Ldg | 9020 |
| 172° | TDZE | 4457 |
| | Apt Elev | 4457 |

RNAV (GPS) RWY 17

LOGAN-CACHE (LGU)

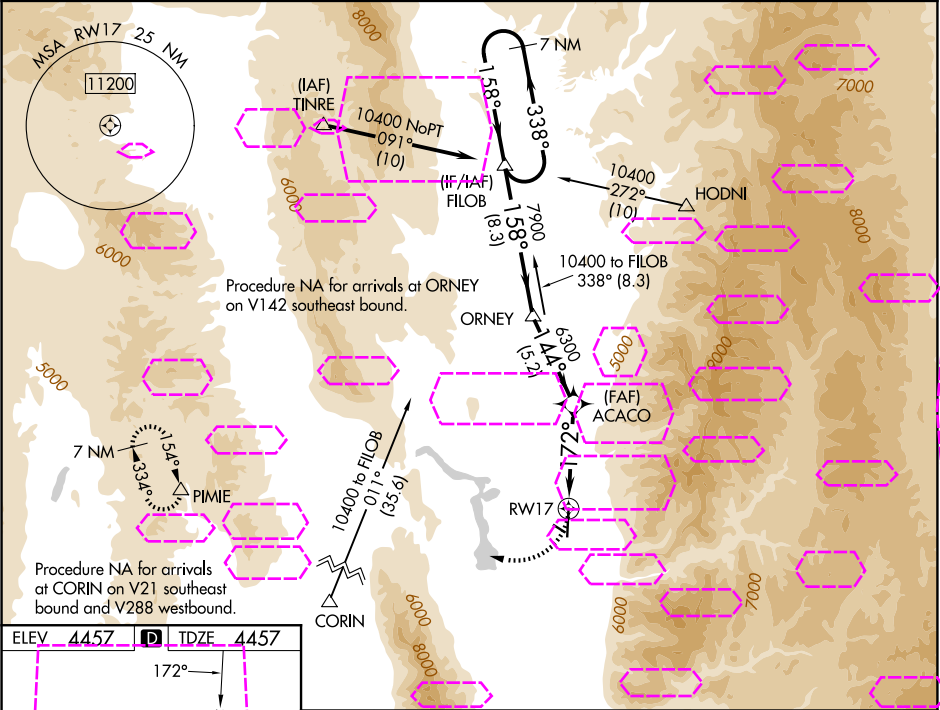
7
A
33 **14** **°C**

DME/DME RNP-0.3 NA. Circling NA east of Rwy 17-35.
Night Landing: Rwy 10-28 NA.
Inop table does not apply to LNAV Cats C/D.
*Missed approach requires minimum climb of 310 feet per NM to 7700.

MALSR

MISSED APPROACH:
Climbing right turn to 10000
direct PIMIE and hold, continue
climb-in-hold to 10000.

| | | |
|-----------------|-----------------------------------|---------------------------------|
| ASOS 135.275 | SALT LAKE CENTER 127.7 354.125 | UNICOM 122.8 (CTAF) 0 |
|-----------------|-----------------------------------|---------------------------------|



10000

PIMIE

VGSI and descent angles not coincident (VGSI Angle 3.00/TCH 45).

7 NM Holding Pattern

FILOB

ORNEY

ACACO

1.9 NM to RW17 3.00° TCH 50

RW17

172°

6300

7900

144°

158°

338°

10400

158°

1.9

3.7 NM

5.2 NM

8.3 NM

| CATEGORY | A | B | C | D |
|-----------|---------------------------------|---------------------------------|------------|-----------------|
| *LNAV MDA | 5100-1/2 | 643 (700-1/2) | 5100-1 3/8 | 643 (700-1 3/8) |
| LNAV MDA | 5800-3/4 1343 (1400-3/4) | 5800-1 1343 (1400-1) | 5800-3 | 1343 (1400-3) |
| CIRCLING | 5800-1 1/4 1343 (1400-1 1/4) | 5800-1 1/2 1343 (1400-1 1/2) | 5800-3 | 1343 (1400-3) |