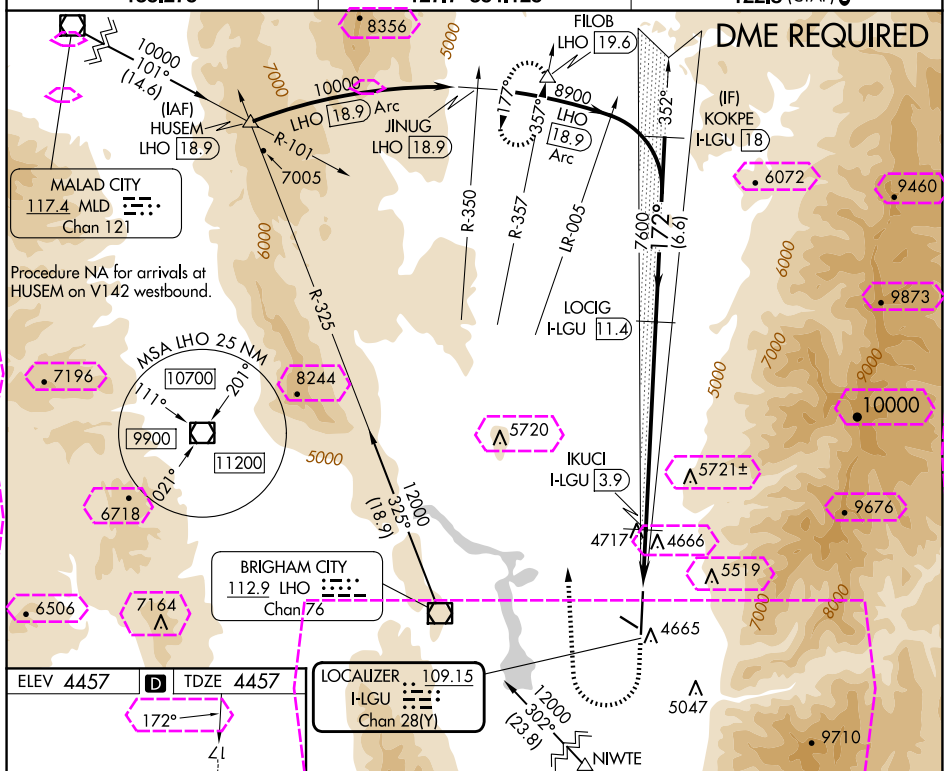


ILS or LOC/DME RWY 17  
LOGAN-CACHE (LGU)

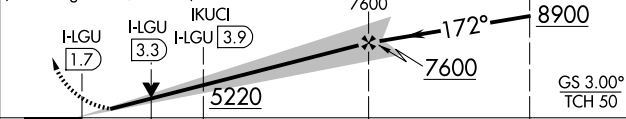
**MISSED APPROACH:** Climb to 5800 then climbing right turn to 12000 on heading 345° and on LHO VOR/DME R-357 to FILOB INT/LHO 19.6 DME and hold, continue climb-in-hold to 12000.

UNICOM  
122.8 (CTAF) 

LOCALIZER 109.15  
I-LGU  
Chan 28(Y)

5800	12000	LHO	FILOB	Use I-LGU DME when on localizer course.
------	-------	-----	-------	---

VGSI and ILS glidepath not coincident  
(VGSI Angle 3.00/TCH 45).



S-ILS 17	4771- $\frac{3}{4}$	314 (400- $\frac{3}{4}$ )
----------	---------------------	---------------------------

S-LOC 17	5020- $\frac{3}{4}$ 563 (600- $\frac{3}{4}$ )	5020- $1\frac{1}{4}$ 563 (600- $1\frac{1}{4}$ )
----------	---	---

	5020-1	563 (600-1)	5080-1 $\frac{3}{4}$ 623 (700-1 $\frac{3}{4}$ )	5080-2 623 (700-2)
--	--------	-------------	--	-----------------------

REIL Rwy 35 **L**  
HIRL Rwy 17-35 **L**

LOGAN, UTAH  
Amdt 1A 22FEB24

41°48'N-111°51'W




LOGAN-CACHE (LGU)

ILS or LOC/DME RWY 17

SW-4, 10 JUL 2025 to 07 AUG 2025

LOC/DME F-LGU <b>109.15</b> Chan <b>28</b> (Y)	APP CRS <b>172°</b>	Rwy Ldg <b>9020</b> TDZE <b>4457</b> Apt Elev <b>4457</b>
--	------------------------	---

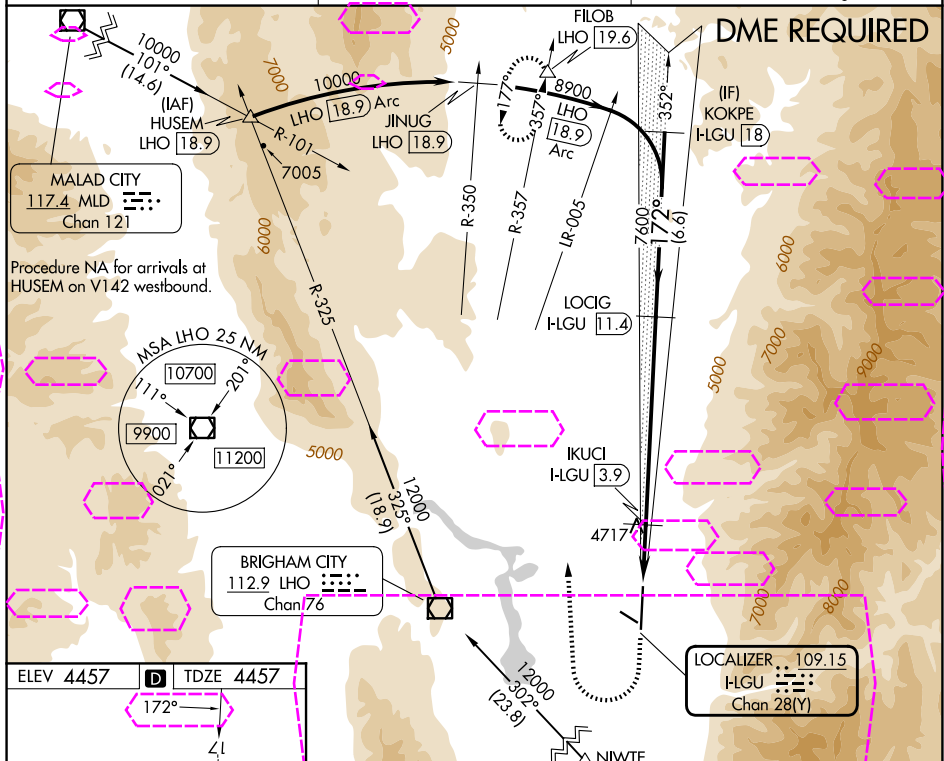
ILS or LOC/DME RWY 17  
LOGAN-CACHE (LGU)

	Circling NA east of Rwy 17-35.
	Circling Rwy 10, 28 NA at night.
	Rwy 17 helicopter visibility reduction below $\frac{3}{4}$ SM NA.

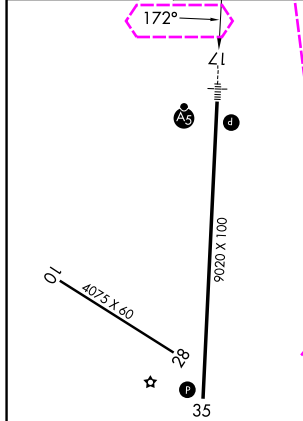
MALSR

**MISSED APPROACH:** Climb to 5800 then climbing right turn to 12000 on heading 345° and on LHO VOR/DME R-357 to FILOB INT/LHO 19.6 DME and hold, continue climb-in-hold to 12000.

ASOS	SALT LAKE CENTER	UNICOM
135.275	127.7 354.125	122.8 (CTAF) 0



ELEV 4457	<b>D</b>	TDZE 4457
-----------	----------	-----------



5800 ↑	12000 hdg 345°	IHO R-357	FILOB △	Use I-LGU DME when on localizer course.	LOCIG I-LGU 11.4	KOKPE I-LGU 18
VGS1 and ILS glidepath not coincident (VGS1 Angle 3.00/TCH 45).						
CATEGORY	A	B	C	D		
S-ILS 17	4771- <sup>3</sup> / <sub>4</sub>		314 (400- <sup>3</sup> / <sub>4</sub> )			
S-LOC 17	5020- <sup>3</sup> / <sub>4</sub> 563 (600- <sup>3</sup> / <sub>4</sub> )		5020-1 <sup>1</sup> / <sub>4</sub> 563 (600-1 <sup>1</sup> / <sub>4</sub> )			
CIRCLING	5020-1 563 (600-1)		5080-1 <sup>3</sup> / <sub>4</sub> 623 (700-1 <sup>3</sup> / <sub>4</sub> )		5080-2 623 (700-2)	