

LAS VEGAS, NEVADA

AL-662 (FAA)

25051

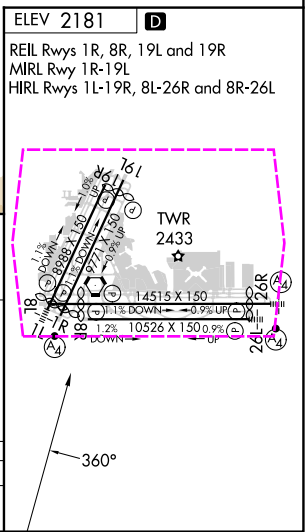
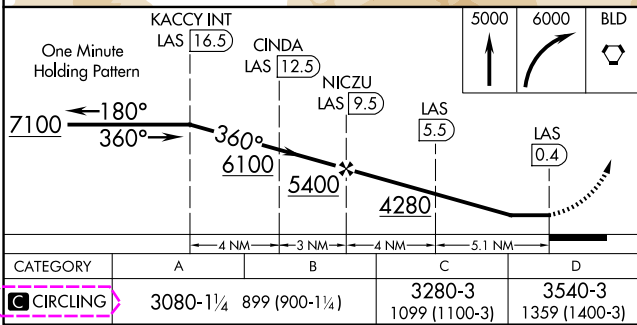
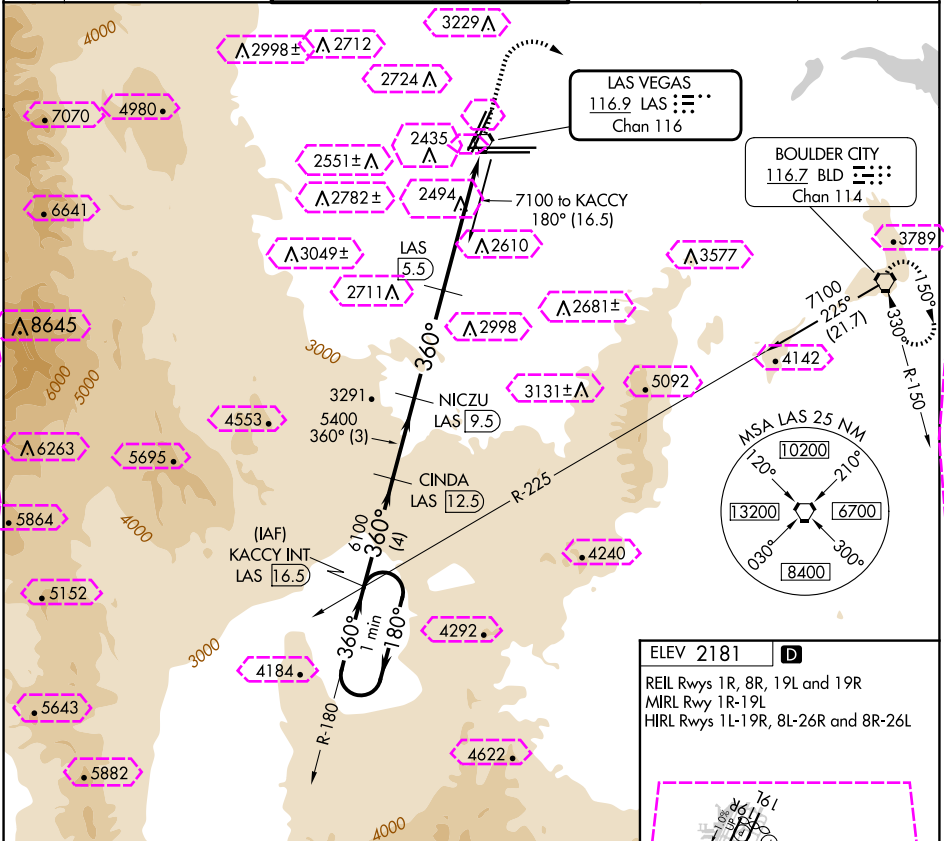
VORTAC LAS <b>116.9</b> Chan <b>116</b>	APP CRS <b>360°</b>	Rwy Idg TDZE Apt Elev	N/A N/A <b>2181</b>
---	------------------------	-----------------------------	---------------------------

# VOR/DME-A

HARRY REID INTL (LAS)

<b>V</b> <b>A</b>	MISSED APPROACH: Climb to 5000 then climbing right turn to 6000 direct BLD VORTAC and hold.			
----------------------	--	--	--	--

D-ATIS <b>132.4</b>	LAS VEGAS APP CON <b>125.025 379.15</b> (West) <b>119.775 282.2</b> (East)	LAS VEGAS TOWER <b>118.75 257.8</b> (Rwy 1L/19R, 1R/19L) <b>119.9 257.8</b> (Rwy 8L/26R, 8R/26L)	GND CON <b>121.1 270.8</b> E of 1R/19L <b>121.9 254.3</b> W of 1L/19R	CLNC DEL <b>118.0</b>	CPDLC
------------------------	--	--	---	--------------------------	-------



LAS VEGAS, NEVADA

AL-662 (FAA)

25219

VORTAC LAS <b>116.9</b> Chan 116	APP CRS <b>360°</b>	Rwy Ldg TDZE Apt Elev <b>N/A</b> <b>N/A</b> <b>2181</b>
--	------------------------	--

# VOR/DME-A

HARRY REID INTL (LAS)

<b>V</b> <b>A</b>	MISSED APPROACH: Climb to 5000 then climbing right turn to 6000 direct BLD VORTAC and hold.			
----------------------	--	--	--	--

D-ATIS <b>132.4</b>	LAS VEGAS APP CON <b>125.025 379.15</b> (West) <b>119.775 282.2</b> (East)	LAS VEGAS TOWER <b>118.75 257.8</b> (Rwy 1L/19R, 1R/19L) <b>119.9 257.8</b> (Rwy 8L/26R, 8R/26L)	GND CON <b>121.1 270.8</b> E of 1R/19L <b>121.9 254.3</b> W of 1L/19R	CLNC DEL <b>118.0</b>	CPDLC
------------------------	--	--	---	--------------------------	-------

