

LAS VEGAS, NEVADA

AL-662 (FAA)

25051

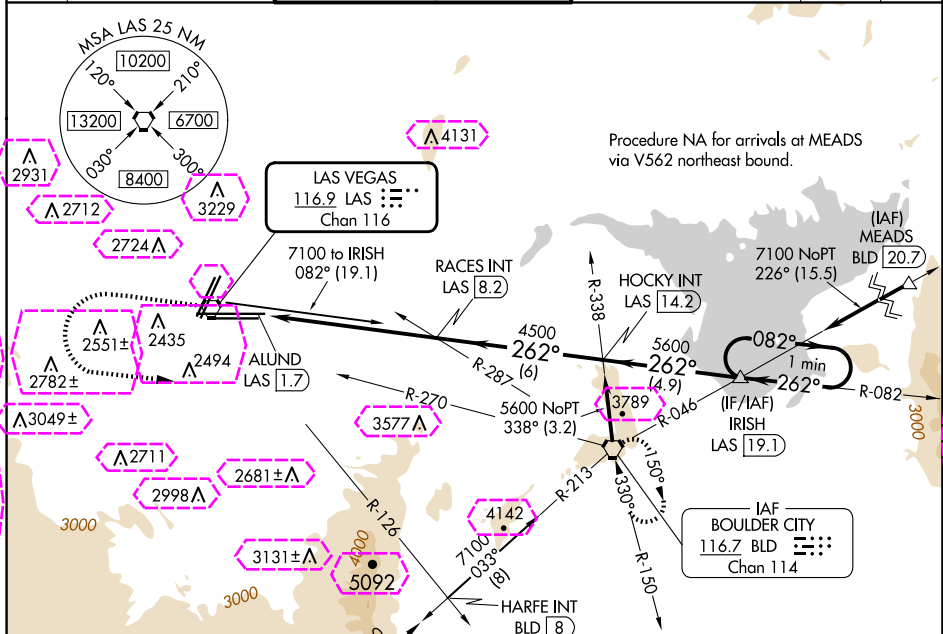
VORTAC LAS 116.9 Chan 116	APP CRS 262°	Rwy Idg TDZE Apt Elev	26L 10526 2069 2181	26R 12638 2067 2181
---	------------------------	-----------------------------	---	---

VOR RWY 26L/R

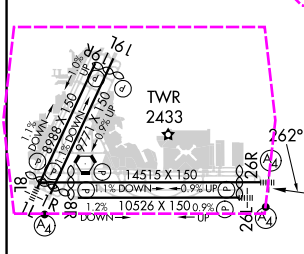
HARRY REID INTL (LAS)

V	For inop ALS, increase S-26L and S-26R Cat D visibility 1/4 SM.	MALSF Rwy 26L	MALS Rwy 26R	MISSED APPROACH: Climb to 4000 then climbing left turn to 6000 on heading 074° and BLD R-270 to BLD VORTAC and hold.

D-ATIS 132.4	LAS VEGAS APP CON 125.025 379.15 (West) 119.775 282.2 (East)	LAS VEGAS TOWER 118.75 257.8 (Rwy 1L/19R, 1R/19L) 119.9 257.8 (Rwy 8L/26R, 8R/26L)	GND CON 121.1 270.8 E of 1R/19L 121.9 254.3 W of 1L/19R	CLNC DEL 118.0	CPDLC
------------------------	--	--	---	--------------------------	-------



ELEV 2181	TDZE 26L 2069 TDZE 26R 2067
-----------	--------------------------------



REIL Rwy 1R, 8R, 19L and 19R MIRL Rwy 1R-19L HIRL Rwy 1L-19R, 8L-26R and 8R-26L FAF to MAP 6.5 NM					
Knots	60	90	120	150	180
Min:Sec	6:30	4:20	3:15	2:36	2:10

CATEGORY	A	B	C	D
	2720-3/4 651 (600-3/4)	2720-1 1/8 653 (600-1 1/8)	2720-1 1/8 653 (600-1 1/8)	2720-1 1/8 653 (600-1 1/8)
S-26L	2720-3/4 651 (600-3/4)	2720-1 1/8 653 (600-1 1/8)	2720-1 1/8 653 (600-1 1/8)	2720-1 1/8 653 (600-1 1/8)
S-26R	2720-3/4 653 (600-3/4)	2720-1 1/8 653 (600-1 1/8)	2720-1 1/8 653 (600-1 1/8)	2720-1 1/8 653 (600-1 1/8)
CIRCLING	3020-1 1/4 839 (900-1 1/4)	3060-1 1/4 879 (900-1 1/4)	3100-2 3/4 919 (1000-2 3/4)	3540-3 1359 (1400-3)

LAS VEGAS, NEVADA
Amdt 4B 11AUG22

36°05'N-115°09'W

HARRY REID INTL (LAS)

VOR RWY 26L/R

AL-662 (FAA)

25219

VORTAC LAS <u>116.9</u> Chan 116	APP CRS 262°	Rwy Ldg TDZE Apt Elev	26L 10526 2069 2181	26R 12638 2067 2181
--	-----------------	-----------------------------	---	---

VOR RWY 26L/R
HARRY REID INTL (LAS)

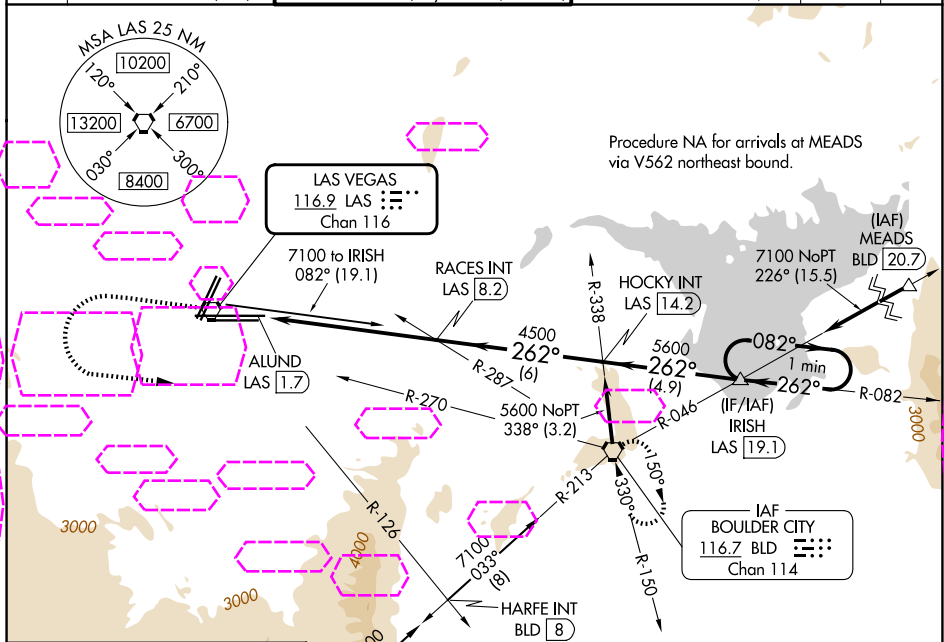
T
A For inop ALS, increase S-26L and S-26R Cat D visibility $\frac{1}{4}$ SM.

MALSF
Rwy 26L

MALS
Rwy 26R
(A₄) 

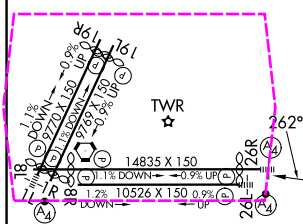
MISSED APPROACH: Climb to 4000 then climbing left turn to 6000 on heading 074° and BLD R-270 to BLD VORTAC and hold.

D-ATIS	LAS VEGAS APP CON	LAS VEGAS TOWER	GND CON	CLNC DEL	CPDLC
132.4	125.025 379.15 (West)	118.75 257.8 (Rwy 1L/19R, 1R/19L)	121.1 270.8 E of 1R/19L	118.0	
	119.775 282.2 (East)	119.9 257.8 (Rwy 8L/26R, 8R/26L)	121.9 254.3 W of 1L/19R		



ELEV 2181	D	TDZE 26L 2069 TDZE 26R 2067
-----------	----------	--------------------------------

Procedure NA for arrivals on BLD VORTAC
airway radials 332 CW 016.



REIL Rwys 1R, 8R, 19L and 19R MIRL Rwy 1R-19L HIRL Rwys 1L-19R, 8L-26R and 8R-26L	FAF to MAP 6.5 NM
---	-------------------

Knots	60	90	120	150	180
Min:Sec	6:30	4:20	3:15	2:36	2:10

LAS VEGAS, NEVADA
Amdt 4B 11AUG22

4000

↑

6000

hdg 074°

BLD

R-270

BLD

HOCKY INT LAS 14.2

IRISH INT LAS 19.1

One Minute Holding Pattern

RACES INT LAS 8.2

ALUND LAS 1.7

4500

5600

082° →

← 262°

7100

6.5 NM

6 NM

4.9 NM

CATEGORY	A	B	C	D
S-26L	2720-¾ 651 (600-¾)		2720-1⅝ 651 (600-1⅝)	
S-26R	2720-¾ 653 (600-¾)		2720-1⅝ 653 (600-1⅝)	
CIRCLING	3020-1¼ 839 (900-1¼)	3060-1¼ 879 (900-1¼)	3100-2¾ 919 (1000-2¾)	3540-3 1359 (1400-3)

36°05'N-115°09'W

HARRY REID INTL (LAS)
VOR RWY 26L/R