

LAS VEGAS, NEVADA

AL-662 (FAA)

25051

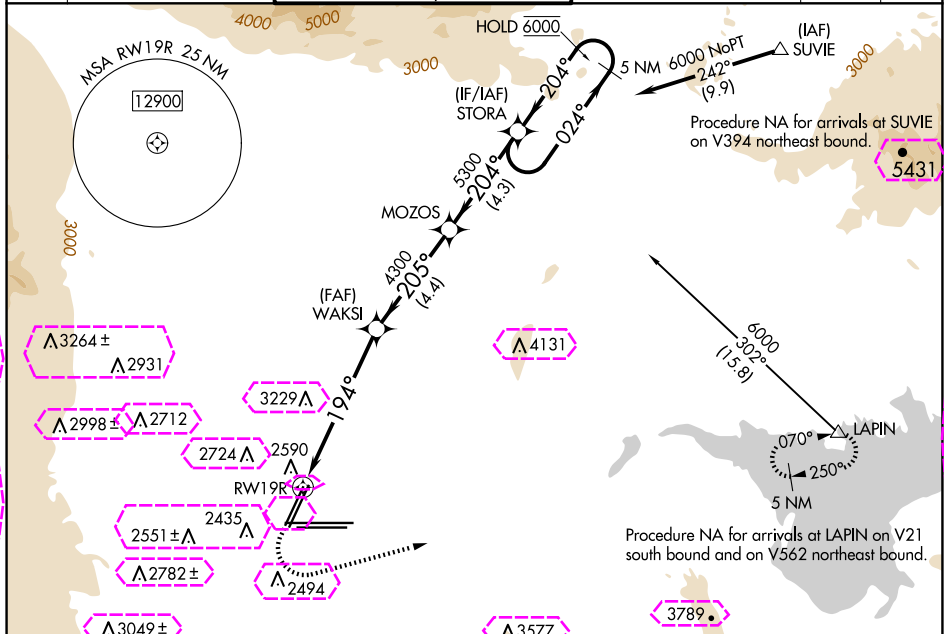
WAAS CH 50142 W19B	APP CRS 194°	Rwy Idg TDZE 2117 Apt Elev 2181	8417 2117 2181
--	------------------------	---	---

RNAV (GPS) Y RWY 19R

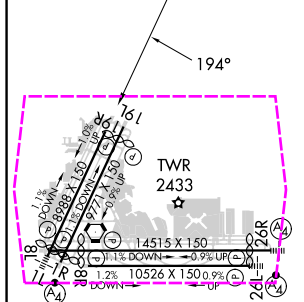
HARRY REID INTL (LAS)

RNP APCH-GPS.		MISSED APPROACH: Climb to 2600 then climbing left turn to 6000 direct LAPIN and hold.	
Rwy 19R helicopter visibility reduction below ¾ SM NA. For uncompensated Baro-VNAV systems, LNAV/VNAV NA below 0°C or above 54°C.			

D-ATIS 132.4	LAS VEGAS APP CON 125.025 379.15 (West) 119.775 282.2 (East)	LAS VEGAS TOWER 118.75 257.8 (Rwy 1L/19R, 1R/19L) 119.9 257.8 (Rwy 8L/26R, 8R/26L)	GND CON 121.1 270.8 E of 1R/19L 121.9 254.3 W of 1L/19R	CLNC DEL 118.0	CPDLC
------------------------	--	--	---	--------------------------	-------



ELEV 2181	D	TDZE 2117
------------------	----------	------------------



2600 ↑		6000 ↖		LAPIN △		VGSI and RNAV glidepath not coincident (VGSI Angle 3.04/TCH 80).			
						STORA		5 NM Holding Pattern	
		1.8 NM to RW19R		WAKSI 4300		MOZOS 5300		024° → ← 204° 6000	
↘ RW19R		194°		205°		204°		GP 3.24° TCH 60	
1.8 NM		4.5 NM		4.4 NM		4.3 NM			
CATEGORY		A		B		C		D	
LPV DA				2367-1		250 (200-1)			
LNAV/ VNAV DA				2743-1¾		626 (600-1¾)			
LNAV MDA		2840-1		723 (700-1)		2840-2		723 (700-2)	
CIRCLING		3020-1¼ 839 (900-1¼)		3060-1¼ 879 (900-1¼)		3100-2¾ 919 (1000-2¾)		3540-3 1359 (1400-3)	

MIRL Rwy 1R-19L
REIL Rwy 1R, 8R, 19L and 19R
HIRL Rwy 1L-19R, 8L-26R and 8R-26L

LAS VEGAS, NEVADA
Amdt 3B 20FEB25

36°05'N-115°09'W

RNAV (GPS) Y RWY 19R

LAS VEGAS, NEVADA

AL-662 (FAA)

25219

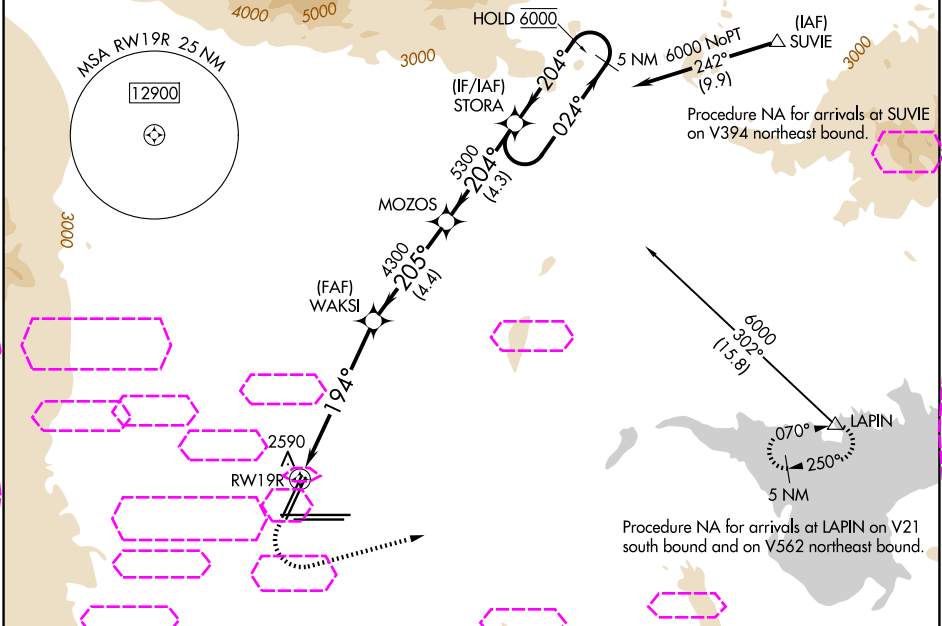
WAAS CH 50142 W19B	APP CRS 194°	Rwy Ldg TDZE Apt Elev	8416 2117 2181
--	------------------------	-----------------------------	---

RNAV (GPS) Y RWY 19R

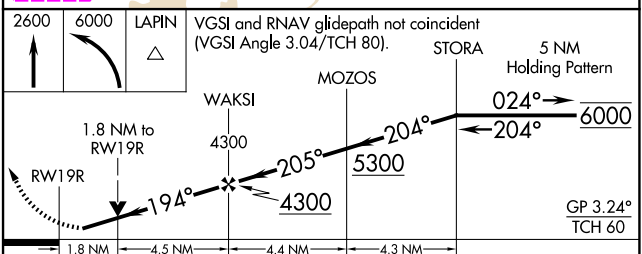
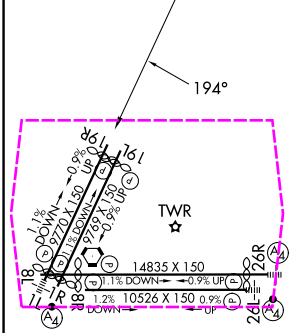
HARRY REID INTL (LAS)

RNP APCH-GPS.		MISSED APPROACH: Climb to 2600 then climbing left turn to 6000 direct LAPIN and hold.	
Rwy 19R helicopter visibility reduction below 3/4 SM NA. For uncompensated Baro-VNAV systems, LNAV/VNAV NA below 0°C or above 54°C.			

D-ATIS 132.4	LAS VEGAS APP CON 125.025 379.15 (West) 119.775 282.2 (East)	LAS VEGAS TOWER 118.75 257.8 (Rwy 1L/19R, 1R/19L) 119.9 257.8 (Rwy 8L/26R, 8R/26L)	GND CON 121.1 270.8 E of 1R/19L 121.9 254.3 W of 1L/19R	CLNC DEL 118.0	CPDLC
------------------------	--	--	---	--------------------------	-------



ELEV 2181	TDZE 2117
------------------	------------------



CATEGORY	A	B	C	D
LPV DA	2367-1		250 (200-1)	
LNAV/VNAV DA	2743-1 3/4		626 (600-1 3/4)	
LNAV MDA	2840-1 723 (700-1)		2840-2 723 (700-2)	
CIRCLING	3020-1 1/4 839 (900-1 1/4)	3060-1 1/4 879 (900-1 1/4)	3100-2 3/4 919 (1000-2 3/4)	3540-3 1359 (1400-3)

LAS VEGAS, NEVADA
Amdt 3B 20FEB25

36°05'N-115°09'W

RNAV (GPS) Y RWY 19R

SW-4, 07 AUG 2025 to 04 SEP 2025

SW-4, 07 AUG 2025 to 04 SEP 2025