

RNAV (GPS) Y RWY 19L

SW-4, 10 JUL 2025 to 07 AUG 2025

LAS VEGAS, NEVADA

AL-662 (FAA)

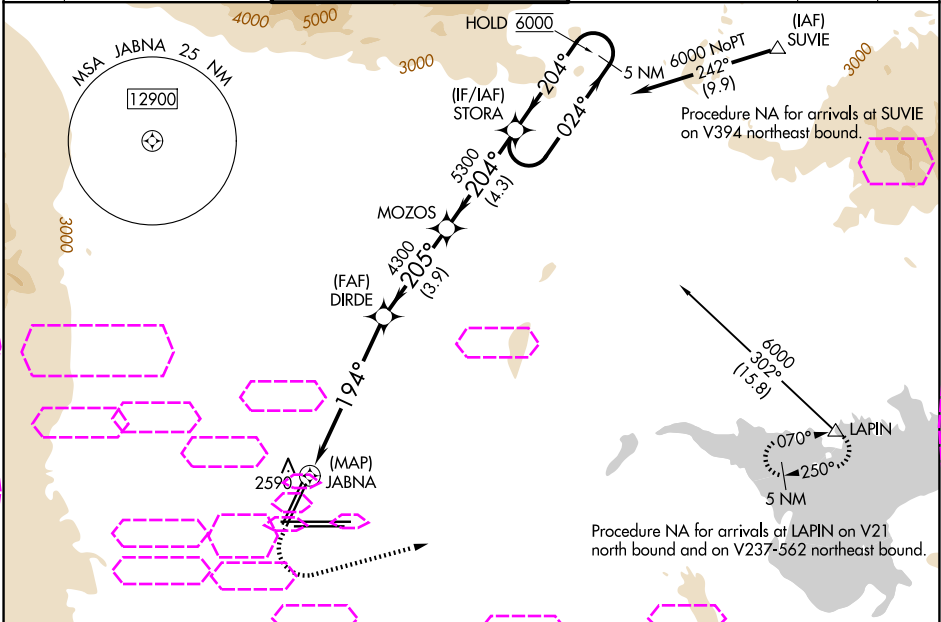
25219

WAAS CH <b>45542</b> <b>W19A</b>	APP CRS <b>194°</b>	Rwy Ldg TDZE Apt Elev	<b>8807</b> <b>2112</b> <b>2181</b>
--	------------------------	-----------------------------	---

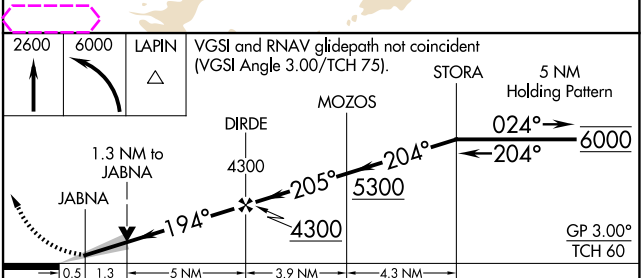
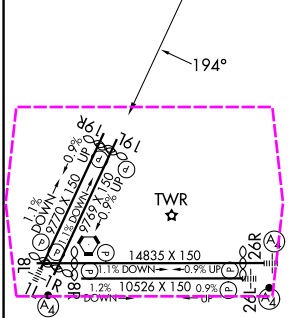
# RNAV (GPS) Y RWY 19L

HARRY REID INTL (LAS)

RNP APCH - GPS.			MISSED APPROACH: Climb to 2600 then climbing left turn to 6000 direct LAPIN and hold.		
▼ For uncompensated Baro-VNAV systems, LNAV/VNAV NA below 0°C or above 54°C. ▲					
D-ATIS 132.4	LAS VEGAS APP CON 125.025 379.15 (West) 119.775 282.2 (East)	LAS VEGAS TOWER 118.75 257.8 (Rwy 1L/19R, 1R/19L) 119.9 257.8 (Rwy 8L/26R, 8R/26L)	GND CON 121.1 270.8 E of 1R/19L 121.9 254.3 W of 1L/19R	CLNC DEL 118.0	CPDLC



ELEV 2181	<b>D</b>	TDZE 2112
-----------	----------	-----------



CATEGORY	A	B	C	D
LPV DA	2312-1	200 (200-1)		
LNAV/VNAV DA	2677-1½	565 (500-1½)		
LNAV MDA	2740-1	628 (600-1)	2740-1¾	628 (600-1¾)
CIRCLING	3020-1¼ 839 (900-1¼)	3060-1¼ 879 (900-1¼)	3100-2¾ 919 (1000-2¾)	3540-3 1359 (1400-3)

LAS VEGAS, NEVADA  
Amdt 3A 20FEB25

36°05'N-115°09'W

# RNAV (GPS) Y RWY 19L

SW-4, 07 AUG 2025 to 04 SEP 2025

SW-4, 07 AUG 2025 to 04 SEP 2025