

LAS VEGAS, NEVADA

AL-662 (FAA)

25051

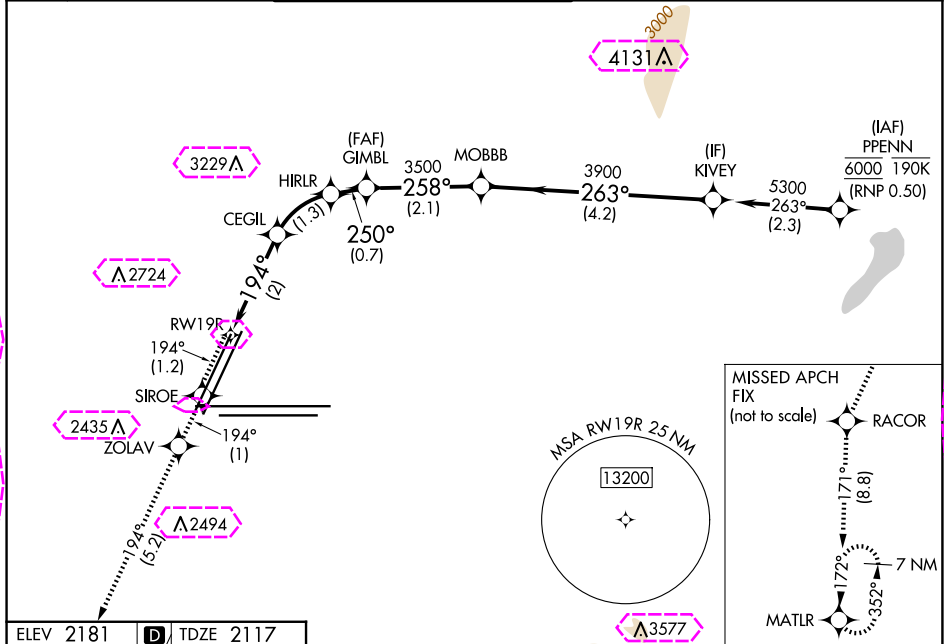
APP CRS	Rwy Idg	8417
194°	TDZE	2117
	Apt Elev	2181

# RNAV (RNP) Z RWY 19R

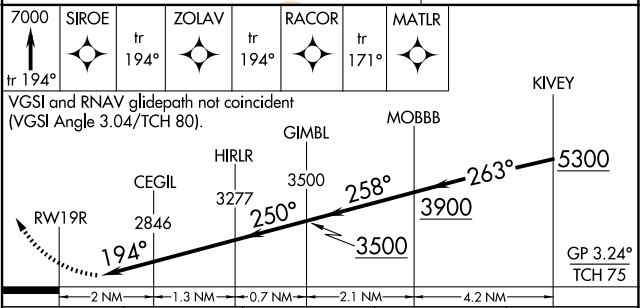
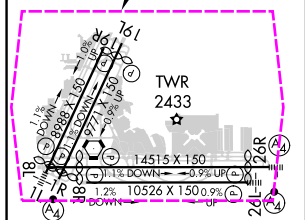
HARRY REID INTL (LAS)

RNP AR APCH - GPS, RF, min RNP 0.50. Authorization required. Missed approach requires RNP < 1.00.	MISSED APPROACH: Climb to 7000 on the RNAV missed approach route to MATLR and hold, continue climb-in-hold to 7000. * Missed approach requires minimum climb of 273 feet per NM to 2940. # Missed approach requires minimum climb of 235 feet per NM to 2960.
For uncompensated Baro-VNAV systems, procedure NA below 0°C or above 54°C.	

D-ATIS	LAS VEGAS APP CON	LAS VEGAS TOWER	GND CON	CLNC DEL	CPDLC
132.4	125.025 379.15 (West) 119.775 282.2 (East)	118.75 257.8 (Rwy 1L/19R, 1R/19L) 119.9 257.8 (Rwy 8L/26R, 8R/26L)	121.1 270.8 E of 1R/19L 121.9 254.3 W of 1L/19R	118.0	



ELEV 2181	TDZE 2117
-----------	-----------



CATEGORY	A	B	C	D
RNP 0.10 DA*	2558-1 $\frac{3}{8}$	441 (400-1 $\frac{3}{8}$ )		
RNP 0.20 DA#	2608-1 $\frac{3}{8}$	491 (500-1 $\frac{3}{8}$ )		
RNP 0.30 DA	2669-1 $\frac{3}{8}$	552 (500-1 $\frac{3}{8}$ )		

## AUTHORIZATION REQUIRED

LAS VEGAS, NEVADA  
Amdt 1 31OCT24

36°05'N-115°09'W  
HARRY REID INTL (LAS)  
RNAV (RNP) Z RWY 19R

LAS VEGAS, NEVADA

AL-662 (FAA)

25219

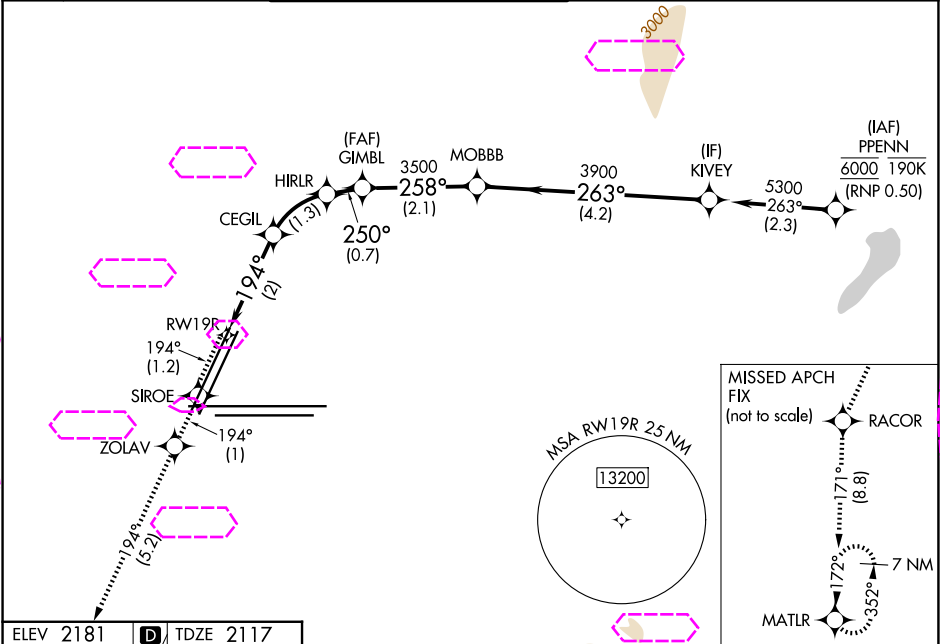
APP CRS	Rwy Ldg	8416
194°	TDZE	2117
	Apt Elev	2181

# RNAV (RNP) Z RWY 19R

HARRY REID INTL (LAS)

RNP AR APCH - GPS, RF, min RNP 0.50. Authorization required. Missed approach requires RNP < 1.00.	MISSED APPROACH: Climb to 7000 on the RNAV missed approach route to MATLR and hold, continue climb-in-hold to 7000.
For uncompensated Baro-VNAV systems, procedure NA below 0°C or above 54°C.	* Missed approach requires minimum climb of 273 feet per NM to 2940. # Missed approach requires minimum climb of 235 feet per NM to 2960.

D-ATIS	LAS VEGAS APP CON	LAS VEGAS TOWER	GND CON	CLNC DEL	CPDLC
132.4	125.025 379.15 (West) 119.775 282.2 (East)	118.75 257.8 (Rwy 1L/19R, 1R/19L) 119.9 257.8 (Rwy 8L/26R, 8R/26L)	121.1 270.8 E of 1R/19L 121.9 254.3 W of 1L/19R	118.0	



ELEV 2181	TDZE 2117	7000	SIROE	ZOLAV	RACOR	MATLR	KIVEY
		tr 194°	tr 194°	tr 194°	tr 171°		
VGSI and RNAV glidepath not coincident (VGSI Angle 3.04/TCH 80).							
CATEGORY A B C D							
RNP 0.10 DA* 2558-1 3/8 441 (400-1 3/8)							
RNP 0.20 DA# 2608-1 3/8 491 (500-1 3/8)							
RNP 0.30 DA 2669-1 3/8 552 (500-1 3/8)							
AUTHORIZATION REQUIRED							