

APP CRS <b>194°</b>	Rwy Idg	<b>8808</b>
	TDZE	<b>2112</b>
	Apt Elev	<b>2181</b>

RNAV (RNP) Z RWY 19L  
HARRY REID INTL (LAS)

HARRY REID INTL (LAS)

RNP AR APCH-GPS, RF, min RNP 0.50. Authorization required.  
Missed approach requires RNP <1.00.

**MISSED APPROACH:** Climb to 7000 on the RNAV missed approach route to MATLR and hold, continue climb-in-hold to 7000.

**T** For uncompensated Baro-VNAV systems, procedure NA below 0°C or above 54°C.

\*Missed approach requires minimum climb of 208 feet per NM to 4880.

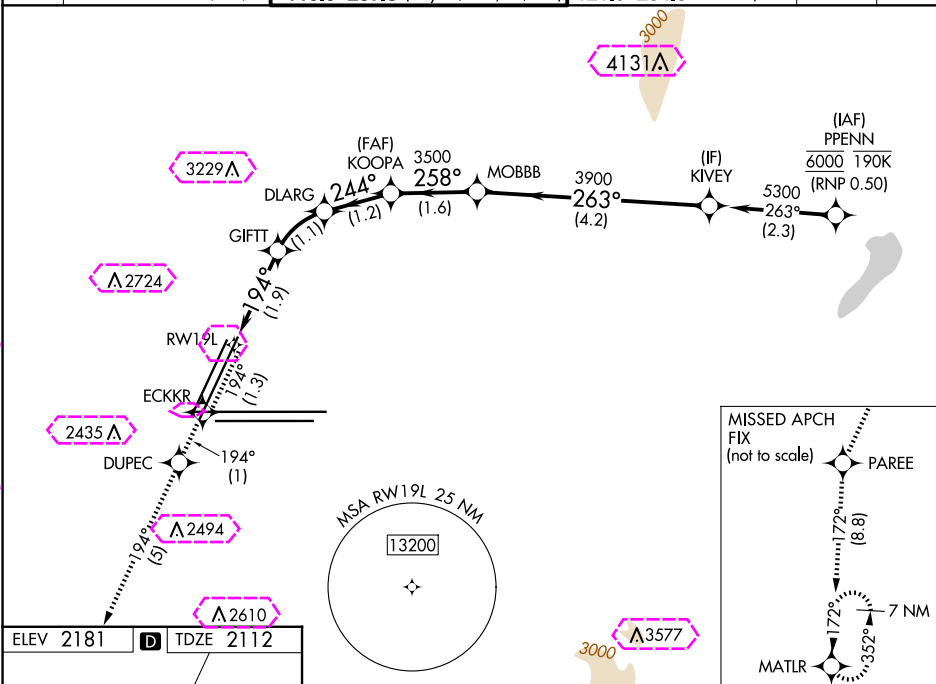
D-ATIS	LAS VEGAS APP CON	
<b>132.4</b>	<b>125.025</b>	<b>379.15 (West)</b>
	<b>119.775</b>	<b>282.2 (East)</b>

LAS VEGAS TOWER  
118.75 257.8 (Rwy 1L/19R, 1R/19L)  
119.9 257.8 (Rwy 8L/26R, 8R/26L)

	GND CON	
<b>121.1</b>	<b>270.8</b>	E of 1R/19L
<b>121.9</b>	<b>254.3</b>	W of 1L/19R

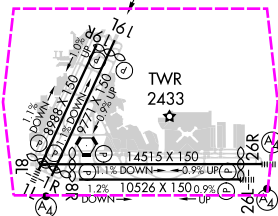
CLNC DE  
1120

CPDLC

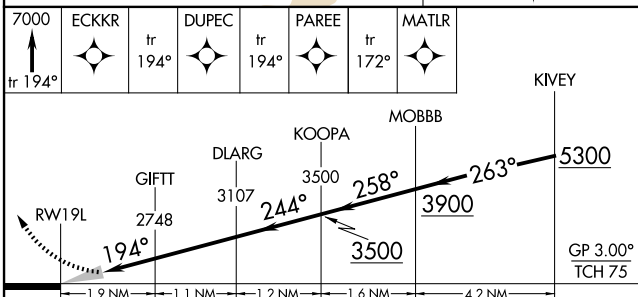


ELEV 2181		TDZE 2112
-----------	---	-----------

**P** TDZE 2112



MIRL Rwy 1R-19L  
REIL Rwys 1R, 8R, 19L and 19R  
HIRL Rwys 1L-19R, 8L-26R and 8R-26L



CATEGORY	A	B	C	D
RNP 0.10 DA*	2471-1 359 (300-1)			
RNP 0.30 DA	2559-1 $\frac{3}{8}$ 447 (400-1 $\frac{3}{8}$ )			

**AUTHORIZATION REQUIRED**

LAS VEGAS, NEVADA

Amdt 1 31OCT24

HARRY REID INTL (LAS)

36°05'N-115°09'W

RNAV (RNP) Z RWY 19L

RNAV (RNP) Z RWY 19L

SW-4, 07 AUG 2025 to 04 SEP 2025